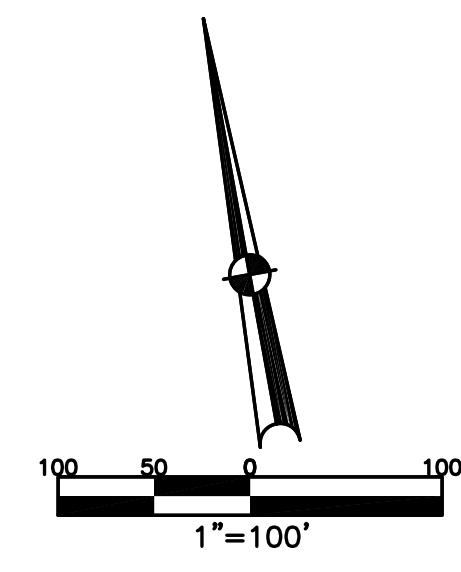


SECTION 13, TOWN 1, RANGE 11
SECTION 18, TOWN 1, RANGE 10

CITY OF TROY
MIAMI COUNTY, OHIO

PARCEL ID NUMBER
R50-_____

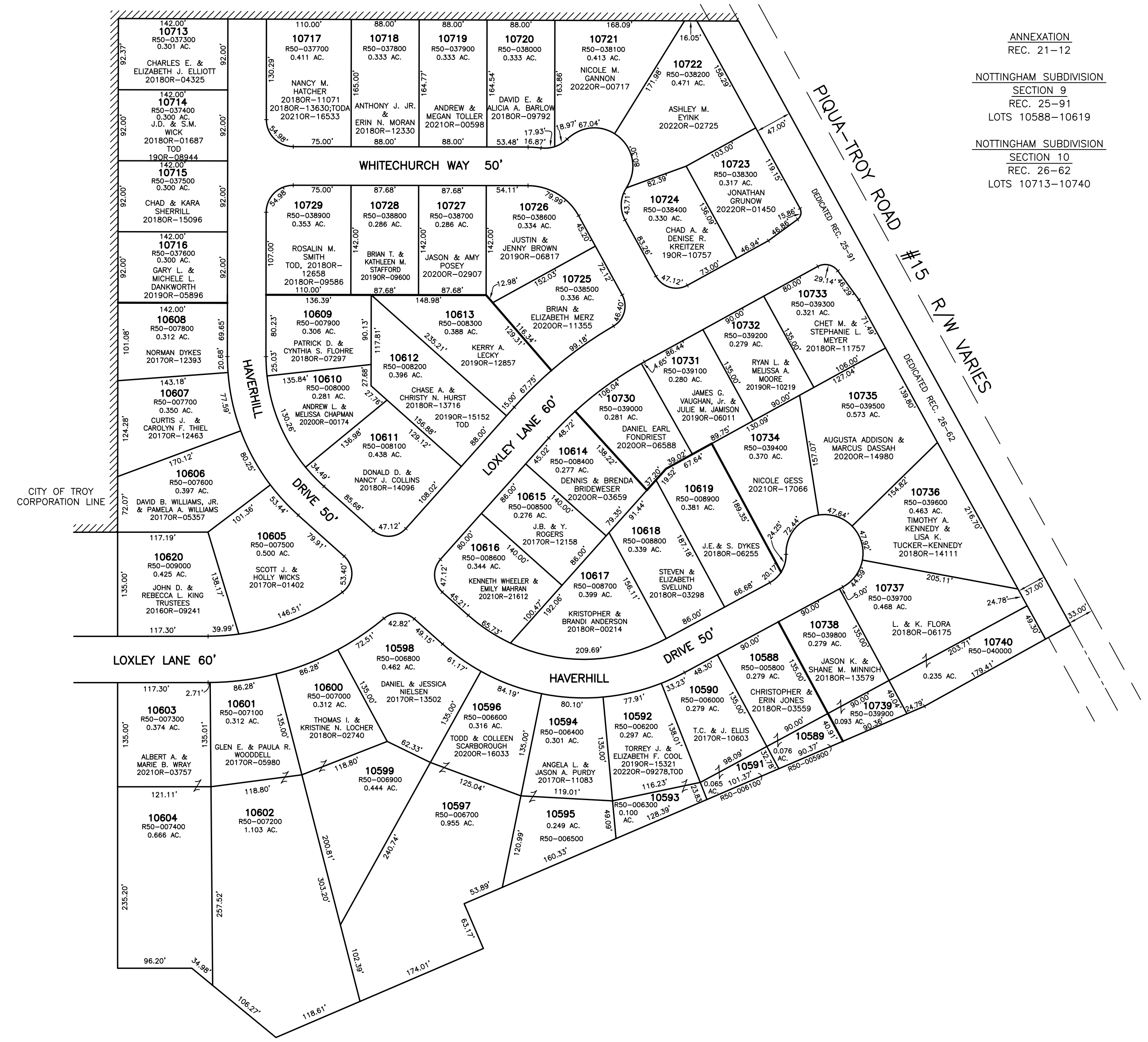
PLAT NW 114



ABBREVIATION LEGEND	
2014OR-07759	= RECORDER'S DOCUMENT NUMBER
OR 406-509	= OFFICIAL RECORD 406 PAGE 509
D.B. 677-326	= DEED BOOK 677, PAGE 326
REC. 18-87	= RECORDER'S PLAT BOOK 18, PAGE 87
LND. 56-145	= LAND SURVEY VOLUME 56, PAGE 145
LOT 24-200	= LOT SURVEY VOLUME 24, PAGE 200
R.R. 8-18	= ROAD RECORD VOLUME 8, PAGE 18
R/W	= RIGHT OF WAY
C	= CENTERLINE
AC.	= ACRES
TWP.	= TOWNSHIP
TR.	= TRACT
IL	= INLOT

LINE LEGEND	
	Blow-up Boundary
	Property Line
	Lot Split Line
	Section Line
	Centerline
	Right-of-Way Line
	Corporation Line

SURVEY INDEX	
LND. 56-155	REC. 21-12
LND. 57-16	REC. 25-91
	REC. 26-62



ANNEXATION
REC. 21-12

NOTTINGHAM SUBDIVISION
SECTION 9
REC. 25-91
LOTS 10588-10619

NOTTINGHAM SUBDIVISION
SECTION 10
REC. 26-62
LOTS 10713-10740