

CONCORD TWP.

MIAMI COUNTY, OHIO

PLAT 27

Section 27, Town 5, Range 6

SCALE: 1" = 400'

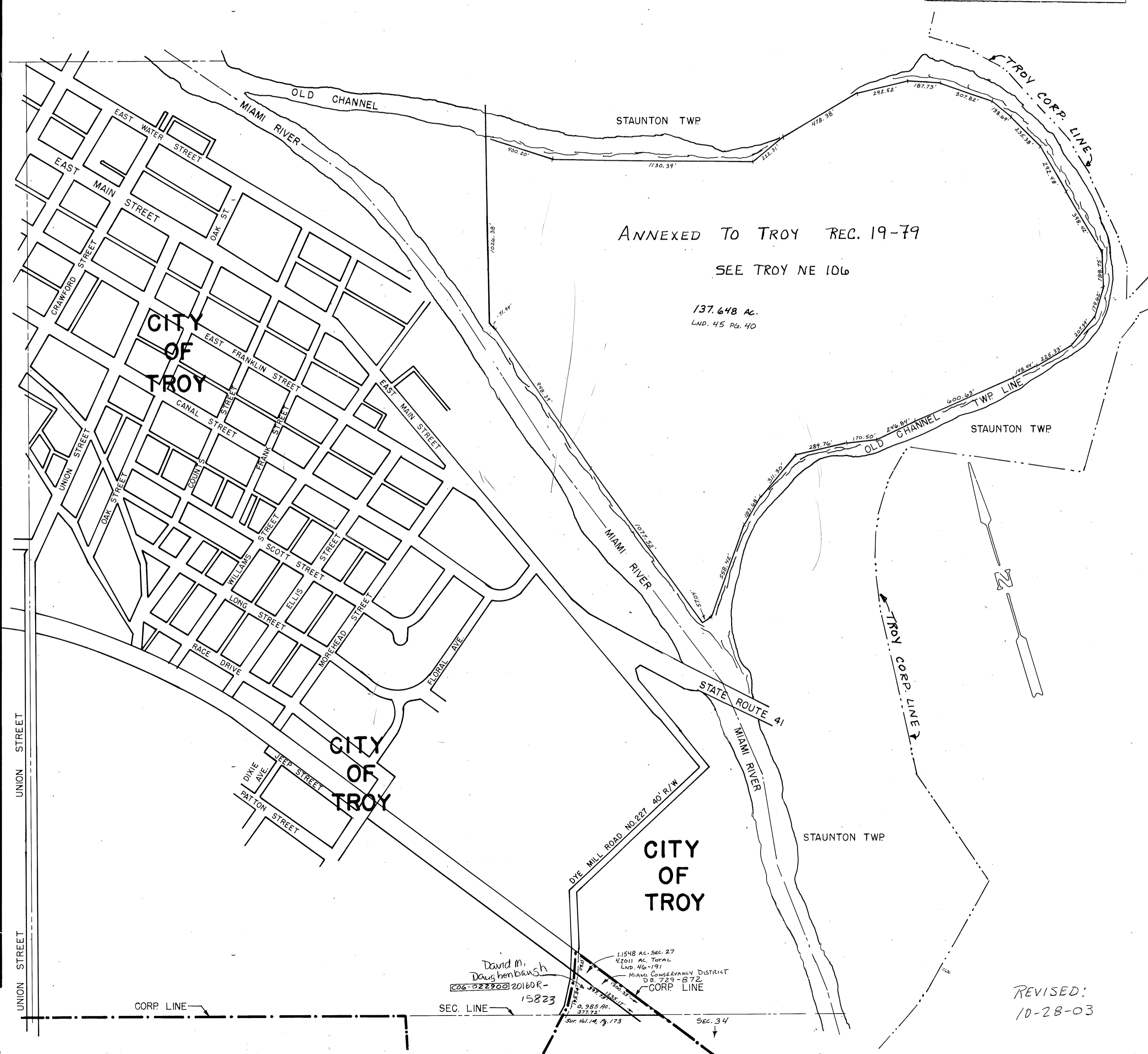
SMDA NUMBER
C06-CC027

SURVEYS

- LAND VOL. 1, PG. 59 WHOLE SECTION
- LAND VOL. 2, PG. 97 CEN. SOUTHEAST
- LAND VOL. 3, PG. 77 CEN. PT. NORTHEAST
- LAND VOL. 3, PG. 473 CEN. PT. SECTION
- LAND VOL. 4, PG. 201 TROY
- LAND VOL. 4, PG. 359 CEN. SOUTHEAST
- LAND VOL. 5, PG. 58 EAST TROY
- LAND VOL. 5, PG. 156 EAST TROY
- LAND VOL. 6, PG. 41 N.W. PT. SOUTHEAST
- LAND VOL. 7, PG. 6 WEST/SOUTH PT. SOUTHEAST
- LAND VOL. 8, PG. 153 N.W. PT. SOUTHEAST
- LAND VOL. 8, PG. 154 N.W. PT. SOUTHEAST
- LAND VOL. 5, PG. 3 TROY
- LAND VOL. 10, PG. 100 N.W. PT. SOUTHWEST
- LAND VOL. 13, PG. 180 EAST TROY
- LAND VOL. 14, PG. 109 EAST TROY
- LAND VOL. 14, PG. 173 S.W. PT. SOUTHEAST
- LAND VOL. 15, PG. 52 S.W. PT. SOUTHEAST
- LAND VOL. 16, PG. 40 S.W. PT. SOUTHEAST

ANNEXATION REC. BK. 10, PG. 148
ANNEXATION REC. BK. 11, PG. 80

LAND. 45 PG. 40 MIAMI SHORES
LAND 46-191 OLD R.R. R/W



ANNEXED TO TROY REC. 19-79
SEE TROY NE 106

137.648 AC.
LAND. 45 PG. 40

REVISED:
10-28-03

REVISED 6-18-2003
D VENTURA

David M. Daughenbaugh
C06-02290-20160R-15823
1,1548 AC. SEC. 27
4,201 AC. TOTAL
LAND. 46-191
MIAMI CONSERVANCY DISTRICT
D.B. 729-872
CORP. LINE