

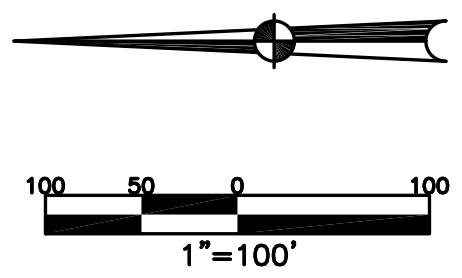
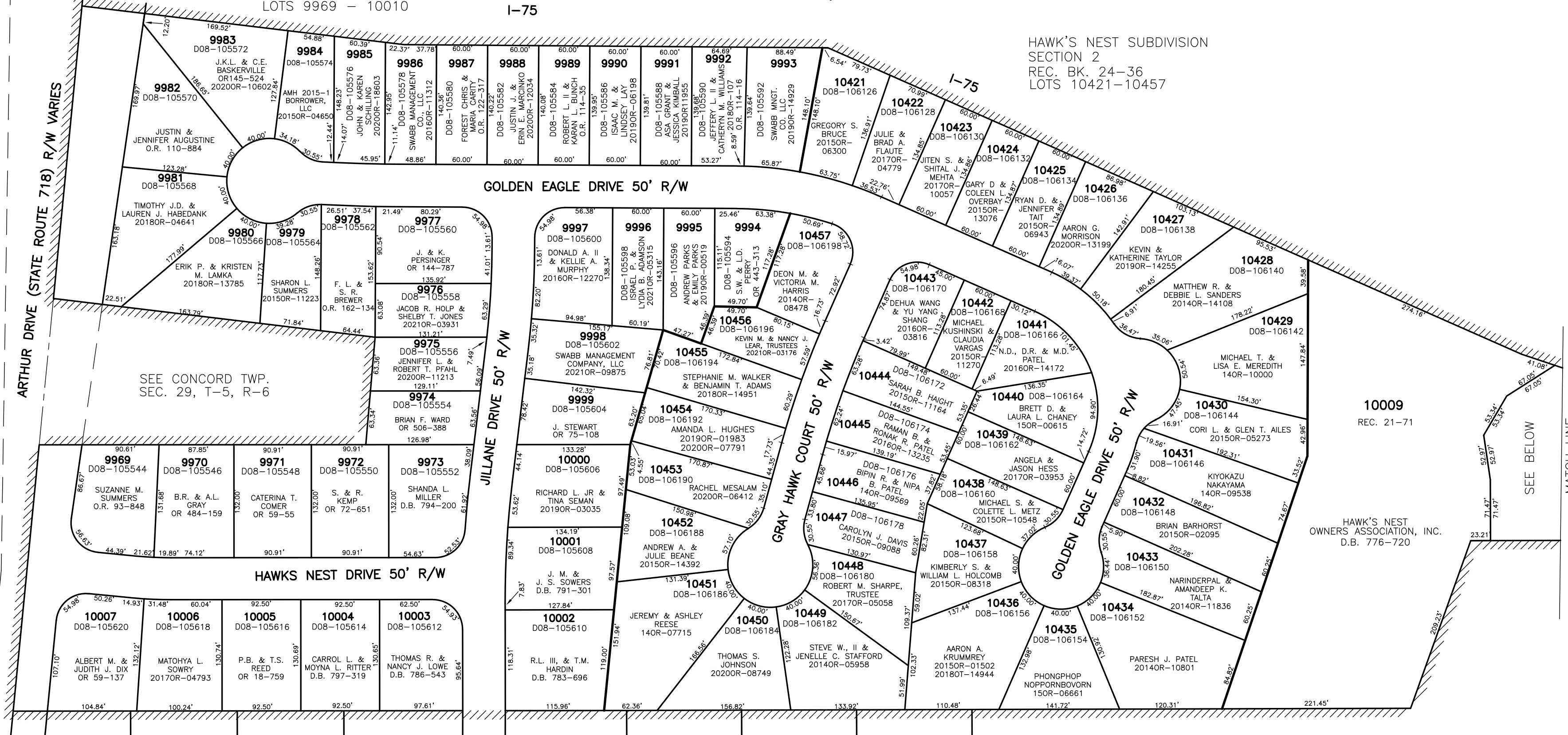
SECTION 29

TOWN 5  
RANGE 6

HAWK'S NEST SUBDIVISION  
SECTION 1  
REC. BK. 21-71  
LOTS 9969 - 10010

CITY OF TROY  
MIAMI COUNTY, OHIO

PLAT SW 207



ABBREVIATION	LEGEND	LINE LEGEND	SURVEY INDEX
2014OR-07759	= RECORDER'S DOCUMENT NUMBER		HAWK'S NEST SUBDIVISION SECTION 1
OR 66-972	= OFFICIAL RECORD 66 PAGE 972		REC. BK. 21-71
D.B. 613-172	= DEED BOOK 613, PAGE 172		LOTS 9969 - 10010
REC. 15-72	= RECORDER'S PLAT BOOK 15, PAGE 72		HAWK'S NEST SUBDIVISION SECTION 2
LND. 33-15	= LAND SURVEY VOLUME 33, PAGE 15		REC. BK. 24-36
LOT 19-12	= LOT SURVEY VOLUME 19, PAGE 12		LOTS 10421-10457
R.R. 8-29	= ROAD RECORD VOLUME 8, PAGE 29		ANNEX - LOT 9895
R/W	= RIGHT OF WAY		REC. BK. 21-23
C	= CENTERLINE		LND. 4-217
AC.	= ACRES		REC. BK. 21-23
TWP.	= TOWNSHIP		LND. 48-60
TR.	= TRACT		LND. 48-157
IL	= INLOT		LOT 23-167
			LND. 16-60

PREPARED BY: MIAMI COUNTY ENGINEER'S MAP DEPARTMENT  
PAUL P. HUELSKAMP, P.E., P.S., COUNTY ENGINEER  
DATE: JUNE 26, 2007  
REVISED: June 8, 2021 M5TORMS

HAWK'S NEST SUBDIVISION  
SECTION 2  
REC. BK. 24-36  
LOTS 10421-10457

