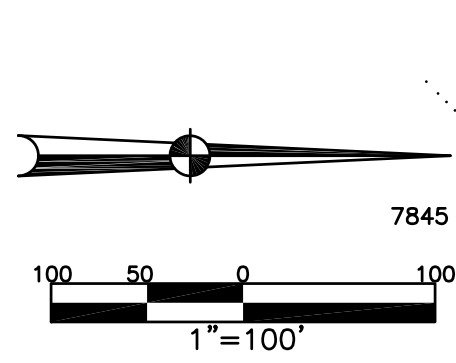


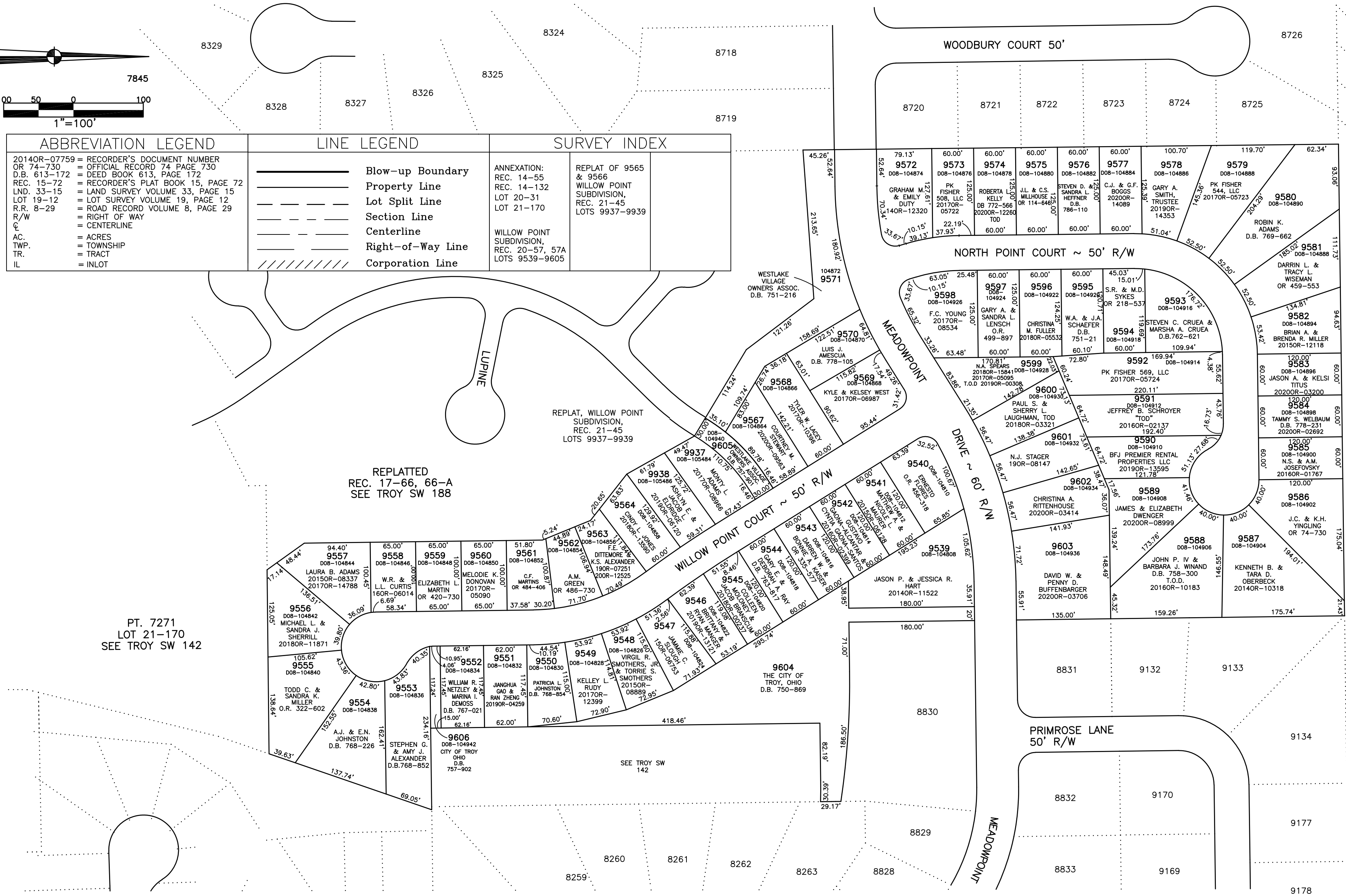
CITY OF TROY MIAMI COUNTY, OHIO

PARCEL NUMBER
D08-_____

PLAT SW 206



ABBREVIATION LEGEND	LINE LEGEND	SURVEY INDEX
2014OR-07759 = RECORDER'S DOCUMENT NUMBER OR 74-730 = OFFICIAL RECORD 74 PAGE 730	Blow-up Boundary	ANNEXATION: REC. 14-55
D.B. 613-172 = DEED BOOK 613, PAGE 172	Property Line	REC. 14-132
REC. 15-72 = RECORDER'S PLAT BOOK 15, PAGE 72	Lot Split Line	LOT 20-31
LND. 33-15 = LAND SURVEY VOLUME 33, PAGE 15	Section Line	LOT 21-170
LOT 19-12 = LOT SURVEY VOLUME 19, PAGE 12	Centerline	WILLOW POINT SUBDIVISION, REC. 21-45
R.R. 8-29 = ROAD RECORD VOLUME 8, PAGE 29	Right-of-Way Line	REPLAT OF 9565 & 9566
R/W = RIGHT OF WAY	Corporation Line	WILLOW POINT SUBDIVISION, REC. 20-57, 57A
CL = CENTERLINE		LOTS 9937-9939
AC. = ACRES		WILLOW POINT SUBDIVISION, REC. 20-57, 57A
TWP. = TOWNSHIP		LOTS 9539-9605
TR. = TRACT		
IL = INLOT		



PREPARED BY: MIAMI COUNTY ENGINEER'S MAP DEPARTMENT
 PAUL P. HUELSKAMP, P.E., P.S., COUNTY ENGINEER
 DATE: SEPTEMBER 17, 2003
 REVISED: October 2, 2020 IGRIFFIN