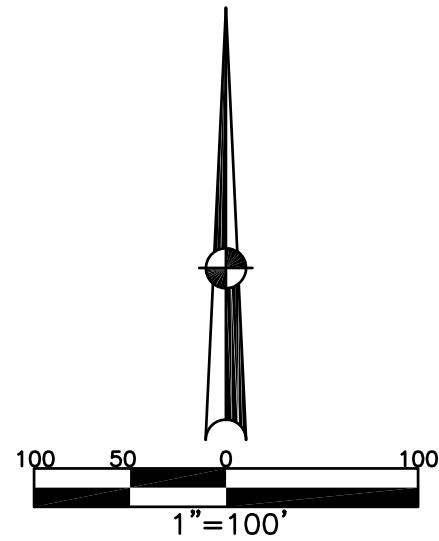


SECTION 31
TOWN 5
RANGE 6

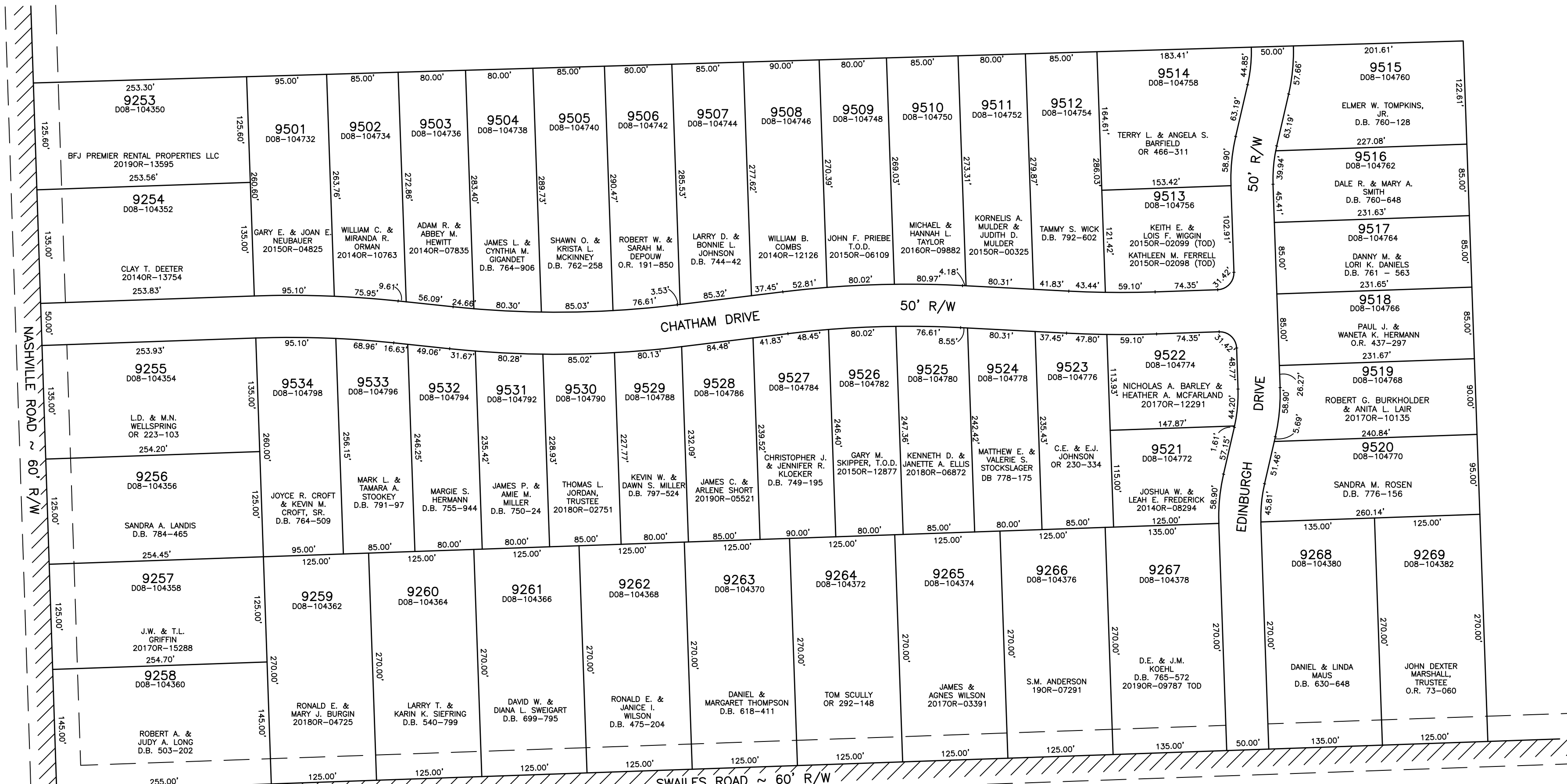
CITY OF TROY
MIAMI COUNTY, OHIO

PLAT SW 202



ABBREVIATION	LEGEND	LINE LEGEND	SURVEY INDEX
2014OR-07759 =	RECORDER'S DOCUMENT NUMBER		Blow-up Boundary
O.R. 71-355 =	OFFICIAL RECORD 71 PAGE 355		Property Line
D.B. 613-172 =	DEED BOOK 613, PAGE 172		Lot Split Line
REC. 15-72 =	RECORDER'S PLAT BOOK 15, PAGE 72		Section Line
LND. 33-15 =	LAND SURVEY VOLUME 33, PAGE 15		Centerline
LOT 19-12 =	LOT SURVEY VOLUME 19, PAGE 12		Right-of-Way Line
R.R. 8-29 =	ROAD RECORD VOLUME 8, PAGE 29		Corporation Line
R/W	RIGHT OF WAY		
⊕	CENTERLINE		
AC.	ACRES		
TWP.	TOWNSHIP		
TR.	TRACT		
IL	INLOT		

PAMELA ESTATES SECTION TWO
REC. 20-48A, 48B, 48C
LOTS 9501-9534



PAMELA SUBDIVISION REC. 10-18
LOTS 1-17

REC. 19-127 (ANNEXATION)
LOTS 9253-9269

PREPARED BY: MIAMI COUNTY ENGINEER'S MAP DEPARTMENT
PAUL P. HUELSKAMP, P.E., P.S., COUNTY ENGINEER
DATE: JUNE 22, 2003
REVISED: August 27, 2019 DSTUMPPF