

SECTION 31

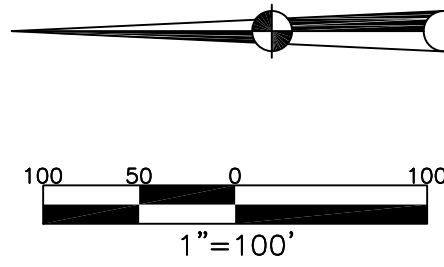
TOWN 5

RANGE 6

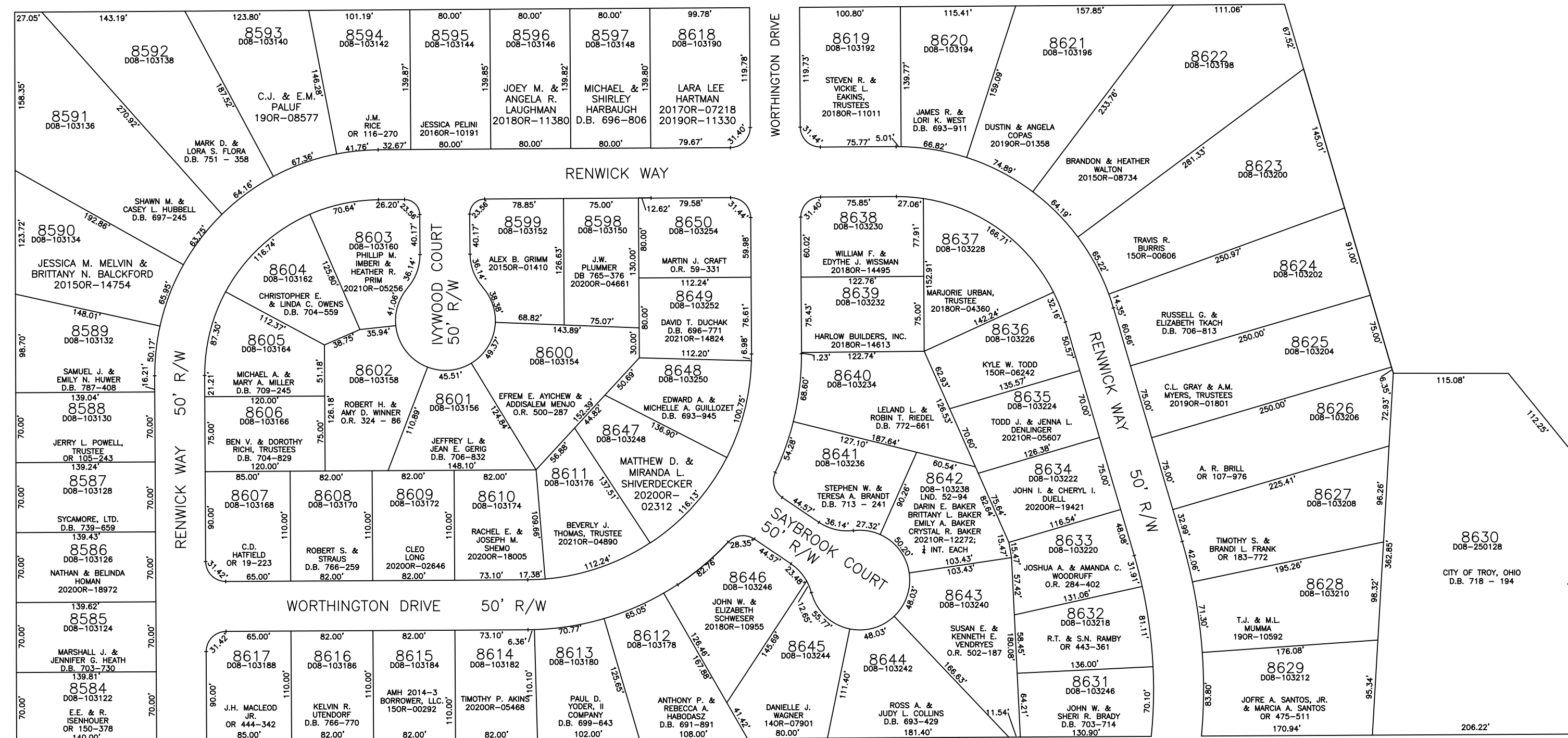
CITY of TROY  
MIAMI COUNTY, OHIO

PARCEL ID NUMBER  
DOB-\_\_\_\_\_

PLAT SW 195



ABBREVIATION LEGEND	LINE LEGEND	SURVEY INDEX
2014OR-07759 = RECORDER'S DOCUMENT NUMBER	— Blow-up Boundary	KENSINGTON SECTION 3 REC. 18-64, 64A LOTS 8584-8617
OR 73-347 = OFFICIAL RECORD 73 PAGE 347	— Property Line	
D.B. 613-172 = DEED BOOK 613, PAGE 172	--- Lot Split Line	KENSINGTON SECTION 4 REC. 18-65, 65A LOTS 8618-8650
REC. 15-72 = RECORDER'S PLAT BOOK 15, PAGE 72	--- Section Line	
LND. 33-15 = LAND SURVEY VOLUME 33, PAGE 15	--- Centerline	
LOT 19-12 = LOT SURVEY VOLUME 19, PAGE 12	--- Right-of-Way Line	
R.R. 8-29 = ROAD RECORD VOLUME 8, PAGE 29	////// Corporation Line	
R/W = RIGHT OF WAY		
C. = CENTERLINE		
AC. = ACRES		
TWP. = TOWNSHIP		
TR. = TRACT		
IL = INLOT		



WEST MARKET STREET  
(STATE ROUTE 55)

8548 8549 8550 8551 8552 8447 8448 8449 8450 8451 8452 8453 8455 8456

SEE TROS194 FOR THIS AREA

PREPARED BY: MIAMI COUNTY ENGINEER'S MAP DEPARTMENT  
 PAUL P. HUELSKAMP, P.E., P.S., COUNTY ENGINEER  
 DATE: JANUARY 5, 1999  
 REVISED: August 26, 2021 CSHOUP