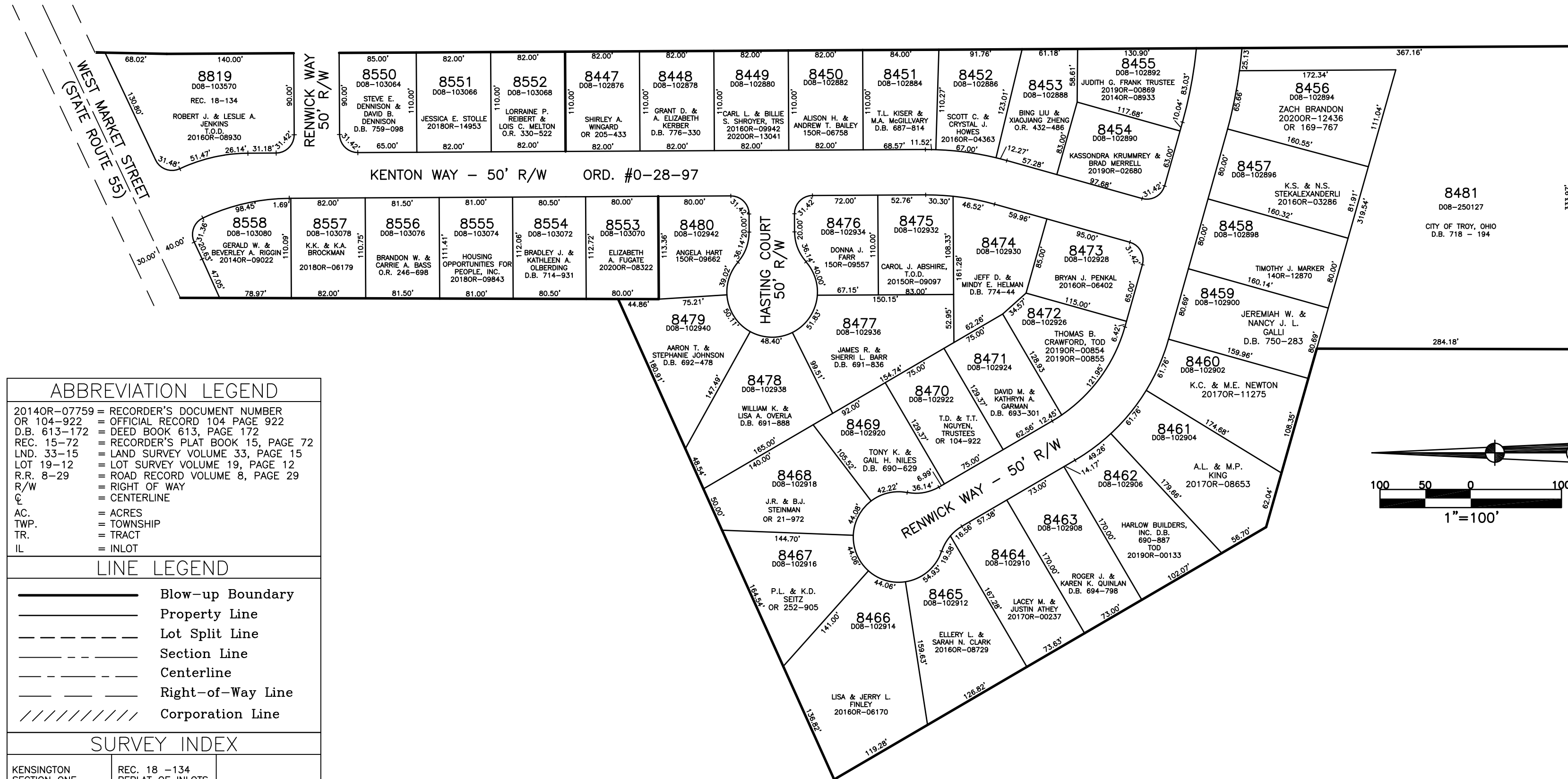


SECTION 31  
TOWN 5  
RANGE 6

CITY OF TROY  
MIAMI COUNTY, OHIO

PARCEL ID NUMBER  
D08-\_\_\_\_\_

SW 194



ABBREVIATION LEGEND	
2014OR-07759	= RECORDER'S DOCUMENT NUMBER
OR 104-922	= OFFICIAL RECORD 104 PAGE 922
D.B. 613-172	= DEED BOOK 613, PAGE 172
REC. 15-72	= RECORDER'S PLAT BOOK 15, PAGE 72
LND. 33-15	= LAND SURVEY VOLUME 33, PAGE 15
LOT 19-12	= LOT SURVEY VOLUME 19, PAGE 12
R.R. 8-29	= ROAD RECORD VOLUME 8, PAGE 29
R/W	= RIGHT OF WAY
C.	= CENTERLINE
AC.	= ACRES
TWP.	= TOWNSHIP
TR.	= TRACT
IL	= INLOT

LINE LEGEND	
	Blow-up Boundary
	Property Line
	Lot Split Line
	Section Line
	Centerline
	Right-of-Way Line
	Corporation Line

SURVEY INDEX	
KENSINGTON SECTION ONE REC. 17-139 LOTS 8445-8481	REC. 18 -134 REPLAT OF INLOTS 8548 & 8549
REC. 14-68 (ANNEXED)	
KENSINGTON SECTION TWO REC. 18-31 & 31A LOTS 8548-8558	

PREPARED BY: MIAMI COUNTY ENGINEER'S MAP DEPARTMENT  
PAUL P. HUELSKAMP, COUNTY ENGINEER  
DATE: JUNE 2, 1997  
REVISED: September 15, 2020 IGRIFIN