

SECTION 31

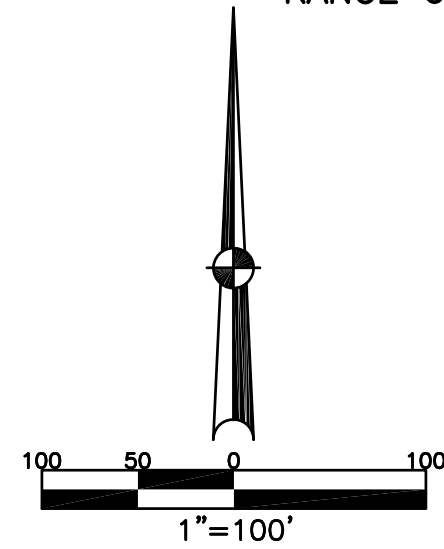
TOWN 5

RANGE 6

CITY OF TROY
MIAMI COUNTY, OHIO

PARCEL ID NUMBER
D08-_____

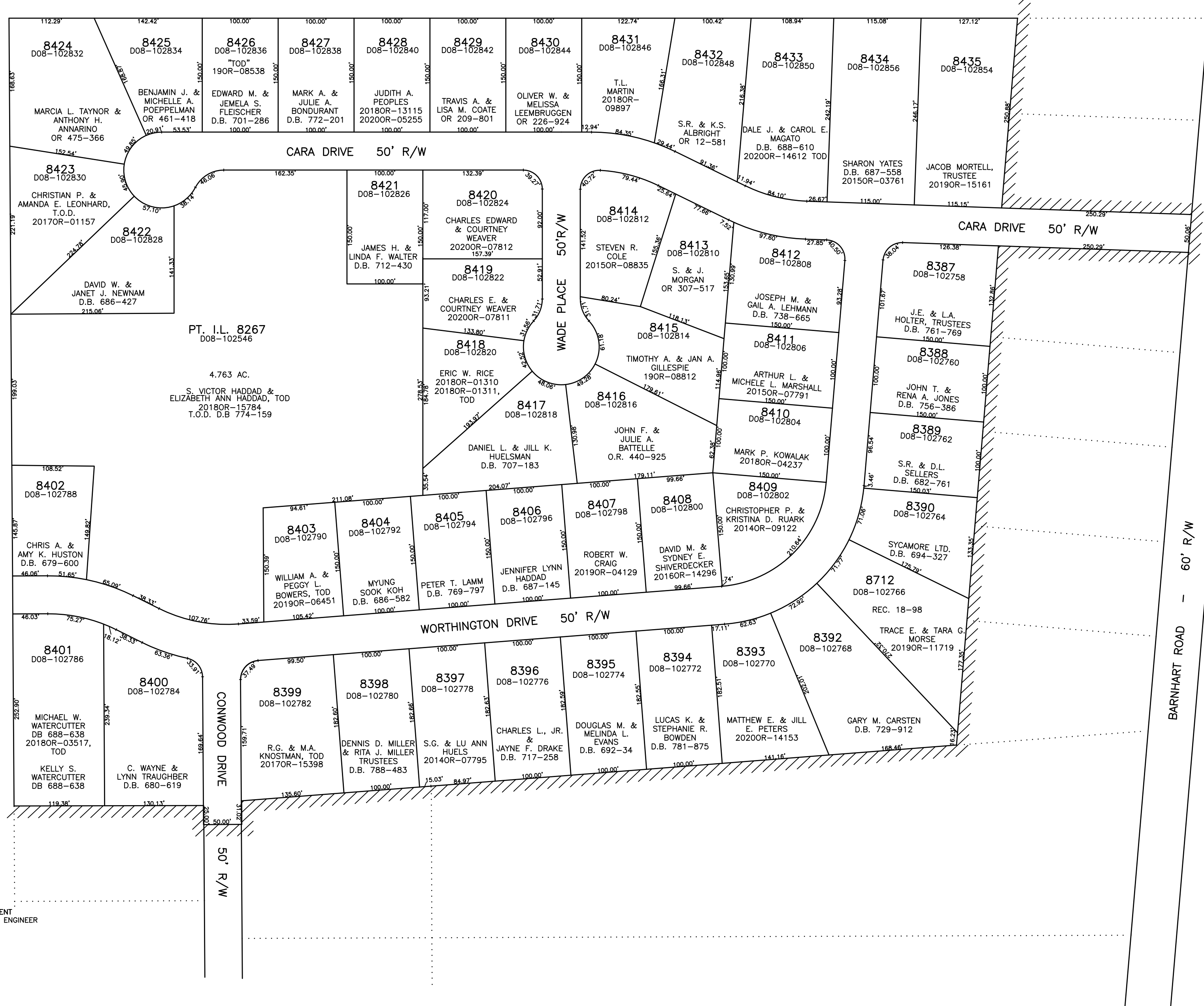
PLAT SW 191



ABBREVIATION LEGEND	
2014OR-07759	= RECORDER'S DOCUMENT NUMBER
OR 248-645	= OFFICIAL RECORD 248 PAGE 645
D.B. 613-172	= DEED BOOK 613, PAGE 172
REC. 15-72	= RECORDER'S PLAT BOOK 15, PAGE 72
LND. 33-15	= LAND SURVEY VOLUME 33, PAGE 15
LOT 19-12	= LOT SURVEY VOLUME 19, PAGE 12
R.R. 8-29	= ROAD RECORD VOLUME 8, PAGE 29
R/W	= RIGHT OF WAY
C	= CENTERLINE
AC.	= ACRES
TWP.	= TOWNSHIP
TR.	= TRACT
IL	= INLOT

LINE LEGEND	
	Blow-up Boundary
	Property Line
	Lot Split Line
	Section Line
	Centerline
	Right-of-Way Line
	Corporation Line

SURVEY INDEX		
LND. 26-4	REC. 17-106	
	REC. 17-124	
	REC. 18-98	



CONWOOD ESTATES
LOTS 8387-8435
REC. 17-124

PREPARED BY: MIAMI COUNTY ENGINEER'S MAP DEPARTMENT
PAUL P. HUELSKAMP, P.E., P.S., COUNTY ENGINEER
DATE: DECEMBER 9, 1996
REVISED: October 8, 2020 DSTUMPPF