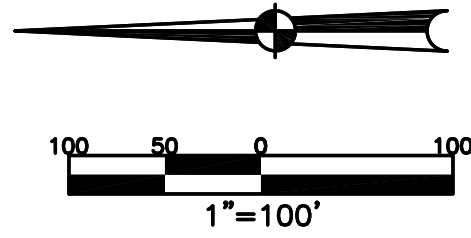


SECTION 18
TOWN 5
RANGE 6

CITY OF TROY
MIAMI COUNTY, OHIO

SMDA NUMBER
D08-SW187-_____

PLAT SW 187



ANNEXATION
REC. 14-133

ABBREVIATION LEGEND	
OR 273-285	= OFFICIAL RECORD 273 PAGE 285
D.B. 613-172	= DEED BOOK 613, PAGE 172
REC. 15-72	= RECORDER'S PLAT BOOK 15, PAGE 72
LND. 33-15	= LAND SURVEY VOLUME 33, PAGE 15
LOT 19-12	= LOT SURVEY VOLUME 19, PAGE 12
R.R. 8-29	= ROAD RECORD VOLUME 8, PAGE 29
R/W	= RIGHT OF WAY
C	= CENTERLINE
AC.	= ACRES
TWP.	= TOWNSHIP
TR.	= TRACT
IL	= INLOT

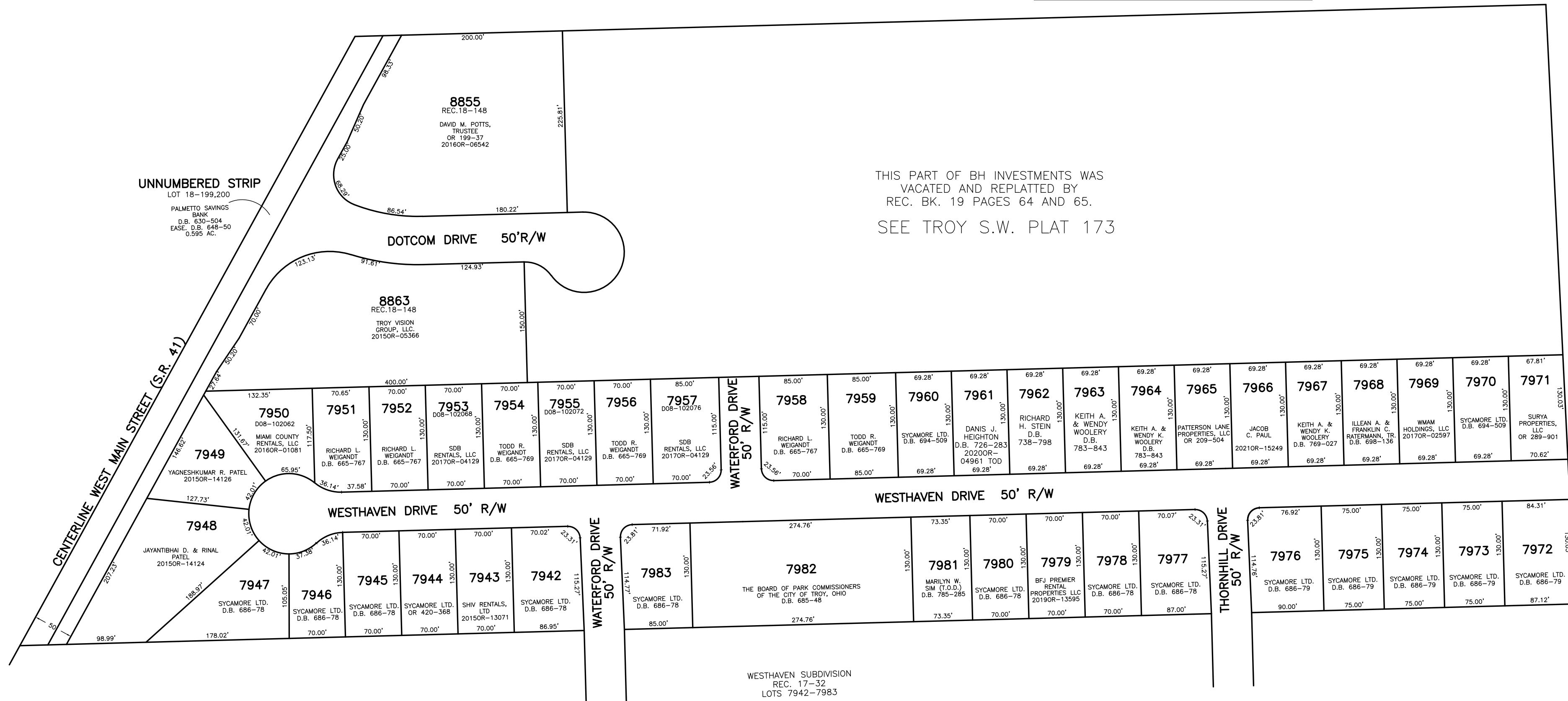
LINE LEGEND	
	Blow-up Boundary
	Property Line
	Lot Split Line
	Section Line
	Centerline
	Right-of-Way Line
	Corporation Line

SURVEY INDEX		
REC. 14-133	LOT 19-7	
REC. 17-32	LOT 18-199	
REC. 18-148	LOT 18-200	
REC. 19-64		
REC. 19-65		

PREPARED BY: MIAMI COUNTY ENGINEER'S MAP DEPARTMENT
PAUL P. HUELSKAMP, P.E., P.S., COUNTY ENGINEER
DATE: OCTOBER 13, 1995
REVISED: September 1, 2021 NINAMDAR

BH INVESTMENTS - DEV. SEC. 1
REC. 18-148
LOTS 8855 & 8863

THIS PART OF BH INVESTMENTS WAS
VACATED AND REPLATTED BY
REC. BK. 19 PAGES 64 AND 65.
SEE TROY S.W. PLAT 173



WESTHAVEN SUBDIVISION
REC. 17-32
LOTS 7942-7983