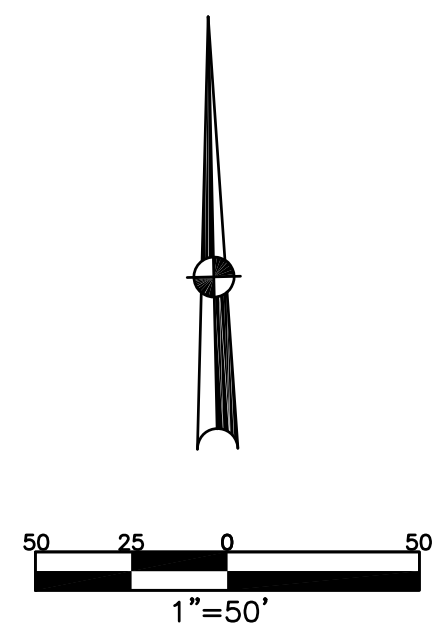


SECTION 19  
TOWN 5  
RANGE 6

CITY OF TROY  
MIAMI COUNTY, OHIO

PARCEL ID NUMBER  
D08-

PLAT SW 178



- CREATION  
REC. 15-7
- COBBLESTONE POINTE  
PLANNED UNIT DEVELOPMENT  
SECTION 1  
LOTS 7438-7443, REC 15-60
- SECTION 2  
LOTS 7495-7499, REC 15-95
- SECTION 3  
LOTS 7580-7585, REC 16-16
- SECTION 4  
LOTS 7664-7669, REC 16-71
- SECTION 5  
LOTS 7814-7823, REC. 16-119A
- SECTION 6  
LOTS 8118-8126, REC 17-60A
- SECTION 7  
LOTS 8342-8347, REC 17-117A
- SECTION 8  
LOTS 8560-8565, REC 18-36A
- SECTION 9  
LOTS 8664-8669, REC 18-82A
- SECTION 10  
LOTS 8844-8852, REC 18-145A

ABBREVIATION LEGEND	
2014OR-07759	= RECORDER'S DOCUMENT NUMBER
OR 406-509	= OFFICIAL RECORD 406 PAGE 509
D.B. 613-172	= DEED BOOK 613, PAGE 172
REC. 15-72	= RECORDER'S PLAT BOOK 15, PAGE 72
LND. 33-15	= LAND SURVEY VOLUME 33, PAGE 15
LOT 19-12	= LOT SURVEY VOLUME 19, PAGE 12
R.R. 8-29	= ROAD RECORD VOLUME 8, PAGE 29
R/W	= RIGHT OF WAY
C	= CENTERLINE
AC.	= ACRES
TWP.	= TOWNSHIP
TR.	= TRACT
IL	= INLOT

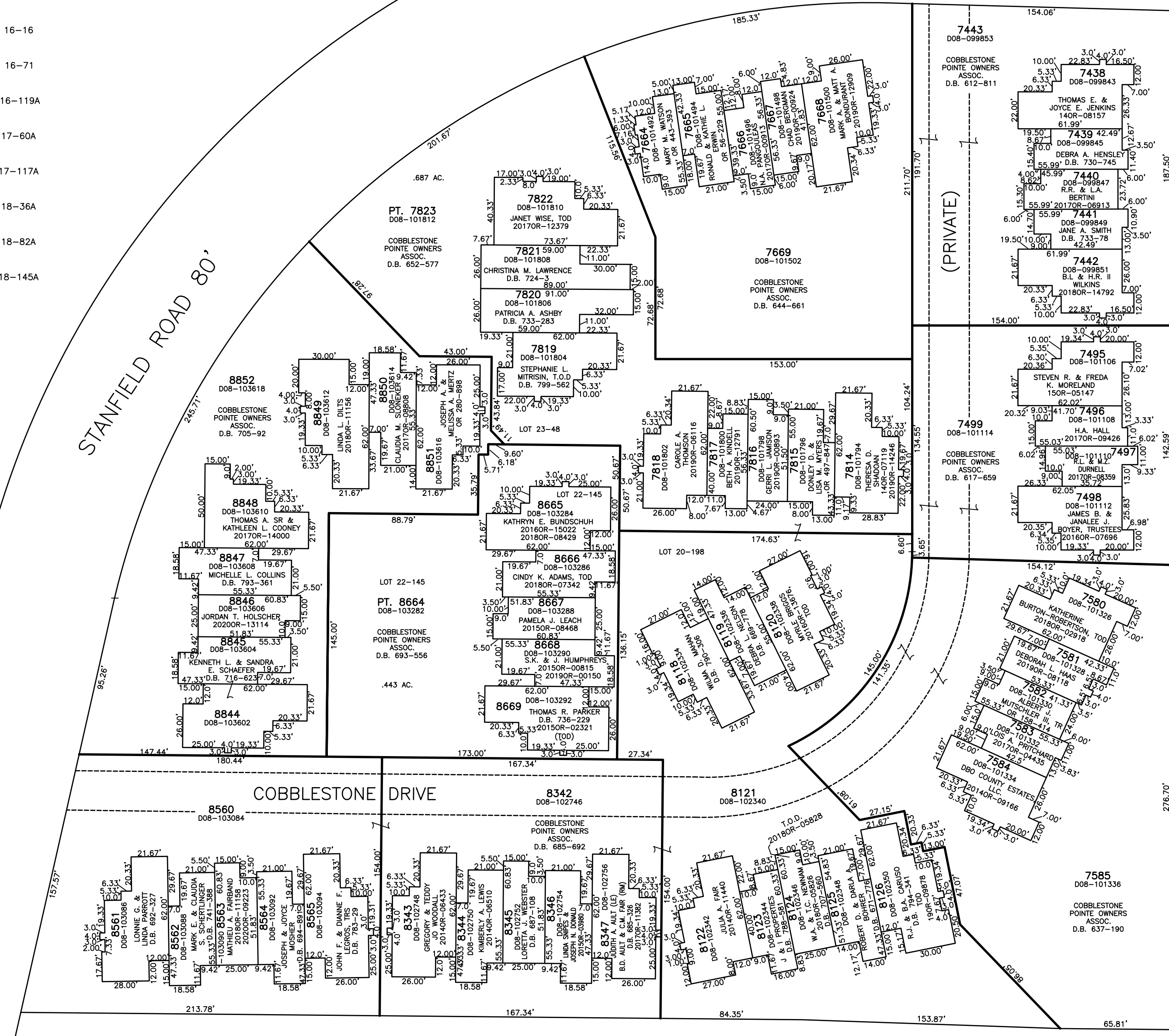
  

LINE LEGEND	
	Blow-up Boundary
	Property Line
	Lot Split Line
	Section Line
	Centerline
	Right-of-Way Line
	Corporation Line

SURVEY INDEX		
REC. 15-7	REC. 18-145A	LOT 18-86
REC. 15-60		LOT 20-198
REC. 15-95		LOT 21-64
REC. 16-16		LOT 22-145
REC. 16-71		LOT 23-48
REC. 16-119A		
REC. 17-60A		
REC. 17-117A		
REC. 18-36A		
REC. 18-82A		

STANFIELD ROAD 80'



PREPARED BY: MIAMI COUNTY ENGINEER'S MAP DEPARTMENT  
PAUL P. HUELSKAMP, P.E., P.S., COUNTY ENGINEER  
DATE: APRIL 15, 2014 MB  
REVISED: September 16, 2020 DSTUMPPF