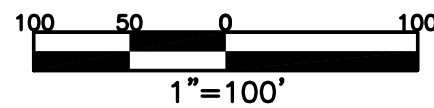


SECTION 29  
TOWN 5  
RANGE 6

CITY OF TROY  
MIAMI COUNTY, OHIO

PARCEL ID NUMBER  
D08-\_\_\_\_\_

PLAT SW 177



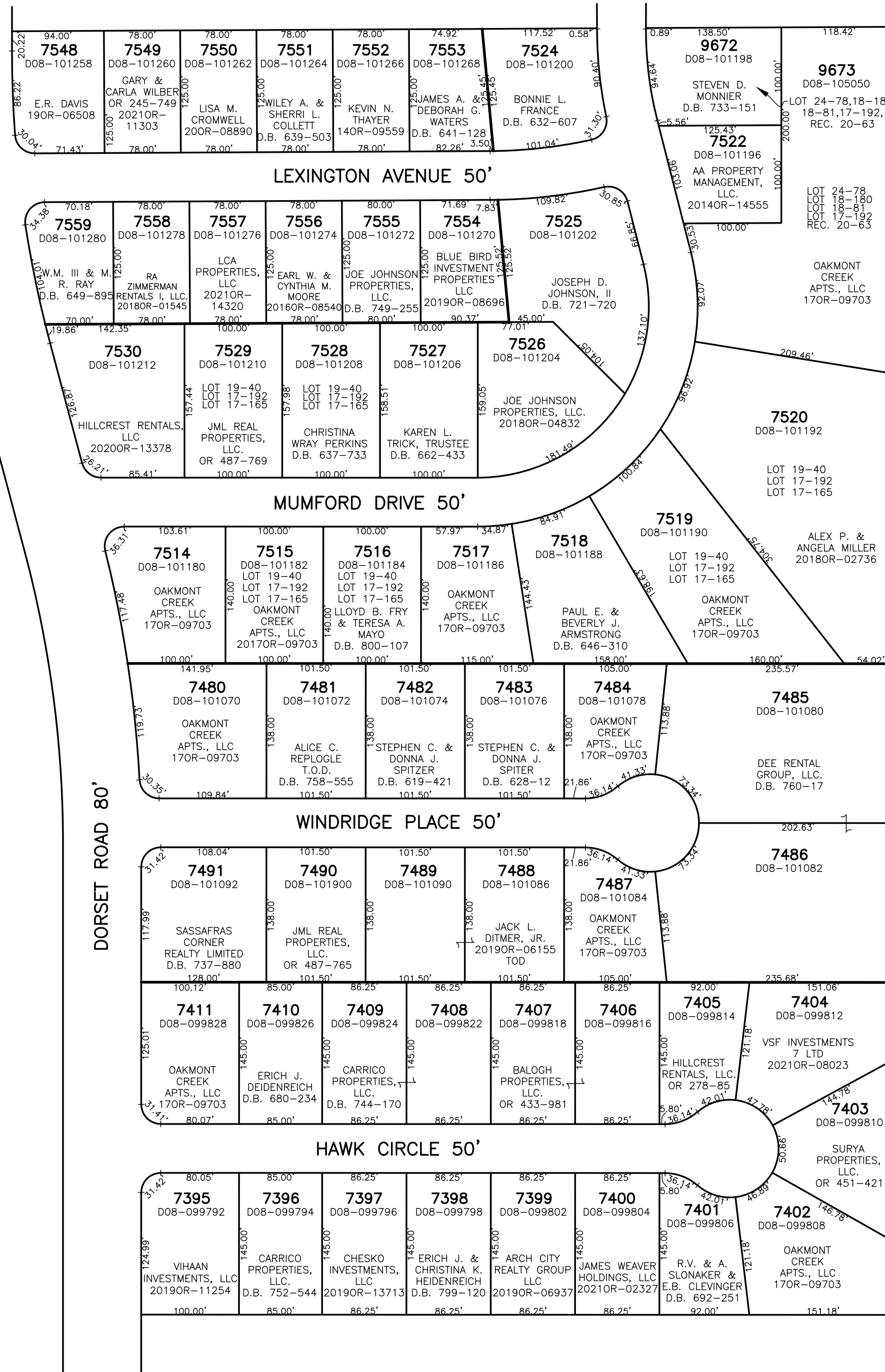
ABBREVIATION LEGEND	
2014OR-07759	= RECORDER'S DOCUMENT NUMBER
OR 406-509	= OFFICIAL RECORD 406 PAGE 509
D.B. 613-172	= DEED BOOK 613, PAGE 172
REC. 15-72	= RECORDER'S PLAT BOOK 15, PAGE 72
LND. 33-15	= LAND SURVEY VOLUME 33, PAGE 15
LOT 19-12	= LOT SURVEY VOLUME 19, PAGE 12
R.R. 8-29	= ROAD RECORD VOLUME 8, PAGE 29
R/W	= RIGHT OF WAY
C	= CENTERLINE
AC.	= ACRES
TWP.	= TOWNSHIP
TR.	= TRACT
IL	= INLOT

LINE LEGEND	
	Blow-up Boundary
	Property Line
	Lot Split Line
	Section Line
	Centerline
	Right-of-Way Line
	Corporation Line

SURVEY INDEX	
REC. 15-43	LOT 17-165
REC. 15-92	LOT 17-192
REC. 15-127	LOT 18-81
REC. 16-7	LOT 18-180
REC. 20-63	LOT 19-40
	LOT 24-78



HAWK COVE  
REC. 15-43  
LOTS 7395-7411

WINDRIDGE PLACE  
SECTION 1  
REC. 15-92  
LOTS 7480-7491

WINDRIDGE PLACE  
SECTION 2  
REC. 15-127  
LOTS 7514-7520  
7522  
7524-7525

REC. 20-63  
LOTS 9672 & 9673

WINDRIDGE PLACE  
SECTION 3  
REC. 16-7  
LOTS 7548-7559