

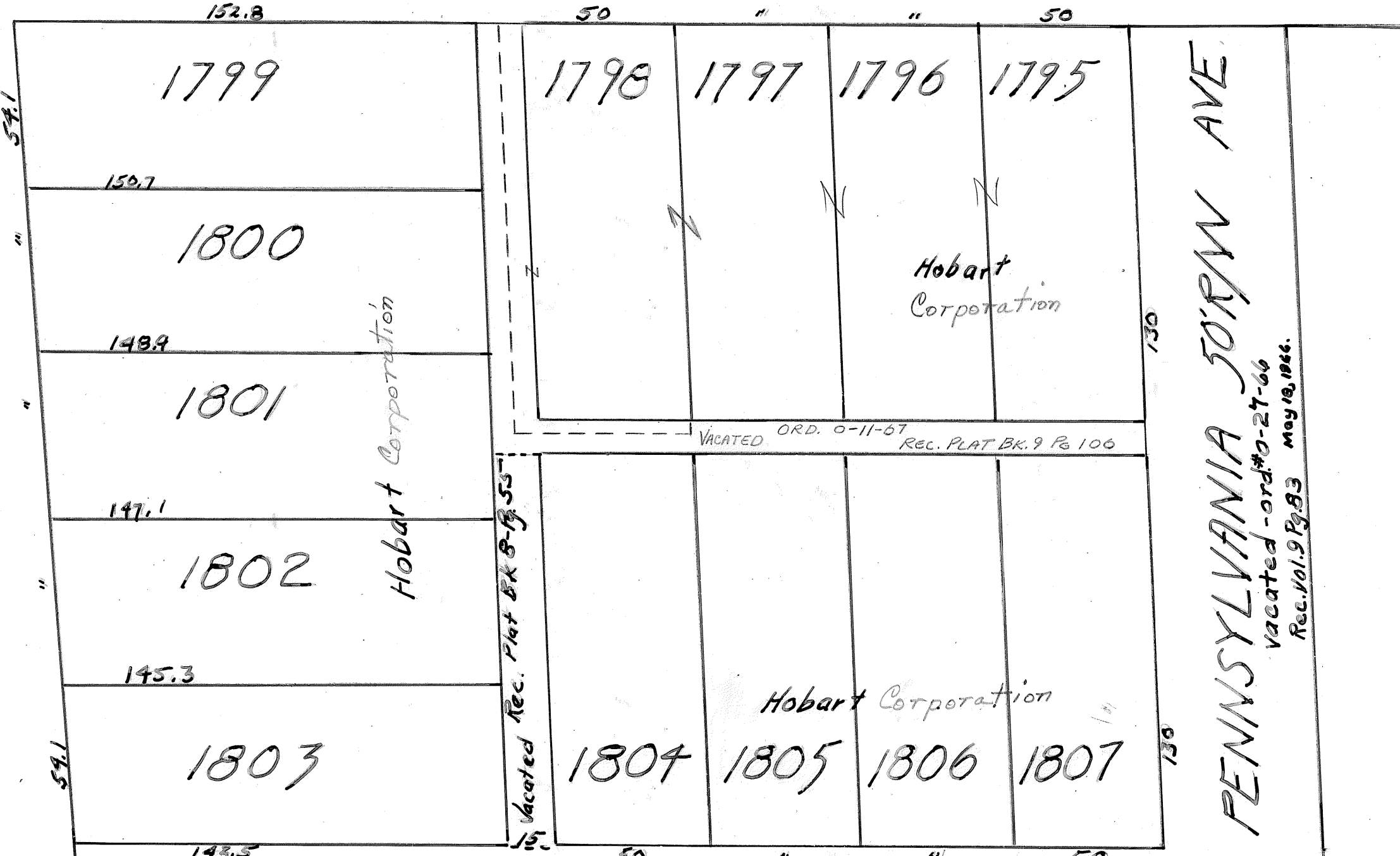
AUDITOR'S REPLAT SEE TROY SW. PLAT NO. 153

DRURY 50' R/W LANE

AVE

80' R/W

RIDGE



Vacated-May 18, 1966.
Ord. #0-27-66
Rec. Vol. 9 Pg. 83

VACATED ORD. 0-11-67
REC. PLAT BK. 9 Pg. 106

Vacated - Ord. #0-27-66
Rec. Vol. 9 Pg. 83 May 18, 1966.

SIMPSON 50' R/W ST.