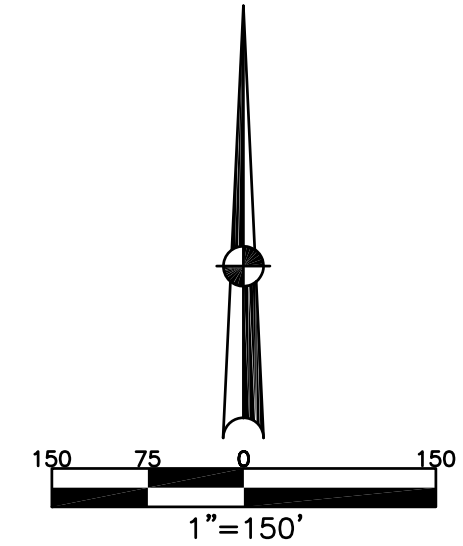


PARCEL ID NUMBER  
D08-\_\_\_\_\_

# PLAT NW 103 CITY OF TROY MIAMI COUNTY, OHIO

SECTION 18, TOWN 5, RANGE 6



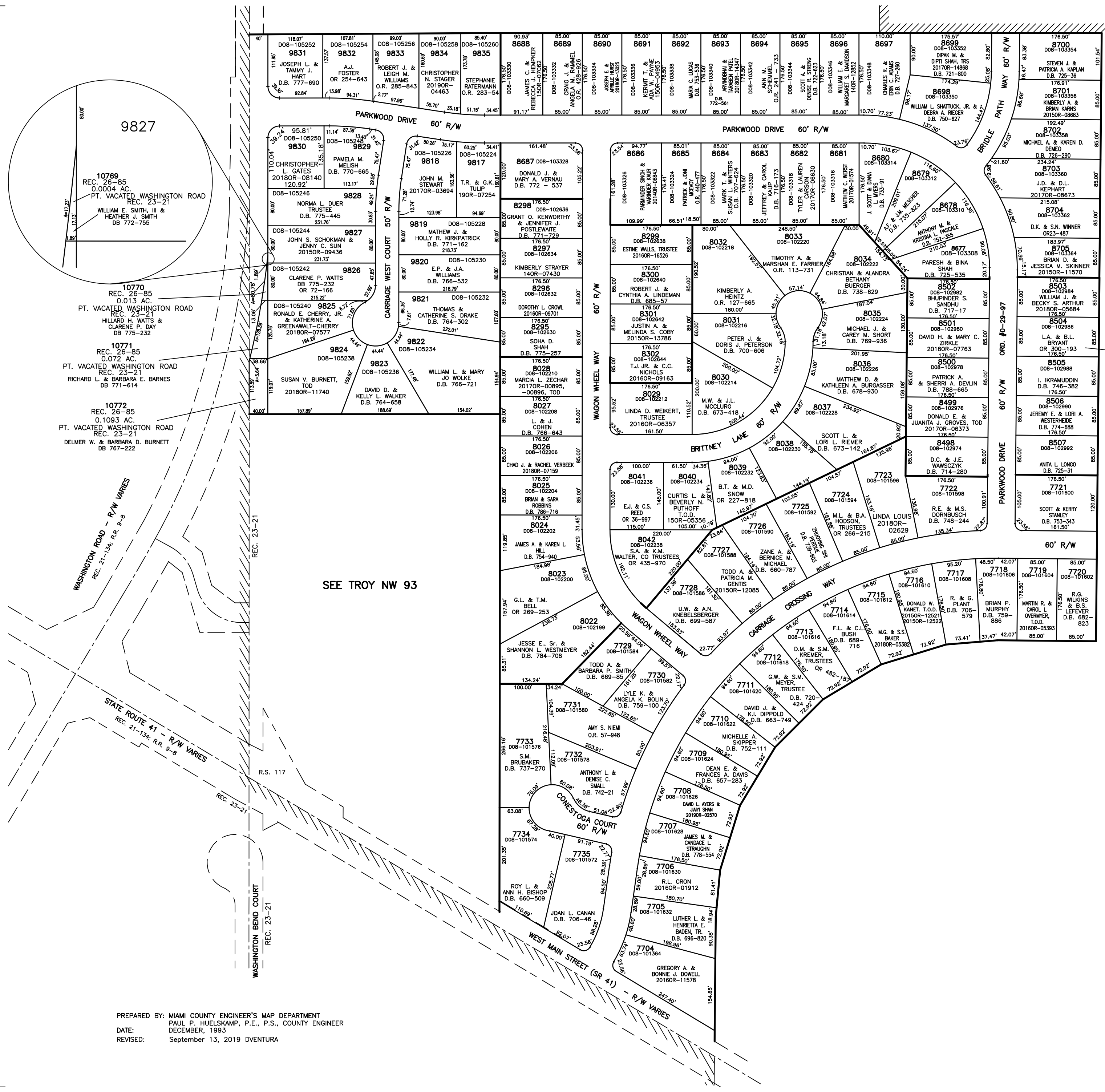
ABBREVIATION LEGEND	
20140R-07759	= RECORDER'S DOCUMENT NUMBER
O.R. 57-948	= OFFICIAL RECORD 57, PAGE 948
D.B. 613-172	= DEED BOOK 613, PAGE 172
REC. 15-72	= RECORDER'S PLAT BOOK 15, PAGE 72
LND. 33-15	= LAND SURVEY VOLUME 33, PAGE 15
LOT 19-12	= LOT SURVEY VOLUME 19, PAGE 12
R.R. 8-29	= ROAD RECORD VOLUME 8, PAGE 29
R/W	= RIGHT OF WAY
C	= CENTERLINE
AC.	= ACRES
TWP.	= TOWNSHIP
TR.	= TRACT
IL	= INLOT

LINE LEGEND	
	Blow-up Boundary
	Property Line
	Lot Split Line
	Section Line
	Centerline
	Right-of-Way Line
	Corporation Line

SURVEY INDEX	
LOT 20-81	CARRIAGE CROSSING -SEC. 4
LOT 20-169	LOTS 8498 - 8507
REC. 15-117 (ANNEXATION)	REC. 17-147
REC. 19-128 (ANNEXATION)	
LND. 42-188	CARRIAGE CROSSING -SEC. 5
REC. 26-85	LOTS 8677 - 8705
	REC. 18-88
	CARRIAGE WEST SUBDIVISION
	LOTS 9817 - 9835
	REC. 20-134
CARRIAGE CROSSING -SEC. 1	
LOTS 7704 - 7735	
REC. 16-88	
CARRIAGE CROSSING -SEC. 2	
LOTS 8022 - 8042	
REC. 17-41	
CARRIAGE CROSSING -SEC. 3	
LOTS 8295 - 8302	
REC. 17-109	
	C/C/L PLAT REC. 21-134
	ROAD RELOCATION RR 9-8
	VACATION PLAT REC. 23-21
	R.S. 117



PREPARED BY: MIAMI COUNTY ENGINEER'S MAP DEPARTMENT  
PAUL P. HUELSKAMP, P.E., P.S., COUNTY ENGINEER  
DATE: DECEMBER, 1993  
REVISED: September 13, 2019 DVENTURA

SEE TROY NW 93