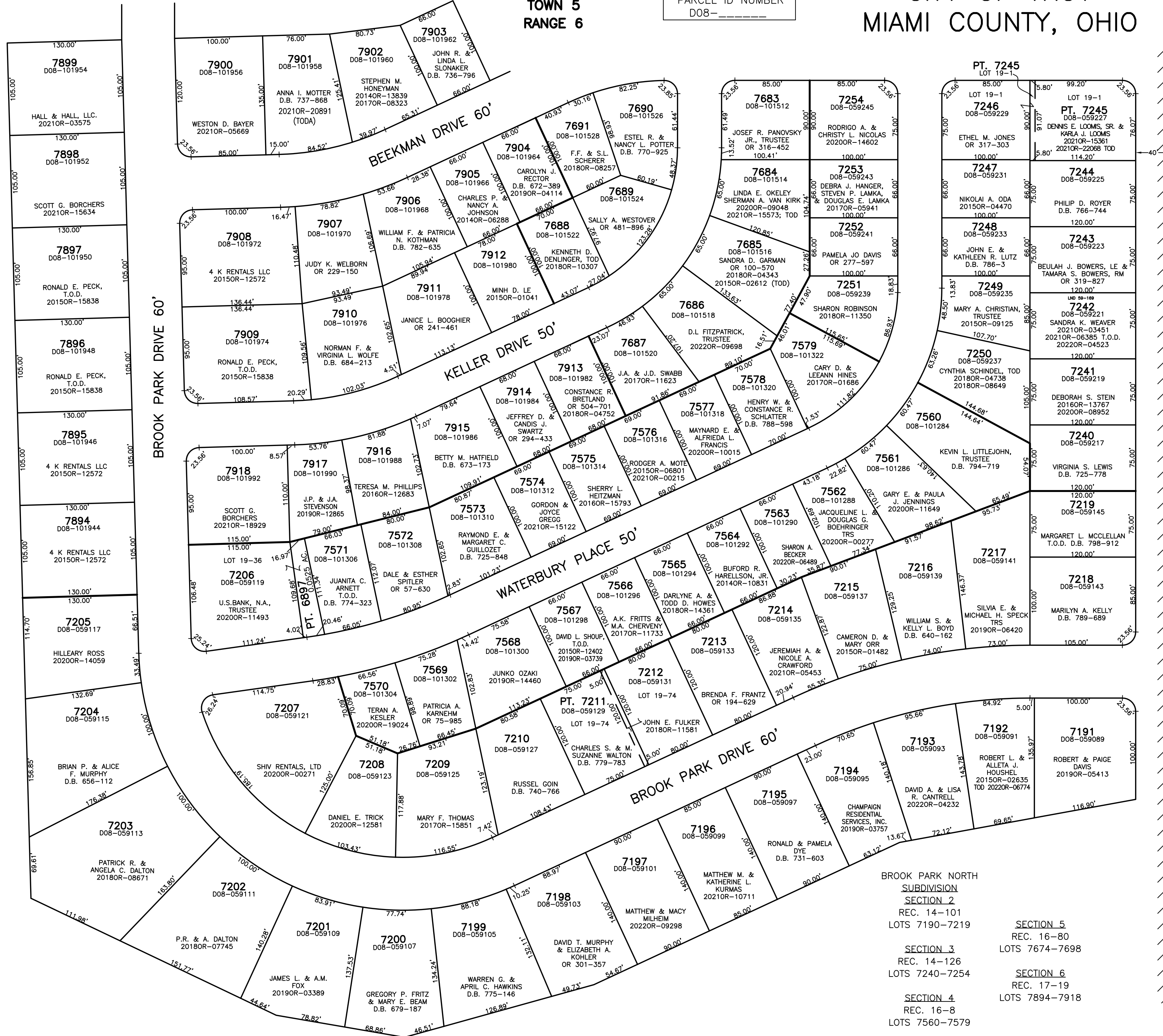


SECTION 17
TOWN 5
RANGE 6

PARCEL ID NUMBER
D08-_____

CITY OF TROY
MIAMI COUNTY, OHIO

PLAT NW 101



ABBREVIATION LEGEND

20140R-07759	=	RECORDER'S DOCUMENT NUMBER
OR 406-509	=	OFFICIAL RECORD 406 PAGE 509
D.B. 613-172	=	DEED BOOK 613, PAGE 172
REC. 15-72	=	RECORDER'S PLAT BOOK 15, PAGE 72
LND. 33-15	=	LAND SURVEY VOLUME 33, PAGE 15
LOT 19-12	=	LOT SURVEY VOLUME 19, PAGE 12
R.R. 8-29	=	ROAD RECORD VOLUME 8, PAGE 29
R/W	=	RIGHT OF WAY
C.	=	CENTERLINE
AC.	=	ACRES
TWP.	=	TOWNSHIP
TR.	=	TRACT
IL	=	INLOT

LINE LEGEND

	Blow-up Boundary
	Property Line
	Lot Split Line
	Section Line
	Centerline
	Right-of-Way Line
	Corporation Line

SURVEY INDEX

REC. 14-101	LOT 19-1
REC. 14-126	LOT 19-36
REC. 16-8	LOT 19-74
REC. 16-80	
REC. 17-19	

PREPARED BY:
MIAMI COUNTY ENGINEER'S MAP DEPARTMENT
PAUL P. HUELSKAMP, P.E., P.S., COUNTY ENGINEER
DATE: MAY 2, 2014 MB
REVISED: June 15, 2022 MSTORMS

BROOK PARK NORTH
SUBDIVISION
SECTION 2
REC. 14-101
LOTS 7190-7219

SECTION 3
REC. 14-126
LOTS 7240-7254

SECTION 4
REC. 16-8
LOTS 7560-7579

SECTION 5
REC. 16-80
LOTS 7674-7698

SECTION 6
REC. 17-19
LOTS 7894-7918