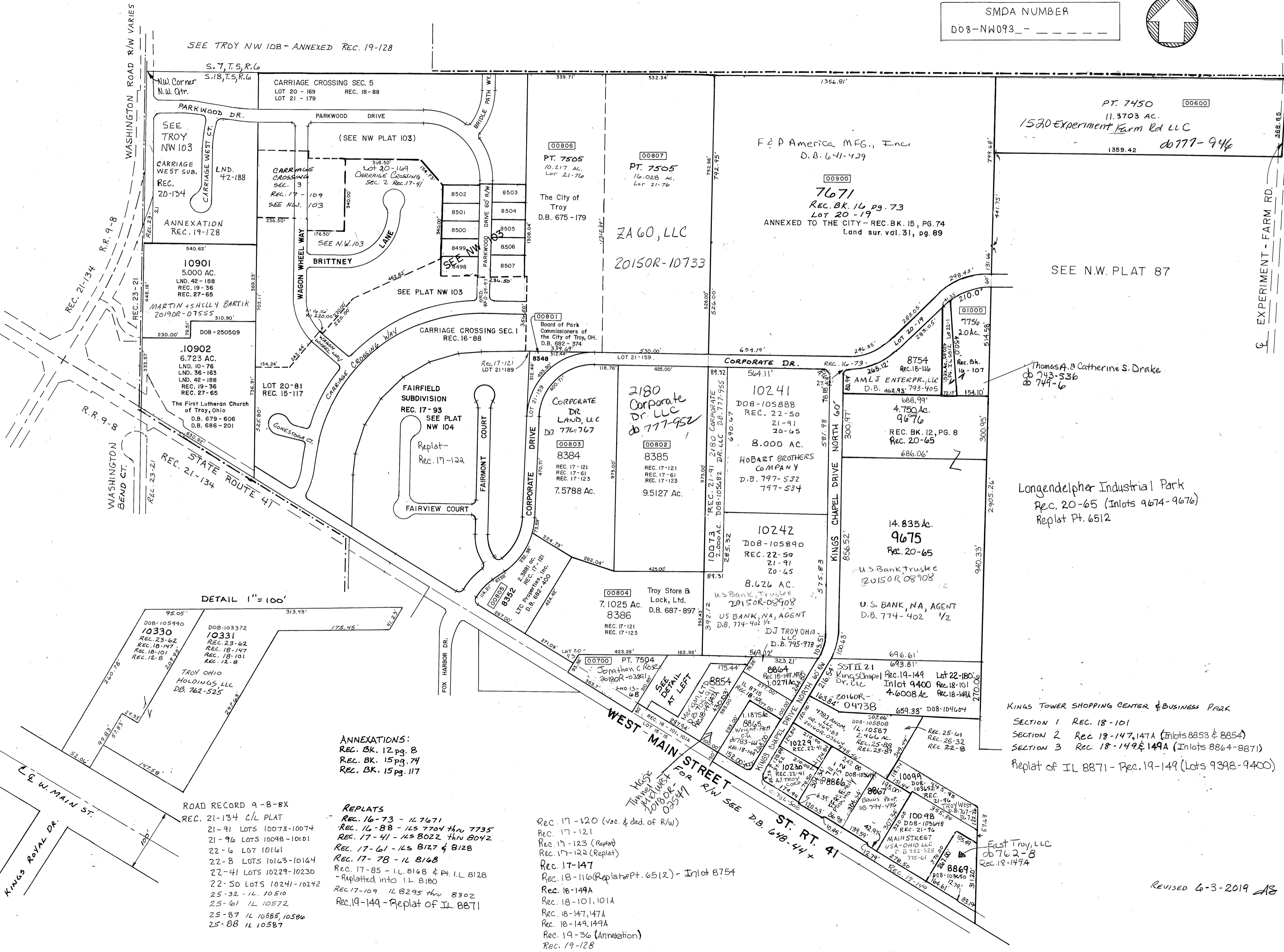
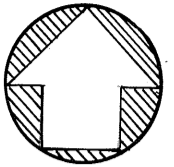


MIAMI COUNTY, OH  
CITY OF TROY

N.W. PLAT NO. 93

SCALE: 1" = 300'

SMDA NUMBER  
008-NW093-\_\_\_\_\_



SEE TROY NW 10B - ANNEXED REC. 19-128

S. 7, T. 5, R. 6

N.W. Corner  
N.W. Qtr.  
SEE TROY NW 103  
CARRIAGE WEST SUB.  
REC. 20-134

CARRIAGE CROSSING SEC. 5  
LOT 20 - 169 REC. 18-88  
LOT 21 - 179

PARKWOOD DR.  
SEE TROY NW 103  
CARRIAGE WEST CT.  
LND. 42-188  
REC. 20-134

PARKWOOD DRIVE  
(SEE NW PLAT 103)

ANNEXATION  
REC. 19-128

CARRIAGE CROSSING SEC. 3  
REC. 17-109  
SEE NW 103

10901  
5.000 AC.  
LND. 42-188  
REC. 19-36  
REC. 27-65

BRITNEY  
SEE NW 103  
LANE

MARTIN + SHELLY BARTIK  
2019OR-07555

SEE PLAT NW 103

10902  
6.723 AC.  
LND. 10-76  
LND. 36-163  
LND. 42-188  
REC. 19-36  
REC. 27-65

FAIRFIELD SUBDIVISION  
REC. 17-93  
SEE PLAT NW 104

The First Lutheran Church  
of Troy, Ohio  
D.B. 679-606  
D.B. 686-201

FAIRMONT COURT  
Replat -  
Rec. 17-122

10901  
5.000 AC.  
LND. 42-188  
REC. 19-36  
REC. 27-65

FAIRVIEW COURT

10902  
6.723 AC.  
LND. 10-76  
LND. 36-163  
LND. 42-188  
REC. 19-36  
REC. 27-65

FAIRMONT COURT

10902  
6.723 AC.  
LND. 10-76  
LND. 36-163  
LND. 42-188  
REC. 19-36  
REC. 27-65

FAIRMONT COURT

10902  
6.723 AC.  
LND. 10-76  
LND. 36-163  
LND. 42-188  
REC. 19-36  
REC. 27-65

FAIRMONT COURT

10902  
6.723 AC.  
LND. 10-76  
LND. 36-163  
LND. 42-188  
REC. 19-36  
REC. 27-65

FAIRMONT COURT

10902  
6.723 AC.  
LND. 10-76  
LND. 36-163  
LND. 42-188  
REC. 19-36  
REC. 27-65

FAIRMONT COURT

10902  
6.723 AC.  
LND. 10-76  
LND. 36-163  
LND. 42-188  
REC. 19-36  
REC. 27-65

FAIRMONT COURT

10902  
6.723 AC.  
LND. 10-76  
LND. 36-163  
LND. 42-188  
REC. 19-36  
REC. 27-65

FAIRMONT COURT

10902  
6.723 AC.  
LND. 10-76  
LND. 36-163  
LND. 42-188  
REC. 19-36  
REC. 27-65

FAIRMONT COURT

10902  
6.723 AC.  
LND. 10-76  
LND. 36-163  
LND. 42-188  
REC. 19-36  
REC. 27-65

FAIRMONT COURT

10902  
6.723 AC.  
LND. 10-76  
LND. 36-163  
LND. 42-188  
REC. 19-36  
REC. 27-65

FAIRMONT COURT

10902  
6.723 AC.  
LND. 10-76  
LND. 36-163  
LND. 42-188  
REC. 19-36  
REC. 27-65

FAIRMONT COURT

10902  
6.723 AC.  
LND. 10-76  
LND. 36-163  
LND. 42-188  
REC. 19-36  
REC. 27-65

FAIRMONT COURT

10902  
6.723 AC.  
LND. 10-76  
LND. 36-163  
LND. 42-188  
REC. 19-36  
REC. 27-65

FAIRMONT COURT

10902  
6.723 AC.  
LND. 10-76  
LND. 36-163  
LND. 42-188  
REC. 19-36  
REC. 27-65

FAIRMONT COURT

10902  
6.723 AC.  
LND. 10-76  
LND. 36-163  
LND. 42-188  
REC. 19-36  
REC. 27-65

FAIRMONT COURT

10902  
6.723 AC.  
LND. 10-76  
LND. 36-163  
LND. 42-188  
REC. 19-36  
REC. 27-65

FAIRMONT COURT

10902  
6.723 AC.  
LND. 10-76  
LND. 36-163  
LND. 42-188  
REC. 19-36  
REC. 27-65

FAIRMONT COURT

10902  
6.723 AC.  
LND. 10-76  
LND. 36-163  
LND. 42-188  
REC. 19-36  
REC. 27-65

FAIRMONT COURT

10902  
6.723 AC.  
LND. 10-76  
LND. 36-163  
LND. 42-188  
REC. 19-36  
REC. 27-65

FAIRMONT COURT

10902  
6.723 AC.  
LND. 10-76  
LND. 36-163  
LND. 42-188  
REC. 19-36  
REC. 27-65

FAIRMONT COURT

10902  
6.723 AC.  
LND. 10-76  
LND. 36-163  
LND. 42-188  
REC. 19-36  
REC. 27-65

FAIRMONT COURT

10902  
6.723 AC.  
LND. 10-76  
LND. 36-163  
LND. 42-188  
REC. 19-36  
REC. 27-65

FAIRMONT COURT

10902  
6.723 AC.  
LND. 10-76  
LND. 36-163  
LND. 42-188  
REC. 19-36  
REC. 27-65

FAIRMONT COURT

ANNEXATIONS:  
REC. BK. 12 pg. 8  
REC. BK. 15 pg. 74  
REC. BK. 15 pg. 117

REPLATS  
REC. 16-73 - 1L 7671  
REC. 16-88 - 1L 7704 thru 7735  
REC. 17-41 - 1L 8022 thru 8042  
REC. 17-61 - 1L 8127 & 8128  
REC. 17-78 - 1L 8168  
REC. 17-85 - 1L 8168 & Pt. 1L 8128  
- replatted into 1L 8128  
REC. 17-109 - 1L 8295 thru 8302  
REC. 19-149 - replat of IL 8871

REC. 17-120 (vac. & ded. of R/W)  
REC. 17-121  
REC. 17-123 (Replat)  
REC. 17-122 (Replat)  
REC. 17-147  
REC. 18-116 (Replat of Pt. 6512) - Inlot 8754  
REC. 18-149A  
REC. 18-101, 101A  
REC. 18-147, 147A  
REC. 18-149, 149A  
REC. 19-36 (Annexation)  
REC. 19-128

KINGS TOWER SHOPPING CENTER & BUSINESS PARK  
SECTION 1 REC. 18-101  
SECTION 2 REC. 18-147, 147A (Inlots 8853 & 8854)  
SECTION 3 REC. 18-149 & 149A (Inlots 8864 & 8871)  
Replat of IL 8871 - Rec. 19-149 (Lots 9398-9400)

East Troy, LLC  
05762-8  
Rec. 18-149A

REVISED 6-3-2019 AS