

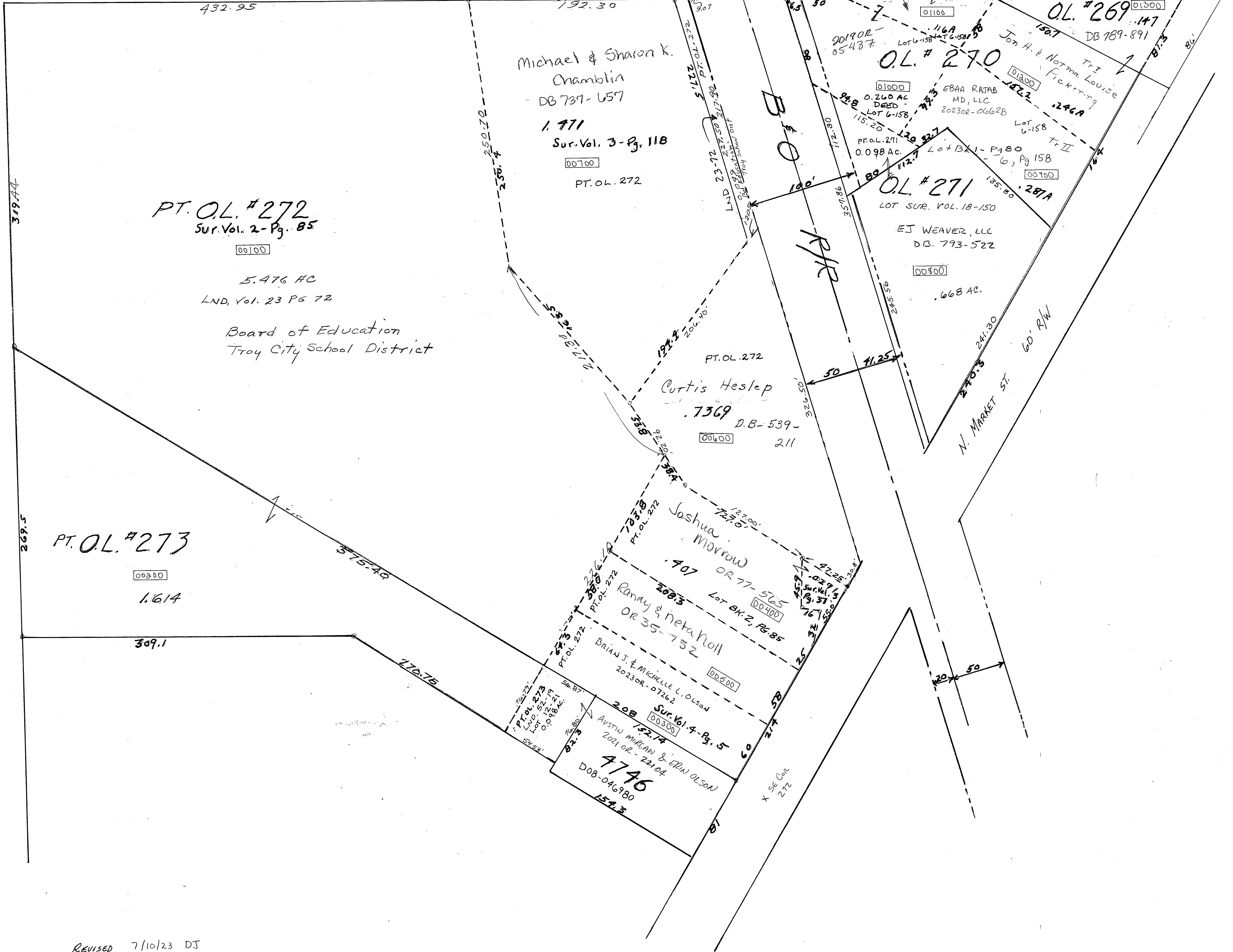
TROY

N.W. SECTION

PLAT NO. 59
Scale 1" = 60 Feet

Recorders Plats
Bk. 4 - Pg. 30
Inlot 4746 - Bk. 8 - Pg. 8
622

PARCEL NUMBER
D08- _____



PT. O.L. #272
Sur. Vol. 2 - Pg. 85
00100

5.476 AC
LND, Vol. 23 Pg 72

Board of Education
Troy City School District

PT. O.L. #273
00200

1.614

Michael & Sharon K.
Chamblin
DB 737-657

1.971
Sur. Vol. 3 - Pg. 118
00700

PT. O.L. 272

Curtis Heslep

.7369
D.B. 539-
00600
211

Joshua
Morrow
OR 77-565
00400

Randy & Meta Holl
OR 35-752
00500

Brian J. & Michelle L. Olson
2023 OR - 07262
2.08
Sur. Vol. 4 - Pg. 5
00300

Austin Marlan & Erin Olson
2021 OL - 22104
4746
D08-046980
1543

O.L. #270
01000
0.260 AC
DEED
LOT 6-158

O.L. #271
LOT SUR. VOL. 18-150
EJ WEAVER, LLC
DB. 793-522
00800
.668 AC.

O.L. #269
01300
DB 189-891

SEE N.W. 63
Jon M. Pickering
OL 496-184

901902-
05437

EBAA RAJAB
MD, LLC
202302-06628

PT. O.L. 271
0.098 AC.

LOT SUR. VOL. 18-150

EJ WEAVER, LLC
DB. 793-522

00800

.668 AC.

50

11.25

50

11.25

50

11.25

50

11.25

50

11.25

50

11.25

50

11.25

50

11.25

50

11.25

50

11.25

50

11.25

50