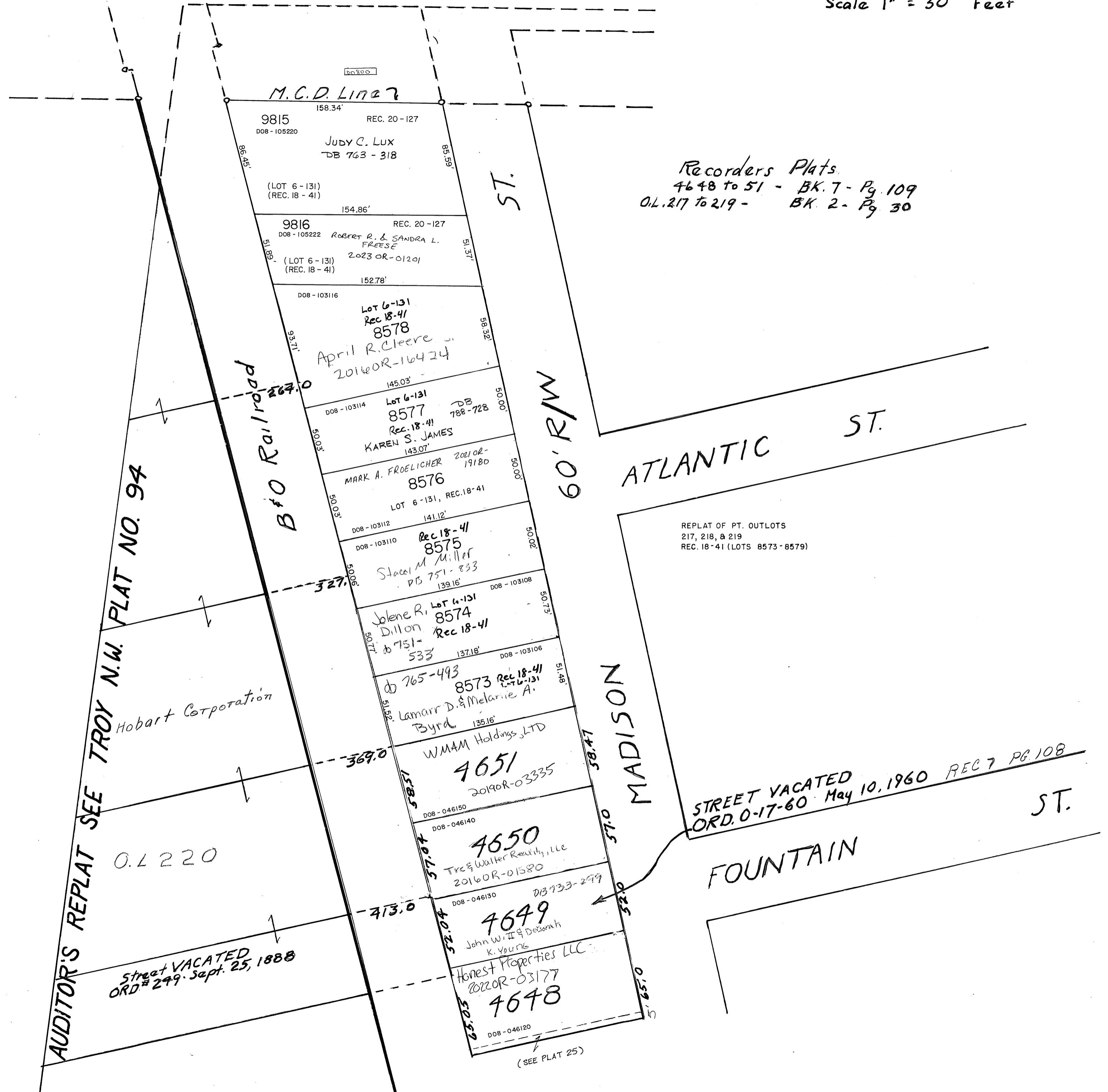


TROY

N.W. SECTION

PLAT NO. 26
Scale 1" = 30 Feet



Recorders Plats
 4648 to 51 - BK. 7 - Pg. 109
 O.L. 217 to 219 - BK. 2 - Pg. 30

REPLAT OF PT. OUTLOTS
 217, 218, & 219
 REC. 18-41 (LOTS 8573-8579)

STREET VACATED
 ORD. 0-17-60 May 10, 1960 REC 7 PG. 108

AUDITOR'S REPLAT SEE TROY N.W. PLAT NO. 94

Hobart Corporation

O.L. 220

Street VACATED
 ORD. # 249. Sept. 25, 1888

(SEE PLAT 25)