

TROY

N.W. SECTION

PLAT NO 23  
Scale 1" = 50' Feet

SMDA NUMBER  
D08-NW023- - - - -

60' R/W (?)

ST

WASHINGTON ST

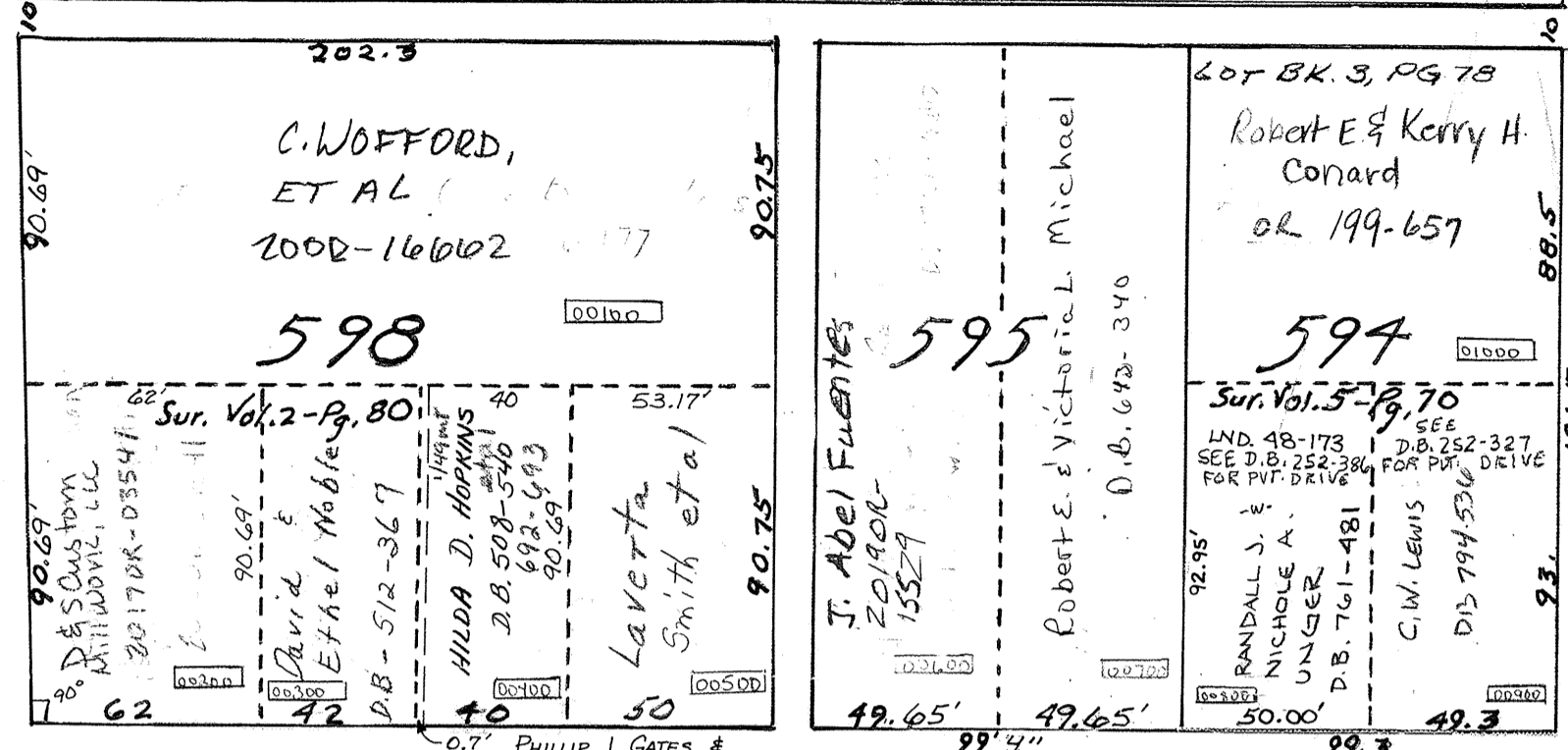
ST

66' R/W

ST 60' R/W

HARRISON

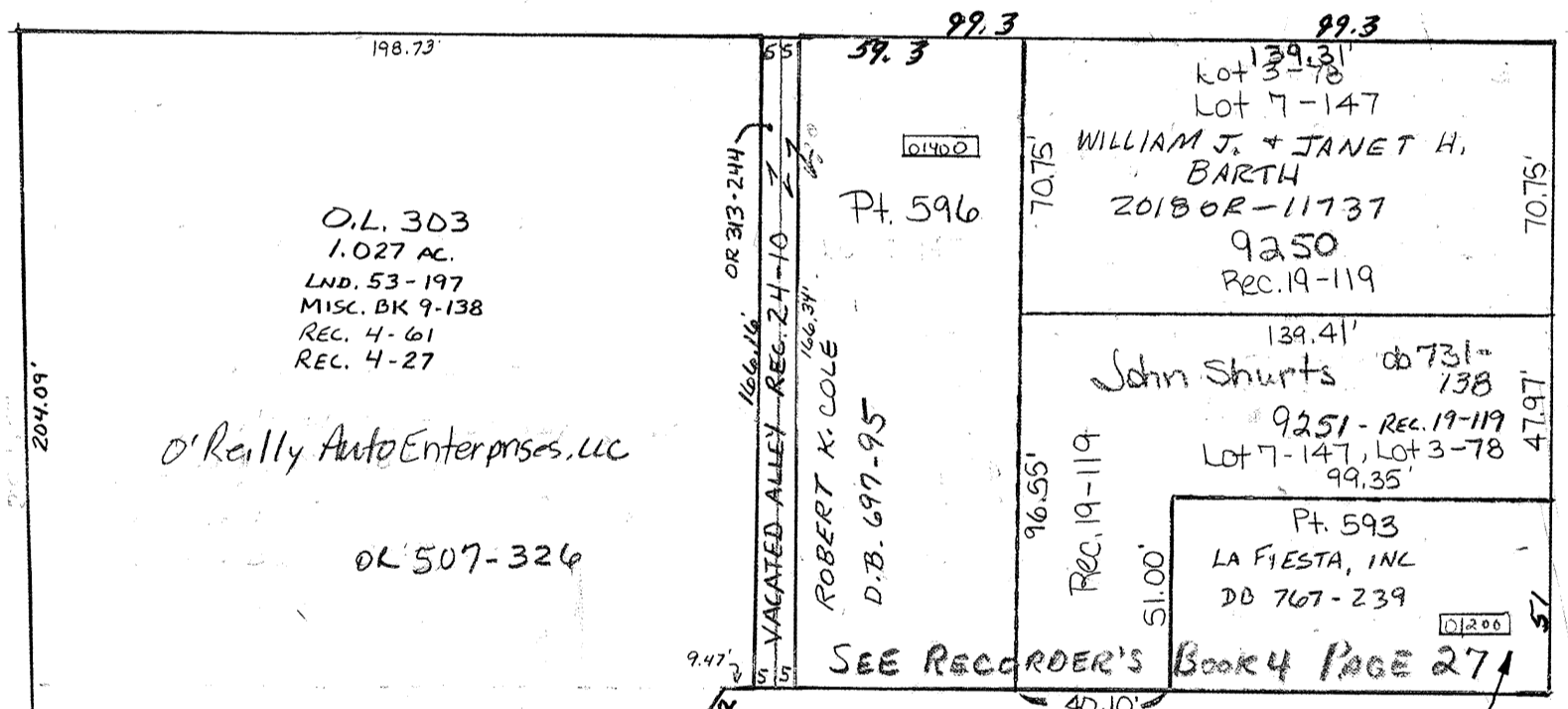
WATER ST.



Recorders Plats  
D.B. 20-Pg. 560

NOTE: THERE APPEARS TO BE SOME DISCREPANCY ABOUT THE WIDTH OF MADISON STREET. THE ORIGINAL PLATTED WIDTH IS 60 FEET; SUBSEQUENT PLATS AND SURVEYS INDICATE 50 FEET WIDTH.

ANDY SMITH MAP DEPT. 3-7-95



MAIN ST.

MADISON

80 R/W

398

SEE TROY N.W. PLAT 24

DRIVEWAY EASE 15  
MISC. BK. 21-786