

TROY

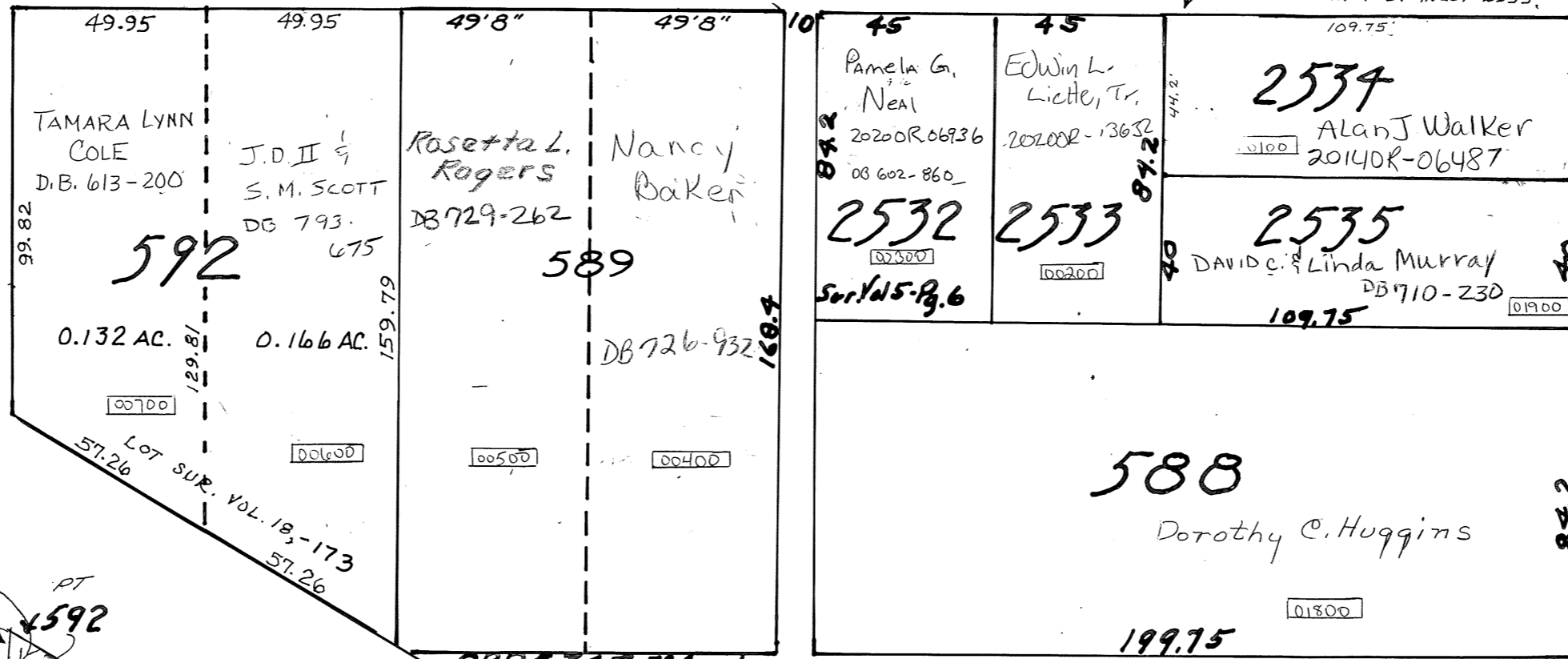
N.W. SECTION

PLAT NO. 14
Scale 1" = 40 feet

PARCEL NUMBER
DOB - _____

HARRISON ST. 60' R/W

WASHINGTON ST. 66' R/W



NOTE: D.B. 169-165 GRANTS AN EASEMENT FOR ALLEY PURPOSES 9' WIDE OFF THE WEST SIDE OF INLOT 2534 FOR THE BENEFIT OF INLOT 2535.

Recorders Plats
 274-275 - D.B. 17 - Pg. 508
 388 - Plat Bk. 1 - Pg. 11
 588-89-92 - D.B. 20 - Pg. 560
 2451-2456 Plat Bk. 3 - Pg. 79
 2532-2535 - Plat Bk. 3 - Pg. 94

60' R/W
ELM ST. 15
60' R/W

D.B. 521-210
Sam & E Evelyn Patterson

ORD # 327 79.4
VACATED
OWNERSHIP ?
SEE PLAT NW 24

388
WATER ST.
CEDAR ST. 50' R/W



NOTE: LOT 275 - THE ORIGINAL LOT WAS 50' WITH AN UNSPECIFIED ALLEY ALONG THE WEST SIDE OF LOT DEED DATED 1854 - VOL. 30, PG. 282, STARTS THE CHAIN OF DISCRPTIONS ALWAYS SELLING A 34' STRIP OFF THE EAST SIDE OF THE LOT.