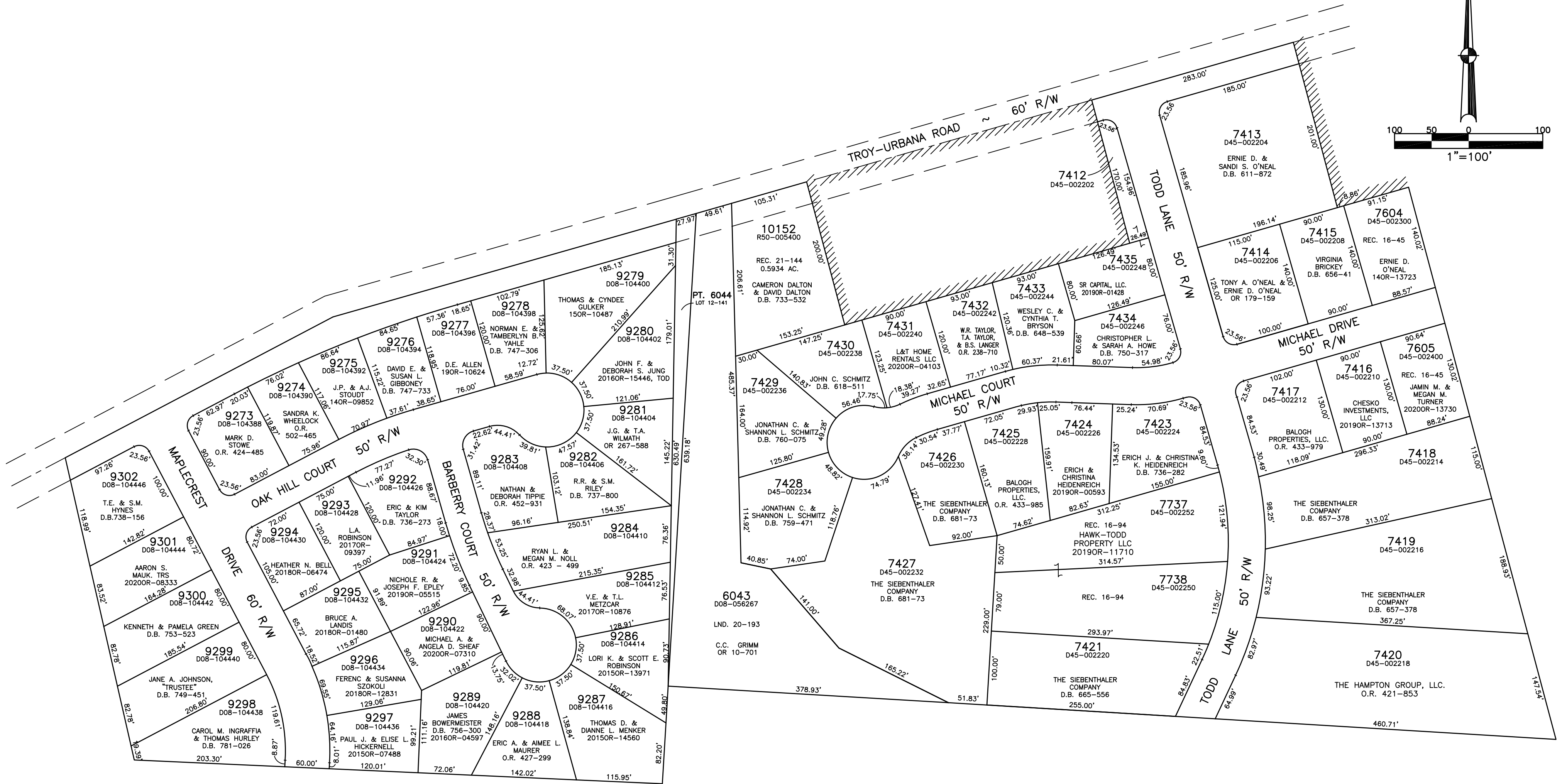
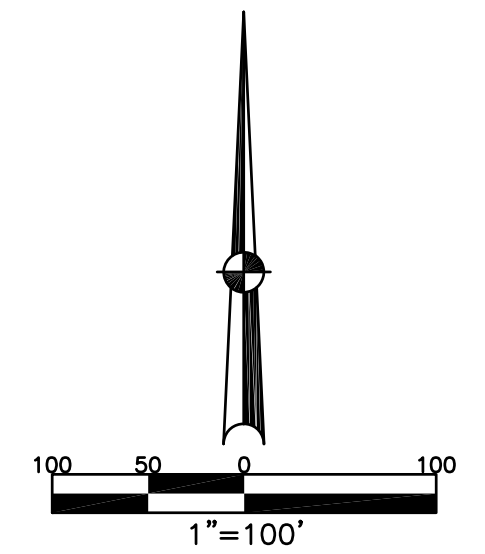


SECTION 12
TOWN 1
RANGE 10

CITY OF TROY
MIAMI COUNTY, OHIO

PARCEL ID NUMBER
DX-
R50-

PLAT NE 85



ABBREVIATION LEGEND	LINE LEGEND	SURVEY INDEX
2014OR-07759 = RECORDER'S DOCUMENT NUMBER	Blow-up Boundary	LOT 12-141
O.R. 72-729 = OFFICIAL RECORD 72 PAGE 729	Property Line	LND. 20-193
D.B. 613-172 = DEED BOOK 613, PAGE 172	Lot Split Line	REC. 10-110
REC. 15-72 = RECORDER'S PLAT BOOK 15, PAGE 72	Section Line	REC. 15-33 (ANNEXATION)
LND. 33-15 = LAND SURVEY VOLUME 33, PAGE 15	Centerline	REC. 15-44 NORTHFIELD SECTION 1
LOT 19-12 = LOT SURVEY VOLUME 19, PAGE 12	Right-of-Way Line	REC. 21-144 (ANNEXATION)
R.R. 8-29 = ROAD RECORD VOLUME 8, PAGE 29	Corporation Line	
R/W = RIGHT OF WAY		
⊕ = CENTERLINE		
AC. = ACRES		
TWP. = TOWNSHIP		
TR. = TRACT		
IL = INLOT		
		REC. 16-45 NORTHFIELD SECTION 2 (Lots 7604 & 7605)
		REC. 16-94 (REPLAT OF 7422)
		MAPLECREST SUBD. REC. 19-131, 131A

PREPARED BY: MIAMI COUNTY ENGINEER'S MAP DEPARTMENT
PAUL P. HUELSKAMP, COUNTY ENGINEER
DATE: JULY 28, 2002
REVISED: September 25, 2020 DSTUMPF