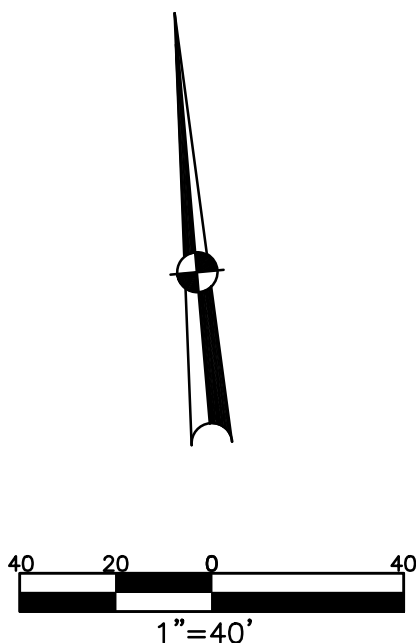


SECTION 12
TOWN 1
RANGE 10



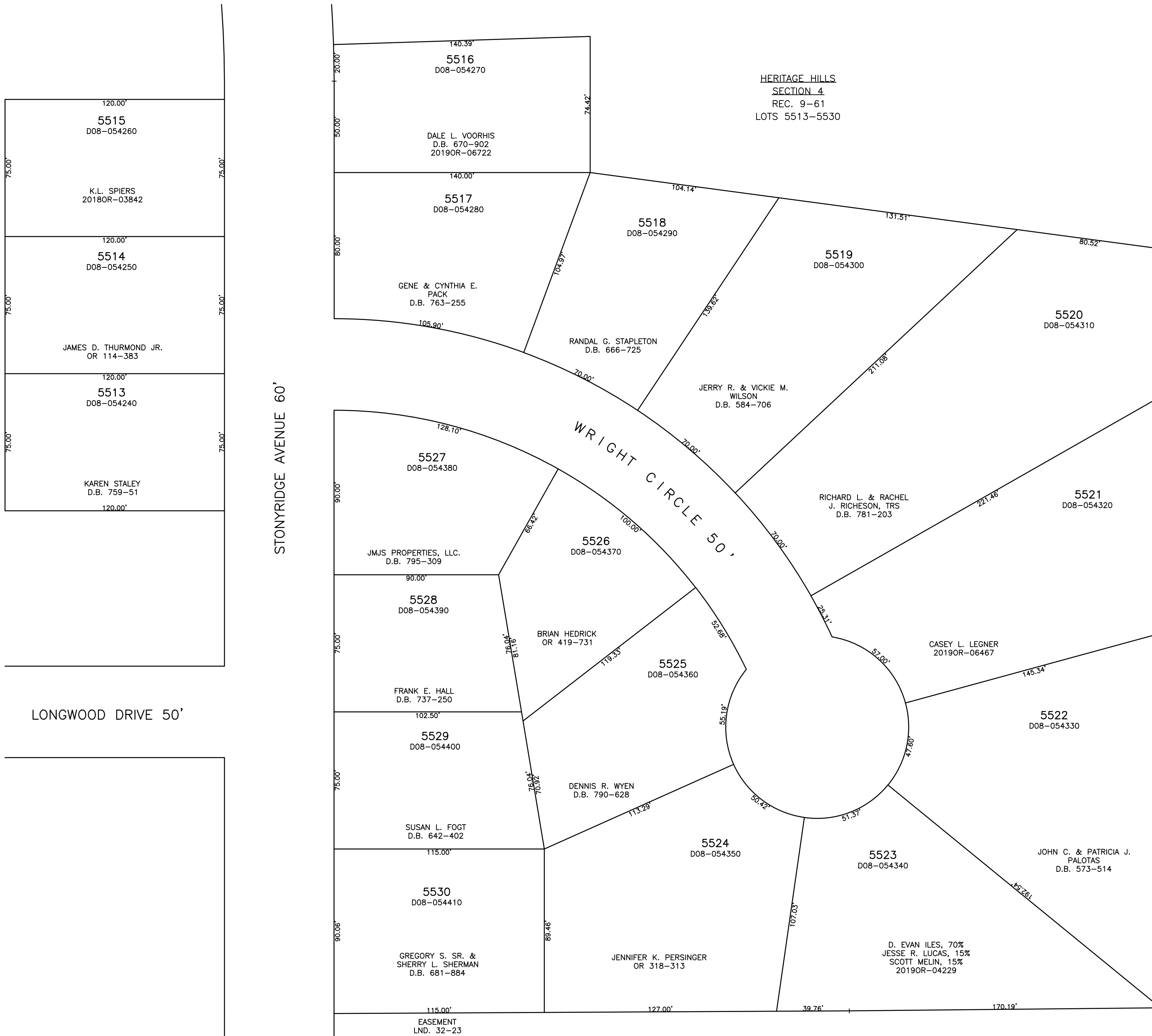
ABBREVIATION LEGEND		
2014OR-07759	=	RECORDER'S DOCUMENT NUMBER
OR 406-509	=	OFFICIAL RECORD 406 PAGE 509
D.B. 613-172	=	DEED BOOK 613, PAGE 172
REC. 15-72	=	RECORDER'S PLAT BOOK 15, PAGE 72
LND. 33-15	=	LAND SURVEY VOLUME 33, PAGE 15
LOT 19-12	=	LOT SURVEY VOLUME 19, PAGE 12
R.R. 8-29	=	ROAD RECORD VOLUME 8, PAGE 29
R/W	=	RIGHT OF WAY
CL	=	CENTERLINE
AC.	=	ACRES
TWP.	=	TOWNSHIP
TR.	=	TRACT
IL	=	INLOT
LINE LEGEND		
	=	Blow-up Boundary
	=	Property Line
	=	Lot Split Line
	=	Section Line
	=	Centerline
	=	Right-of-Way Line
	=	Corporation Line
SURVEY INDEX		
REC. 9-61	LND. 32-23	

PREPARED BY: MIAMI COUNTY ENGINEER'S MAP DEPARTMENT
PAUL P. HUELSKAMP, P.E., P.S., COUNTY ENGINEER
DATE: AUGUST 28, 2014 MB
REVISED: June 21, 2019 DSTUMPF

CITY OF TROY
MIAMI COUNTY, OHIO

PARCEL ID NUMBER
D08-_____

PLAT NE 66



HERITAGE HILLS
SECTION 4
REC. 9-61
LOTS 5513-5530

STONYRIDGE AVENUE 60'

LONGWOOD DRIVE 50'

WRIGHT CIRCLE 50'

EASEMENT
LND. 32-23