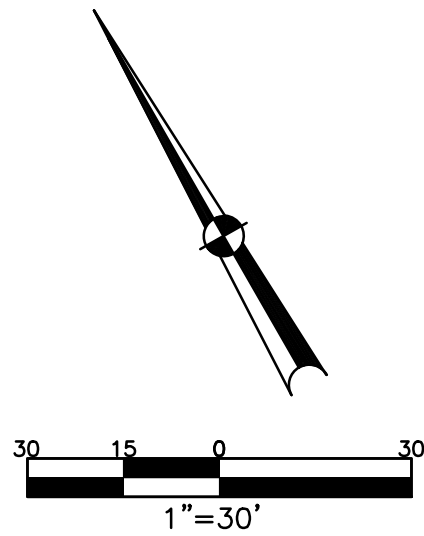


SECTION 27
TOWN 5
RANGE 6

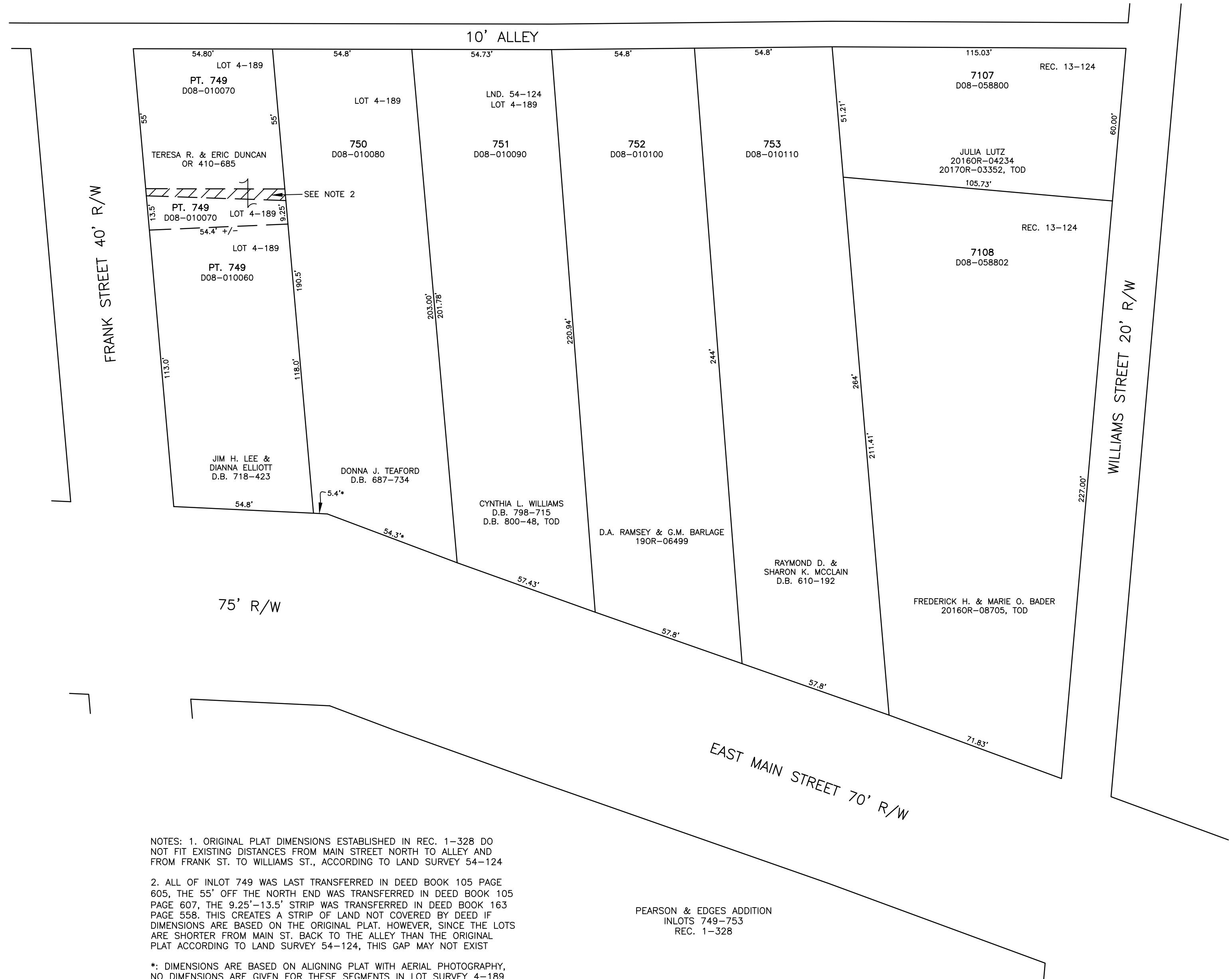
CITY OF TROY
MIAMI COUNTY, OHIO

PARCEL ID NUMBER
D08-_____

PLAT NE 12



ABBREVIATION LEGEND		
20140R-00759	=	RECORDER'S DOCUMENT NUMBER
OR 406-509	=	OFFICIAL RECORD 406 PAGE 509
D.B. 613-172	=	DEED BOOK 613, PAGE 172
REC. 15-72	=	RECORDER'S PLAT BOOK 15, PAGE 72
LND. 33-15	=	LAND SURVEY VOLUME 33, PAGE 15
LOT 19-12	=	LOT SURVEY VOLUME 19, PAGE 12
R.R. 8-29	=	ROAD RECORD VOLUME 8, PAGE 29
R/W	=	RIGHT OF WAY
C	=	CENTERLINE
AC.	=	ACRES
TWP.	=	TOWNSHIP
TR.	=	TRACT
IL	=	INLOT
LINE LEGEND		
	=	Blow-up Boundary
	=	Property Line
	=	Lot Split Line
	=	Section Line
	=	Centerline
	=	Right-of-Way Line
	=	Corporation Line
SURVEY INDEX		
REC. 1-328 REC. 13-124	LOT 4-189	LND. 54-124



NOTES: 1. ORIGINAL PLAT DIMENSIONS ESTABLISHED IN REC. 1-328 DO NOT FIT EXISTING DISTANCES FROM MAIN STREET NORTH TO ALLEY AND FROM FRANK ST. TO WILLIAMS ST., ACCORDING TO LAND SURVEY 54-124

2. ALL OF INLOT 749 WAS LAST TRANSFERRED IN DEED BOOK 105 PAGE 605, THE 55' OFF THE NORTH END WAS TRANSFERRED IN DEED BOOK 105 PAGE 607, THE 9.25'-13.5' STRIP WAS TRANSFERRED IN DEED BOOK 163 PAGE 558. THIS CREATES A STRIP OF LAND NOT COVERED BY DEED IF DIMENSIONS ARE BASED ON THE ORIGINAL PLAT. HOWEVER, SINCE THE LOTS ARE SHORTER FROM MAIN ST. BACK TO THE ALLEY THAN THE ORIGINAL PLAT ACCORDING TO LAND SURVEY 54-124, THIS GAP MAY NOT EXIST

*: DIMENSIONS ARE BASED ON ALIGNING PLAT WITH AERIAL PHOTOGRAPHY, NO DIMENSIONS ARE GIVEN FOR THESE SEGMENTS IN LOT SURVEY 4-189 NOR THE ORIGINAL PLAT 1-328

PEARSON & EDGES ADDITION
INLOTS 749-753
REC. 1-328