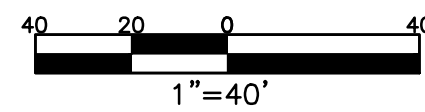
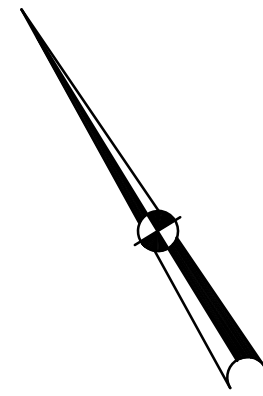


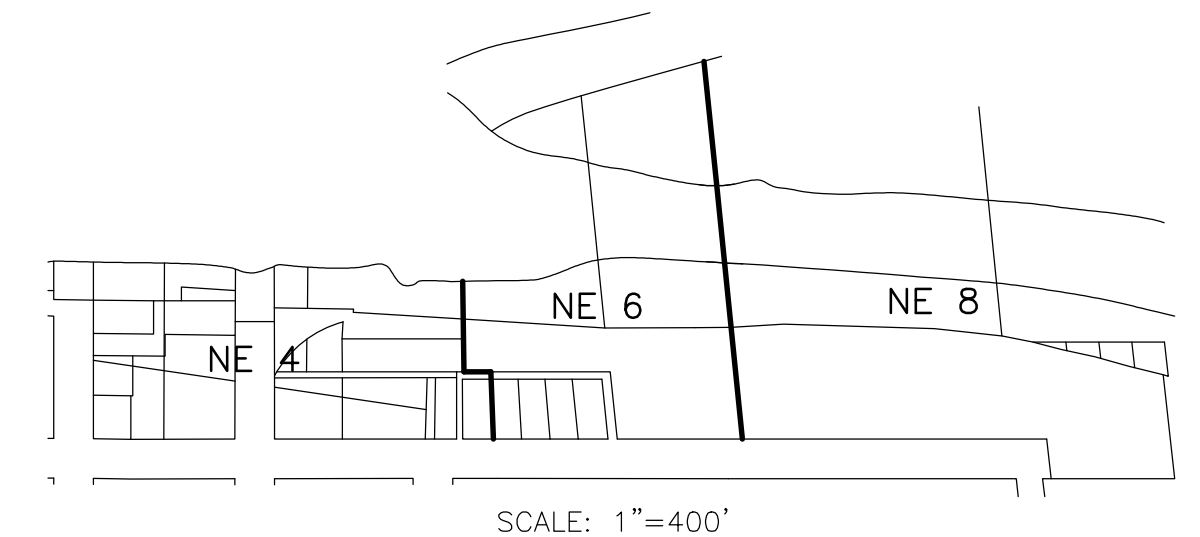
SECTION 23, 27
TOWN 5
RANGE 6

CITY OF TROY
MIAMI COUNTY, OHIO

PARCEL ID NUMBER
D08- PLAT NE 4



ABBREVIATION LEGEND	LINE LEGEND	SURVEY INDEX
2014OR-00759 = RECORDER'S DOCUMENT RECORD	Blow-up Boundary	REC. 2-12
OR 406-509 = OFFICIAL RECORD 406 PAGE 509	Property Line	REC. 16-126
D.B. 613-172 = DEED BOOK 613, PAGE 172	Lot Split Line	LOT 1-30
REC. 15-72 = RECORDER'S PLAT BOOK 15, PAGE 72	Section Line	LOT 8-112
LND. 33-15 = LAND SURVEY VOLUME 33, PAGE 15	Centerline	LOT 16-169
LOT 19-12 = LOT SURVEY VOLUME 19, PAGE 12	Right-of-Way Line	LOT 20-3
R.R. 8-29 = ROAD RECORD VOLUME 8, PAGE 29	Corporation Line	LOT 20-83
R/W = RIGHT OF WAY		LOT 20-133
C = CENTERLINE		LOT 20-134
AC = ACRES		
TWP. = TOWNSHIP		
TR. = TRACT		
IL = INLOT		



PREPARED BY: MIAMI COUNTY ENGINEER'S MAP DEPARTMENT
PAUL P. HUELSKAMP, P.E., P.S., COUNTY ENGINEER
DATE: JULY 20, 2017 CH
REVISED: August 2, 2019 DVENTURA

