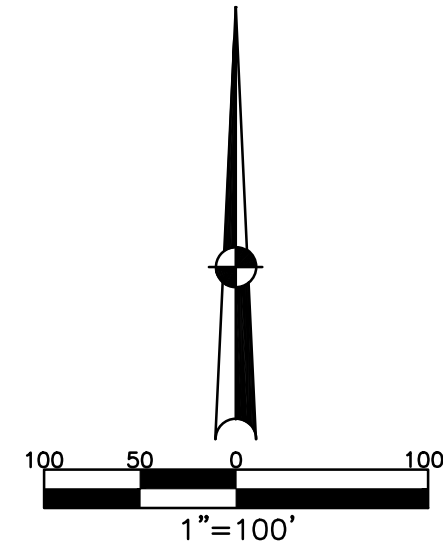


SECTION 9  
TOWN 4  
RANGE 6

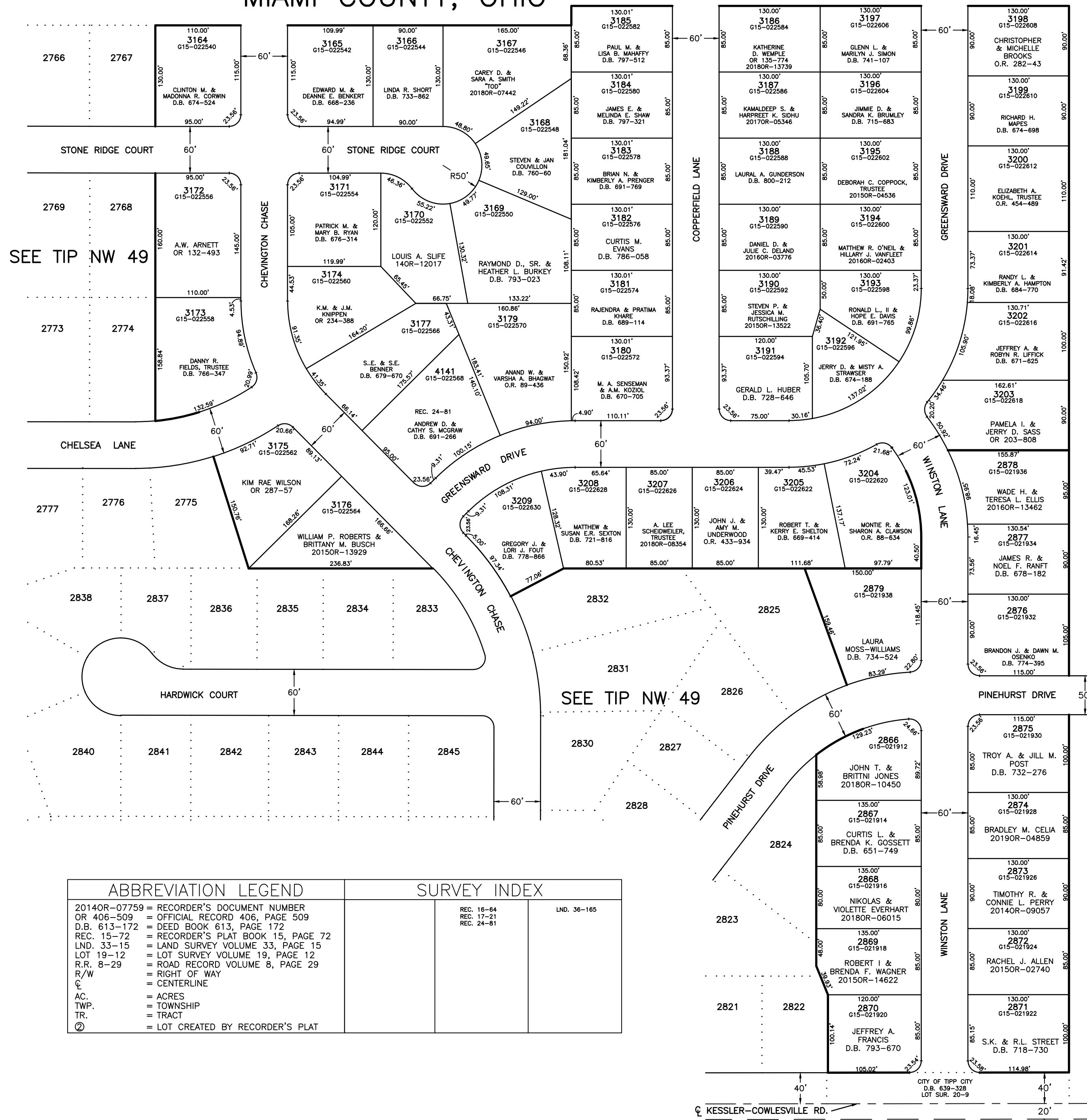
# CITY OF TIPP CITY MIAMI COUNTY, OHIO

PARCEL ID NUMBER  
G15-\_\_\_\_\_

PLAT NW 60



LINE LEGEND	
	Blow-up Boundary
	Property Line
	Lot Split Line
	Section Line
	Centerline
	Right-of-Way Line
	Corporation Line



WINDMERE SUBDIVISION  
SECTION EIGHT  
LOTS 3164-3209  
REC. 17-21

WINDMERE SUBDIVISION  
SECTION FIVE  
LOTS 2866-2879  
REC. 16-64

ABBREVIATION LEGEND		SURVEY INDEX	
2014OR-07759	= RECORDER'S DOCUMENT NUMBER	REC. 16-64	UND. 36-165
OR 406-509	= OFFICIAL RECORD 406, PAGE 509	REC. 17-21	
D.B. 613-172	= DEED BOOK 613, PAGE 172	REC. 24-81	
REC. 15-72	= RECORDER'S PLAT BOOK 15, PAGE 72		
LND. 33-15	= LAND SURVEY VOLUME 33, PAGE 15		
LOT 19-12	= LOT SURVEY VOLUME 19, PAGE 12		
R.R. 8-29	= ROAD RECORD VOLUME 8, PAGE 29		
R/W	= RIGHT OF WAY		
C	= CENTERLINE		
AC.	= ACRES		
TWP.	= TOWNSHIP		
TR.	= TRACT		
Ⓞ	= LOT CREATED BY RECORDER'S PLAT		

PREPARED BY: MIAMI COUNTY ENGINEER'S MAP DEPARTMENT  
PAUL P. HUELSKAMP, P.E., P.S., COUNTY ENGINEER  
DATE: MAY 1993

REVISED: May 15, 2019 DSTUMPF

40' 20' 40' 20'  
KESLER-COWLESVILLE RD.  
CITY OF TIPP CITY  
D.B. 619-328  
LOT SUR. 20-9