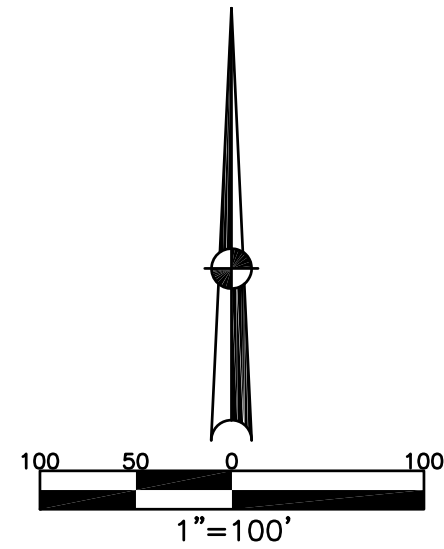


SECTION 9
TOWN 4
RANGE 6



CITY OF TIPP CITY
MIAMI COUNTY, OHIO

PARCEL ID NUMBER
G15-_____

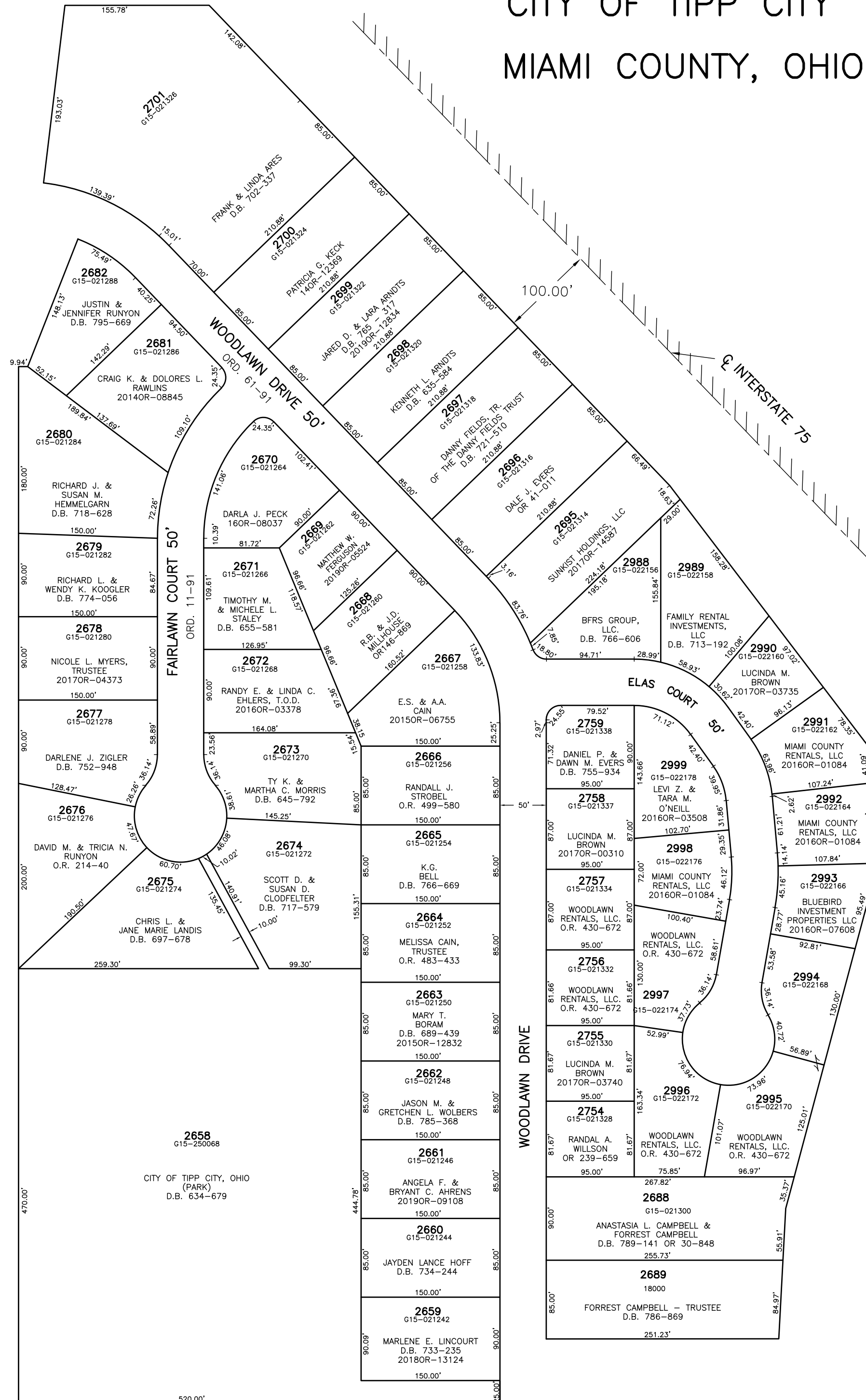
PLAT NW 55

ABBREVIATION LEGEND	
20140R-07759	= RECORDER'S DOCUMENT NUMBER
OR 406-509	= OFFICIAL RECORD 406 PAGE 509
D.B. 613-172	= DEED BOOK 613, PAGE 172
REC. 15-72	= RECORDER'S PLAT BOOK 15, PAGE 72
LND. 33-15	= LAND SURVEY VOLUME 33, PAGE 15
LOT 19-12	= LOT SURVEY VOLUME 19, PAGE 12
R.R. 8-29	= ROAD RECORD VOLUME 8, PAGE 29
R/W	= RIGHT OF WAY
CL	= CENTERLINE
AC.	= ACRES
TWP.	= TOWNSHIP
TR.	= TRACT
Ⓢ	= LOT CREATED BY RECORDER'S PLAT

LINE LEGEND	
	Blow-up Boundary
	Property Line
	Lot Split Line
	Section Line
	Centerline
	Right-of-Way Line
	Corporation Line

SURVEY INDEX

REC. 15-89	
REC. 15-102	
REC. 15-125	
REC. 16-11	
REC. 16-111	



PT. 2615
SEE REC. 15-89
SEE NW 50 FOR THIS AREA

ANNEXATION REC. 15-89

WOODLAWN VILLAGE
SECTION 7
LOTS 2658 THRU 2689
REC. 15-102

LOTS 2683 THRU 2685
REPLATTED TO LOTS 2694 THRU 2701
REC. 15-125

PART LOTS 2686, 2687, 2694
REPLATTED TO LOTS 2754 THRU 2759
REC. 16-11

PART LOTS 2686, 2687, 2694
REPLATTED TO LOTS 2988 THRU 2999
REC. 16-111

PREPARED BY: MIAMI COUNTY ENGINEER'S MAP DEPARTMENT
PAUL P. HUELSKAMP P.E., P.S., COUNTY ENGINEER
DATE: FEBRUARY 1993

REVISED: November 4, 2019 ASMITH