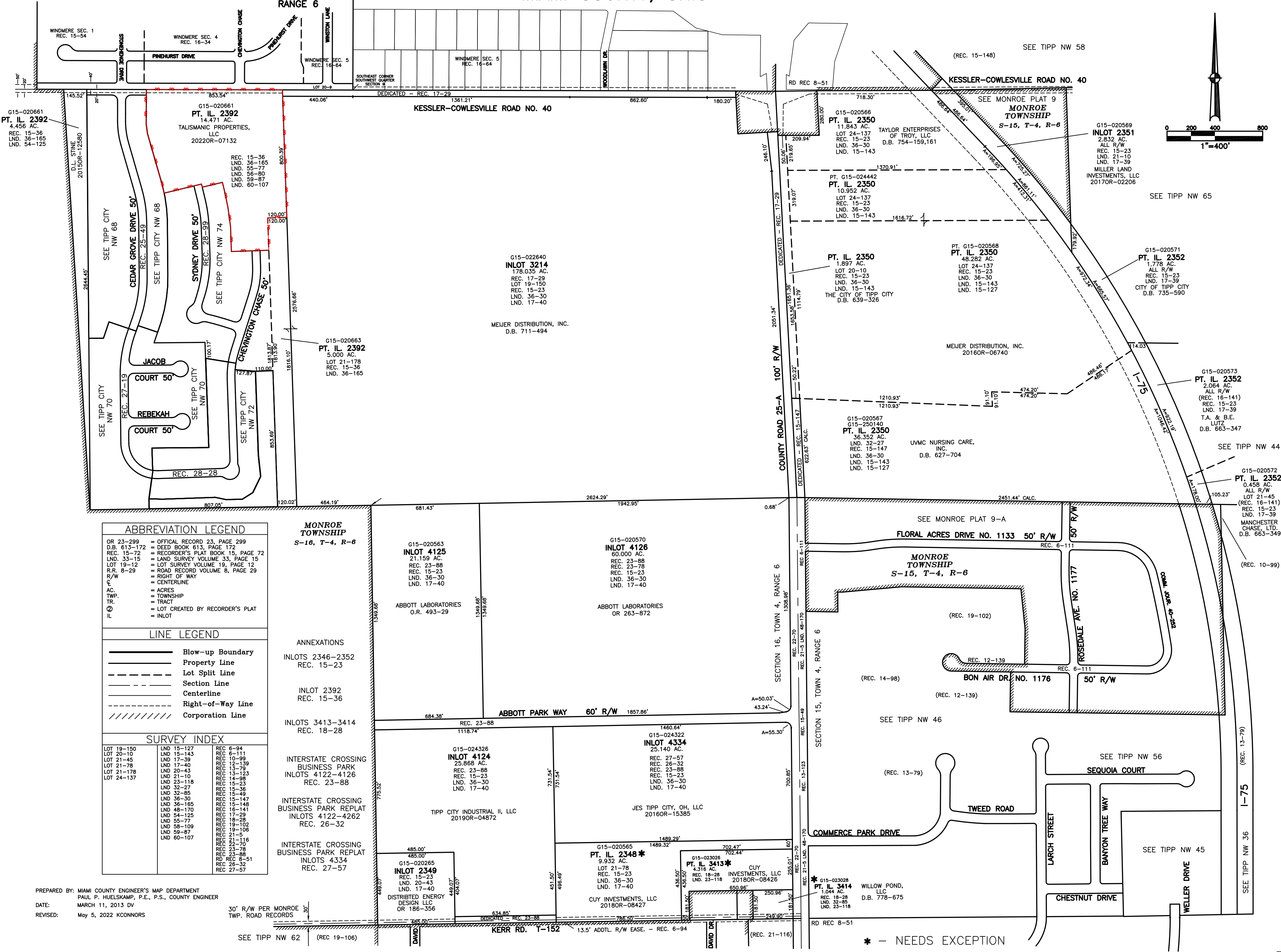
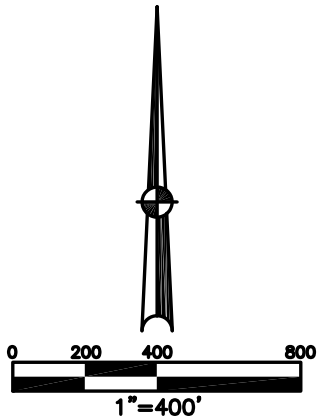


CITY OF TIPP CITY
MIAMI COUNTY, OHIO

PLAT NW 47

SECTION 15 & 16
TOWN 4
RANGE 6



ABBREVIATION LEGEND

OR 23-299	= OFFICIAL RECORD 23, PAGE 299
D.B. 613-172	= DEED BOOK 613, PAGE 172
REC. 15-72	= RECORDER'S PLAT BOOK 15, PAGE 72
LND. 33-15	= LAND SURVEY VOLUME 33, PAGE 15
LOT 19-12	= LOT SURVEY VOLUME 19, PAGE 12
R.R. 8-29	= ROAD RECORD VOLUME 8, PAGE 29
R/W	= RIGHT OF WAY
C.	= CENTERLINE
AC.	= ACRES
TWP.	= TOWNSHIP
TR.	= TRACT
⊙	= LOT CREATED BY RECORDER'S PLAT
IL	= INLOT

LINE LEGEND

	Blow-up Boundary
	Property Line
	Lot Split Line
	Section Line
	Centerline
	Right-of-Way Line
	Corporation Line

SURVEY INDEX

LOT 19-150	LND 15-127	REC 6-94
LOT 20-10	LND 15-143	REC 6-111
LOT 21-45	LND 17-39	REC 10-99
LOT 21-78	LND 17-40	REC 12-139
LOT 21-178	LND 20-43	REC 13-123
LOT 24-137	LND 21-10	REC 14-98
	LND 23-118	REC 15-23
	LND 32-27	REC 15-36
	LND 32-85	REC 15-49
	LND 36-30	REC 15-147
	LND 36-165	REC 16-148
	LND 48-170	REC 16-141
	LND 54-125	REC 17-29
	LND 55-77	REC 18-88
	LND 58-109	REC 19-102
	LND 59-87	REC 19-106
	LND 60-107	REC 21-51
		REC 21-70
		REC 23-78
		REC 24-88
		RD REC 8-51
		REC 27-57

PREPARED BY: MIAMI COUNTY ENGINEER'S MAP DEPARTMENT
PAUL P. HUELSKAMP, P.E., P.S., COUNTY ENGINEER
DATE: MARCH 11, 2013 DV
REVISED: May 5, 2022 KCONNORS

30' R/W PER MONROE TWP. ROAD RECORDS
SEE TIPP NW 62 (REC 19-106)

* - NEEDS EXCEPTION