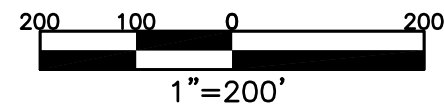


SECTION 15  
TOWN 4  
RANGE 6

CITY OF TIPP CITY  
MIAMI COUNTY, OHIO

PARCEL ID NUMBER  
G15-\_\_\_\_\_

PLAT NW 46



ANNEXATION  
REC. 13-79  
LOTS 2135-2148

ANNEXATION  
REC. 14-98  
LOTS 2253-2255

ANNEXATION  
REC. 19-102  
LOTS 3510-3512

RIESSER INDUSTRIAL PARK  
SECTION 1  
REC. 13-123  
LOTS 2155-2159

SECTION 2  
REC. 15-48  
LOTS 2416-2417

SECTION 3  
REC. 15-49  
LOTS 2418-2419

MONROE TOWNSHIP  
SEC. 15, TOWN 4, RANGE 6

ABBREVIATION LEGEND		
2014OR-07759	=	RECORDER'S DOCUMENT NUMBER
OR 406-509	=	OFFICIAL RECORD 406 PAGE 509
D.B. 613-172	=	DEED BOOK 613, PAGE 172
REC. 15-72	=	RECORDER'S PLAT BOOK 15, PAGE 72
LND. 33-15	=	LAND SURVEY VOLUME 33, PAGE 15
LOT 19-12	=	LOT SURVEY VOLUME 19, PAGE 12
R.R. 8-29	=	ROAD RECORD VOLUME 8, PAGE 29
R/W	=	RIGHT OF WAY
C	=	CENTERLINE
AC.	=	ACRES
TWP.	=	TOWNSHIP
TR.	=	TRACT
IL	=	INLOT

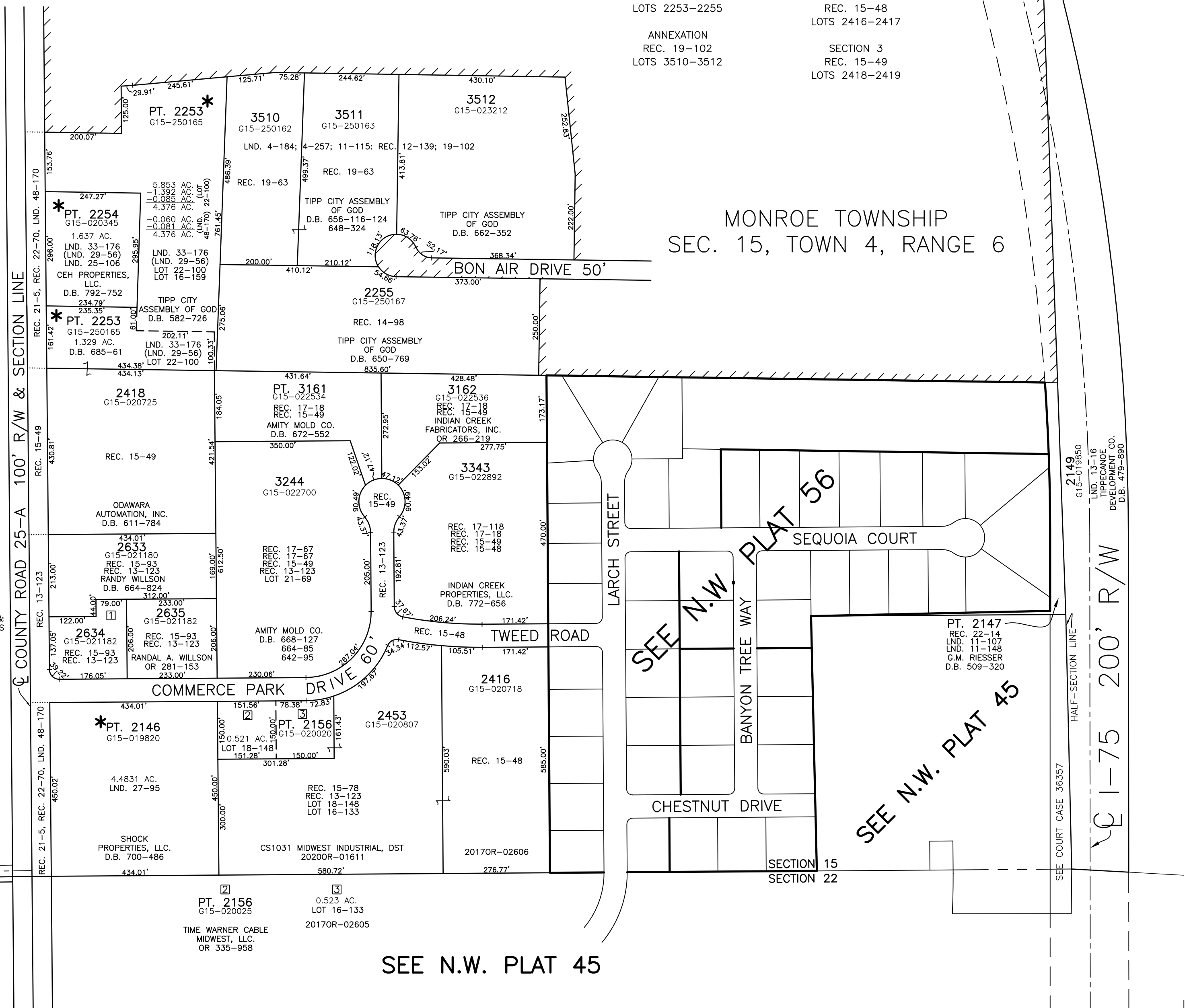
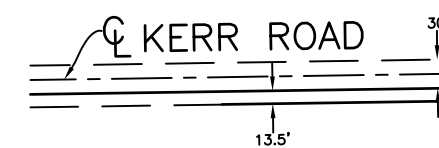
  

LINE LEGEND	
	Blow-up Boundary
	Property Line
	Lot Split Line
	Section Line
	Centerline
	Right-of-Way Line
	Corporation Line

SURVEY INDEX		
REC. 9-145	LOT 16-133	LND. 4-184
REC. 12-139	LOT 18-51	LND. 4-257
REC. 13-123	LOT 18-148	LND. 11-115
REC. 14-98	LOT 21-69	LND. 11-148
REC. 15-48	LOT 22-100	LND. 13-16
REC. 15-49		LND. 16-159
REC. 15-78		LND. 25-106
REC. 15-93		LND. 27-95
REC. 17-18		LND. 29-56
REC. 17-67		LND. 33-176
REC. 17-118		LND. 48-170
REC. 19-63		
REC. 19-102		
REC. 21-5		
REC. 22-70		

\*-NEEDS EXCEPTION



2149  
G15-019950  
LND. 13-16  
TIPPECANOE  
DEVELOPMENT CO.  
D.B. 479-890

SEE N.W. PLAT 56

SEE N.W. PLAT 45

SEE COURT CASE 36357

HALF-SECTION LINE

200' R/W

PREPARED BY: MIAMI COUNTY ENGINEER'S MAP DEPARTMENT  
PAUL P. HUELSKAMP, P.E., P.S., COUNTY ENGINEER  
DATE: MARCH 8, 2018 MDB  
REVISED: February 6, 2020 DSTUMPF

SEE N.W. PLAT 45