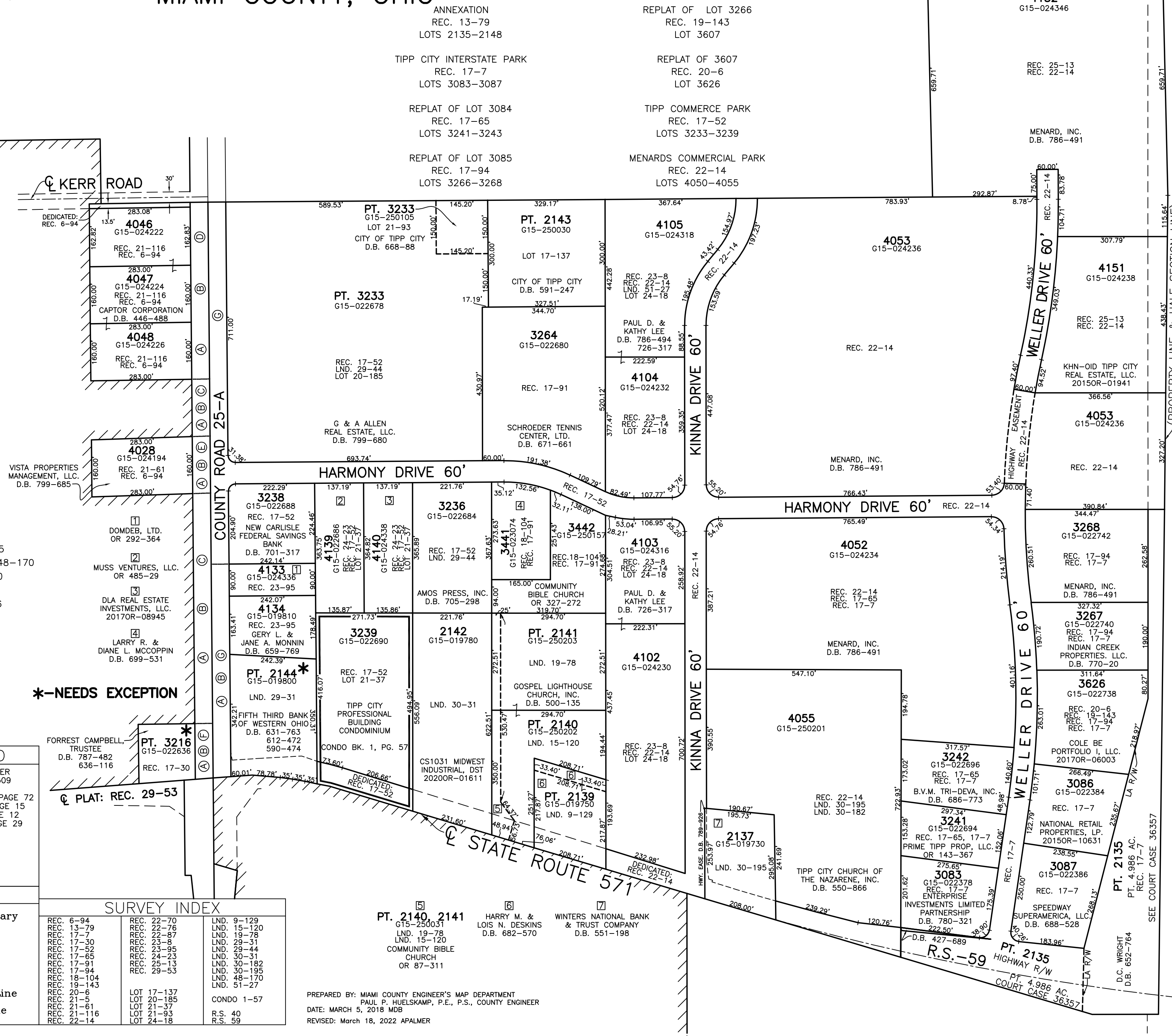
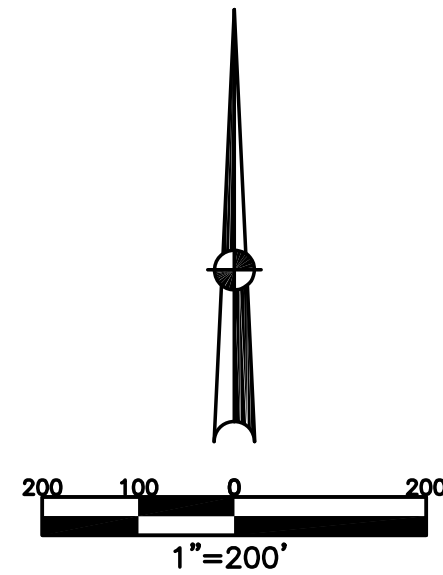


SECTIONS 21 & 22  
TOWN 4  
RANGE 6

CITY OF TIPP CITY  
MIAMI COUNTY, OHIO

PARCEL ID NUMBER  
G15-\_\_\_\_\_

PLAT NW 45



- (A) - CENTERLINE PLAT: REC. 21-5  
R/W ACQUIRED (FEE): LND. 48-170
- (B) - R/W DEDICATED: REC. 22-70
- (C) - R/W ANNEXED: REC. 22-76
- (D) - R/W ANNEXED: REC. 21-116
- (E) - R/W ANNEXED: REC. 21-61
- (F) - R/W ANNEXED: REC. 17-30
- (G) - R/W ANNEXED: REC. 13-79

\*-NEEDS EXCEPTION

ABBREVIATION LEGEND	
2014OR-07759	= RECORDER'S DOCUMENT NUMBER
OR 406-509	= OFFICIAL RECORD 406 PAGE 509
D.B. 613-172	= DEED BOOK 613, PAGE 172
REC. 15-72	= RECORDER'S PLAT BOOK 15, PAGE 72
LND. 33-15	= LAND SURVEY VOLUME 33, PAGE 15
LOT 19-12	= LOT SURVEY VOLUME 19, PAGE 12
R.R. 8-29	= ROAD RECORD VOLUME 8, PAGE 29
R/W	= RIGHT OF WAY
C	= CENTERLINE
AC.	= ACRES
TWP.	= TOWNSHIP
TR.	= TRACT
IL	= INLOT

LINE LEGEND	
	Blow-up Boundary
	Property Line
	Lot Split Line
	Section Line
	Centerline
	Right-of-Way Line
	Corporation Line

SURVEY INDEX		
REC. 6-94	REC. 22-70	LND. 9-129
REC. 13-79	REC. 22-76	LND. 15-120
REC. 17-7	REC. 22-87	LND. 19-78
REC. 17-30	REC. 23-8	LND. 29-31
REC. 17-52	REC. 23-95	LND. 29-44
REC. 17-62	REC. 24-23	LND. 30-31
REC. 17-91	REC. 25-13	LND. 30-182
REC. 17-94	REC. 29-53	LND. 30-195
REC. 18-104		LND. 48-170
REC. 19-143		LND. 51-27
REC. 20-6		
REC. 21-5	LOT 17-137	CONDO 1-57
REC. 21-116	LOT 20-185	
REC. 21-61	LOT 21-37	
REC. 21-116	LOT 21-93	
REC. 22-14	LOT 24-18	

PREPARED BY: MIAMI COUNTY ENGINEER'S MAP DEPARTMENT  
PAUL P. HUELSKAMP, P.E., P.S., COUNTY ENGINEER  
DATE: MARCH 5, 2018 MDB  
REVISED: March 18, 2022 APALMER

(EXCEPTIONS SHOWN-SEE R.S. 40 PT. 2 FOR DETAILS)  
 R/W 200' R/W  
 R.S.-59  
 SEE COURT CASE 36357