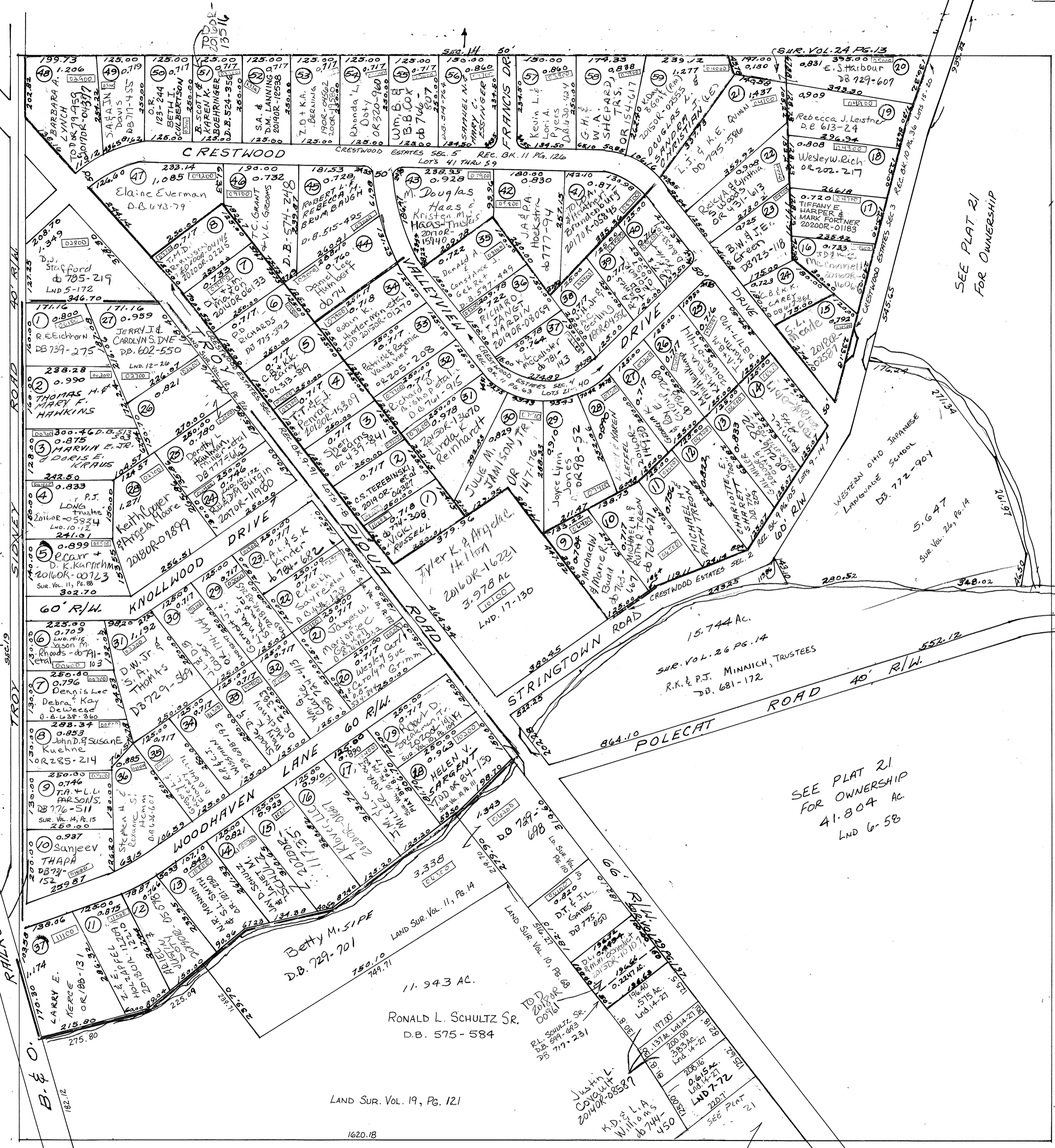


SMDA NUM
K30-ST021A- - - - -



- LAND SUR. VOL. 5, PG. 172 - W. PT. N.W.
- " " " 6 " 58 - S.E. PT. N.W.
- " " " 6 " 62 - N.E. CEN. PT. N.W.
- " " " 7 " 72 - S. CEN. PT. N.W.
- " " " 8 " 6 - S.W. PT. N.W.
- " " " 10 " 12 - W. PT. N.W.
- " " " 10 " 68 - CEN. PT. N.W.
- " " " 10 " 83 - W. PT. N.W.
- " " " 10 " 109 - CEN. PT. N.W.
- " " " 10 " 110 - S. CEN. PT. N.W.
- " " " 10 " 111 - S. CEN. PT. N.W.
- " " " 10 " 172 - CEN. PT. N.W.
- " " " 10 " 174 - S.W. PT. N.W.
- " " " 11 " 14 - S. PT. N.W.
- " " " 11 " 88 - W. CEN. PT. N.W.
- " " " 12 " 26 - N.W. PT. N.W.
- " " " 14 " 15 - S.W. PT. N.W.
- " " " 14 " 27 - S. PT. N.W.
- " " " 17 " 130 - N.W. PT. N.W.
- " " " 19 " 121 - S. PT. N.W.
- " " " 24 " 13 - N.E. PT. N.W.
- " " " 26 " 14 - N.E. PT. N.W.

BROOKSIDE PLAT
REC. BK. 8 PG. 17
* LOTS 1 THRU 37 *
* NOTE LOTS 4, 5, 6, 18,
19, 20, 21, 22, 23, 24, &
27 ARE NOT PART OF
THE BROOKSIDE PLAT
BUT WERE NUMBERED
BY THE COUNTY AUDITOR

- CRESTWOOD ESTATES
SEC. 1 LOTS 1 THRU 8
REC. BK. 9 PG. 91
- CRESTWOOD ESTATES
SEC. 2 LOTS 9 THRU 14
REC. BK. 9 PG. 105
- CRESTWOOD ESTATES
SEC. 3 LOTS 15 THRU 20
REC. BK. 10 PG. 36
- CRESTWOOD ESTATES
SEC. 4 LOTS 21 THRU 40
REC. BK. 11 PG. 63
- CRESTWOOD ESTATES
SEC. 5 LOTS 41 THRU 59
REC. BK. 11 PG. 126

SEE PLAT 21
FOR OWNERSHIP

SEE PLAT 21
FOR OWNERSHIP
41.804 AC.
LND 6-58