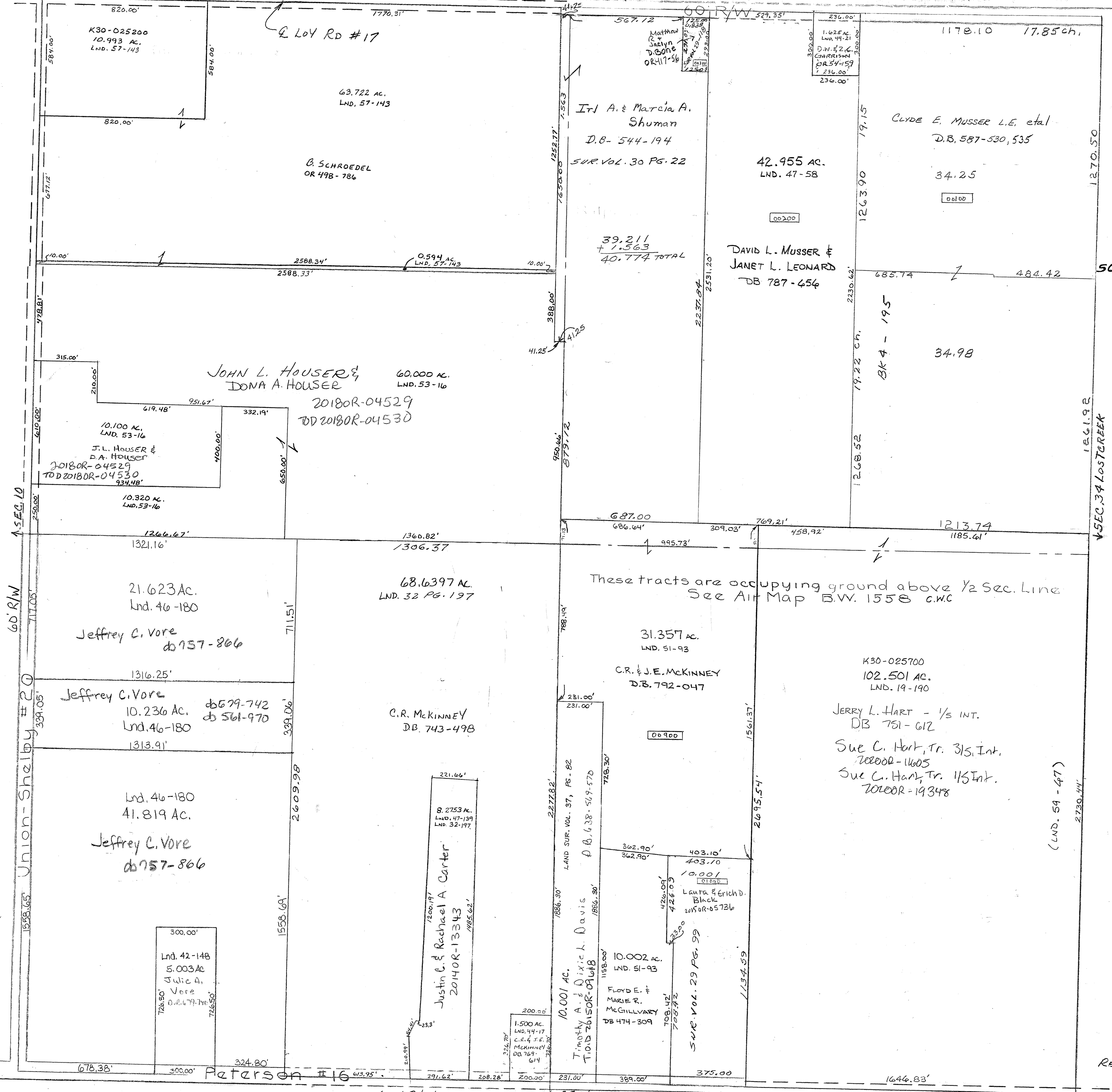


SMDA NUMBER  
K30-ST008

SCALE - 1" = 330'



Vol. 47, Pg. 58 - Cen. Pt. NE QTR.  
Vol. 4 Pg. 195 - E & Cen. Pt. NE  
Lnd. 42-148 S. Cen. Pt. SW QTR.  
Lnd. 46-180 W. Pt. SW QTR.



1/2 SEC. 10

60' R/W

Union-Shelby #20

1558.65'

678.38'

K30-025200  
10.993 AC.  
LND. 57-143

63.722 AC.  
LND. 57-143

B. SCHROEDEL  
OR 498-786

JOHN L. HOUSER &  
DONA A. HOUSER  
20180R-04529  
20180R-04530

10.100 AC.  
LND. 53-16  
J.L. HOUSER &  
D.A. HOUSER  
20180R-04529  
20180R-04530

10.320 AC.  
LND. 53-16

21.623 AC.  
Lnd. 46-180  
Jeffrey C. Vore  
db 757-866

Jeffrey C. Vore  
10.236 AC. db 579-742  
Lnd. 46-180 db 561-970

Lnd. 46-180  
41.819 AC.  
Jeffrey C. Vore  
db 757-866

Lnd. 42-148  
5.003 AC  
Julie A.  
Vore

8.2753 AC.  
LND. 47-139  
LND. 32-197

Justin C. & Rachael A. Carter  
20140R-13343

1.500 AC.  
LND. 44-17  
E.R. & J.E.  
MCKINNEY  
DB 769-614

10.001 AC.  
Timothy A. & Dixie L. Davis  
T.D. 26150R-0908

10.002 AC.  
LND. 51-93  
FLOYD E. &  
MARIE R.  
MCGILLVARY  
DB 474-309

SW 1/4 VOL. 29 PG. 99

31.357 AC.  
LND. 51-93  
C.R. & J.E. MCKINNEY  
DB. 792-047

68.6397 AC.  
LND. 32 PG. 197

These tracts are occupying ground above 1/2 Sec. Line  
See Air Map B.W. 1558 c.w.c.

K30-025700  
102.501 AC.  
LND. 19-190

JERRY L. HART - 1/5 INT.  
DB 751-612  
Sue C. Hart, Tr. 3/5 Int.  
2000R-11605  
Sue C. Hart, Tr. 1/5 Int.  
2010R-19348

Tr. A. & Marcia A.  
Shuman  
D.B. 544-194  
SUR. VOL. 30 PG. 22

42.955 AC.  
LND. 47-58

DAVID L. MUSSER &  
JANET L. LEONARD  
DB 787-454

CLYDE E. MUSSER L.E. et al  
D.B. 587-530, 535

34.25

34.98

BK 4 - 195

(LND. 59-47)

1/2 SEC. 34 LOSTERREEK