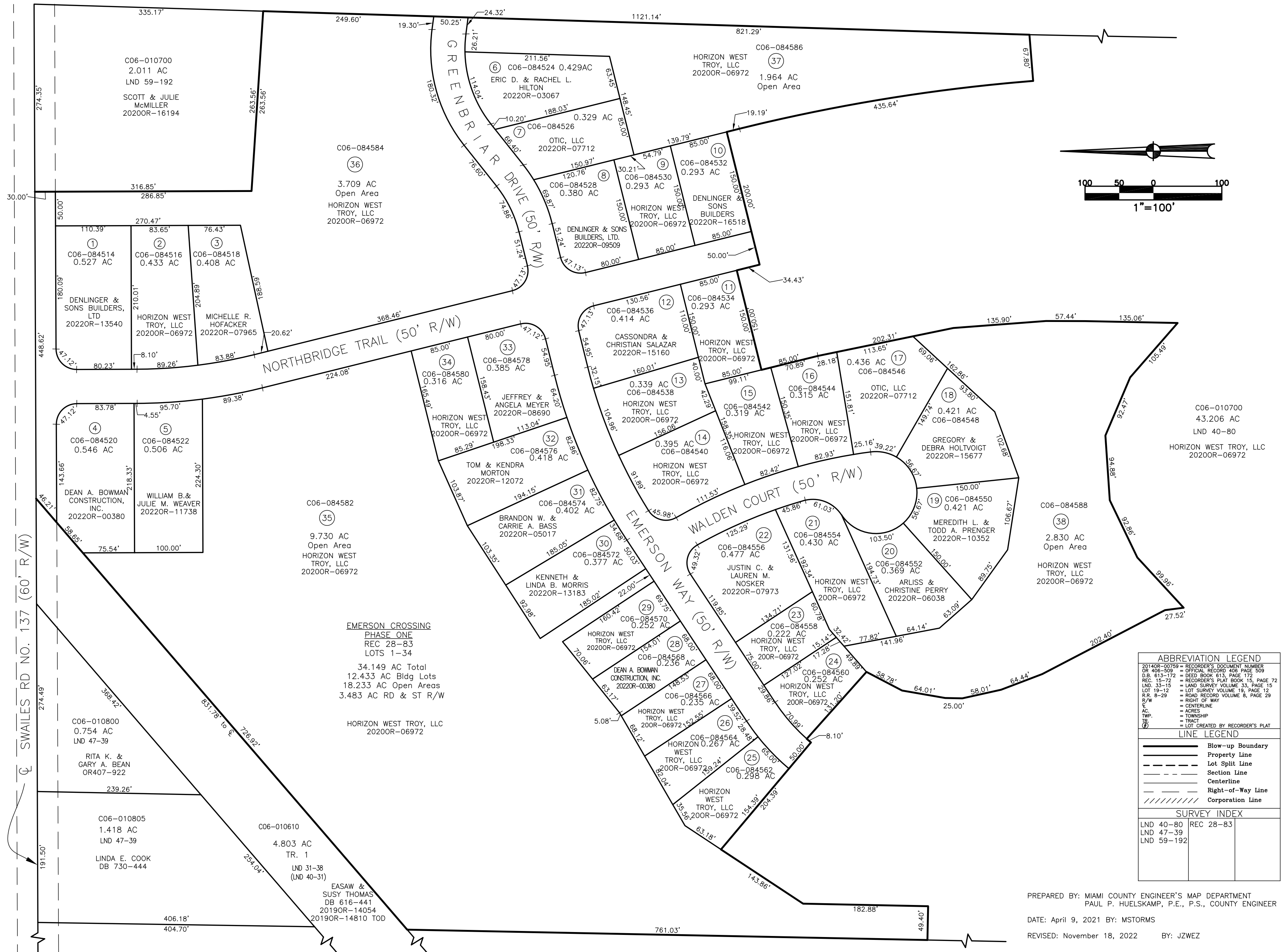


CONCORD TOWNSHIP
MIAMI COUNTY, OHIO

SECTION 6 TOWN 4 RANGE 6
PART of NORTHEAST QUARTER

PARCEL NUMBER
C06-_____

PLAT 9-E



ABBREVIATION LEGEND	
201406-02259	= RECORDER'S DOCUMENT NUMBER
DR 406-509	= OFFICIAL RECORD 406 PAGE 509
D.B. 613-172	= DEED BOOK 613, PAGE 172
REC. 15-72	= RECORDER'S PLAT BOOK 15, PAGE 72
LND. 33-15	= LAND SURVEY VOLUME 33, PAGE 15
LOT 19-12	= LOT SURVEY VOLUME 19, PAGE 12
R.R. 8-29	= ROAD RECORD VOLUME 8, PAGE 29
R/W	= RIGHT OF WAY
C.	= CENTERLINE
AC.	= ACRES
TWP.	= TOWNSHIP
TR.	= TRACT
(C)	= LOT CREATED BY RECORDER'S PLAT

LINE LEGEND	
	Blow-up Boundary
	Property Line
	Lot Split Line
	Section Line
	Centerline
	Right-of-Way Line
	Corporation Line

SURVEY INDEX	
LND 40-80	REC 28-83
LND 47-39	
LND 59-192	

PREPARED BY: MIAMI COUNTY ENGINEER'S MAP DEPARTMENT
PAUL P. HUELSKAMP, P.E., P.S., COUNTY ENGINEER
DATE: April 9, 2021 BY: MSTORMS
REVISED: November 18, 2022 BY: JZWEZ