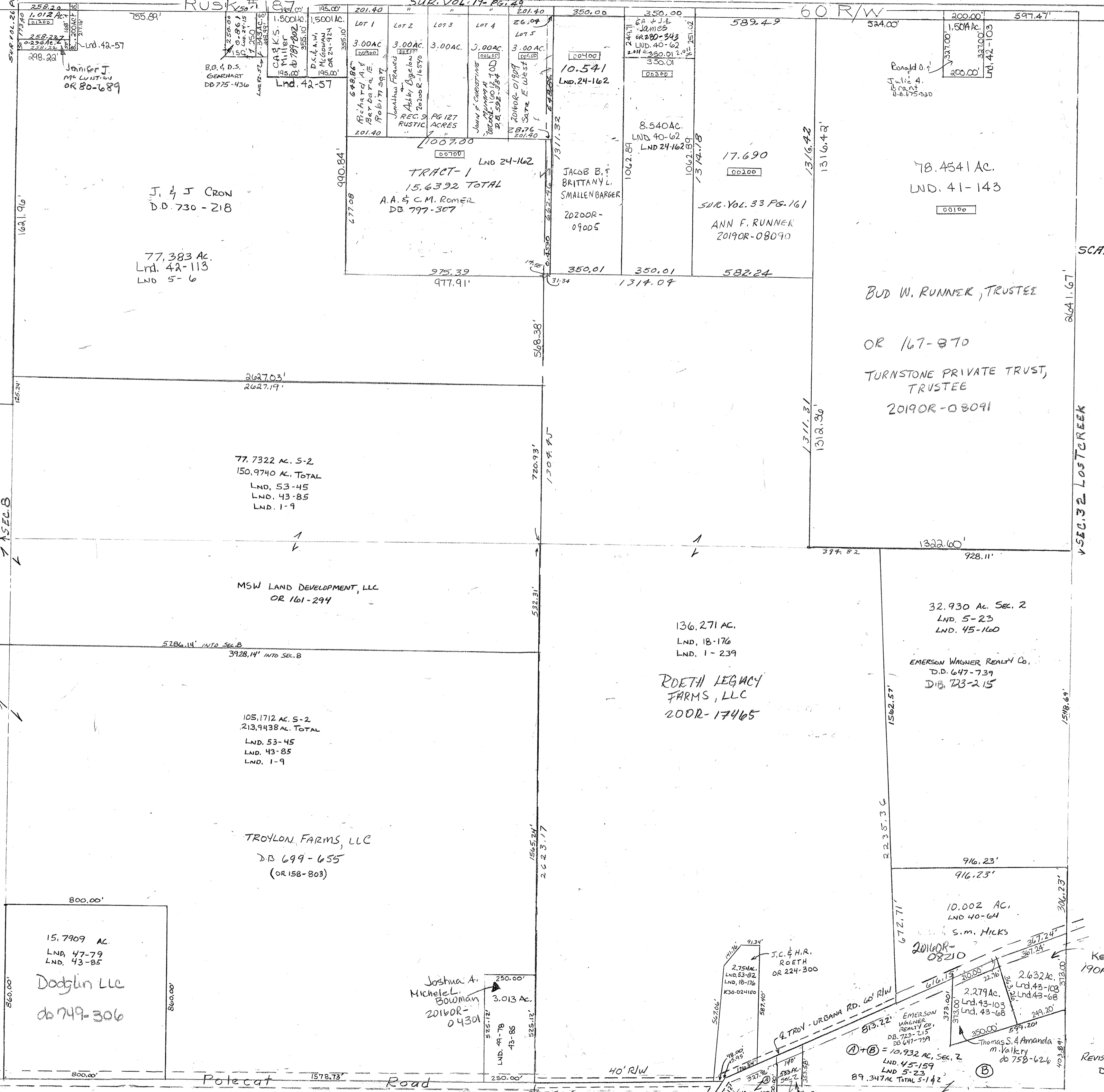


Surveys

Vol. 1 Pg. 9 - W 1/2 Sec
 Vol. 1 Pg. 239 - SE Qtr
 Vol. 5 Pg. 6 - A PT NW
 Vol. 5 Pg. 23 - E side SE

LND. 40-64 SE 1/4
 LND. 41-143 NE 1/4
 LND. 42-57 NW Cor. NW Qtr & N. Cor. Pt. NW Qtr.
 LND. 42-103 NE Cor. NE Qtr.
 LND. 42-113 N. Cor. Pt. NW Qtr.

Lnd. 42-68 SE Pt. SE Qtr.
 Lnd. 43-103 SE Pt. SE Qtr.
 Lnd. 49-78 SE Pt. SW Qtr.



SMDA NUMBER
 K30-ST004

SCALE - 1" = 330



SEC. 32 LOST CREEK

Potocat Road

SEE SEC. 1 FOR OWNERSHIP

REVISED 1-26-2012
 D. VENTURA