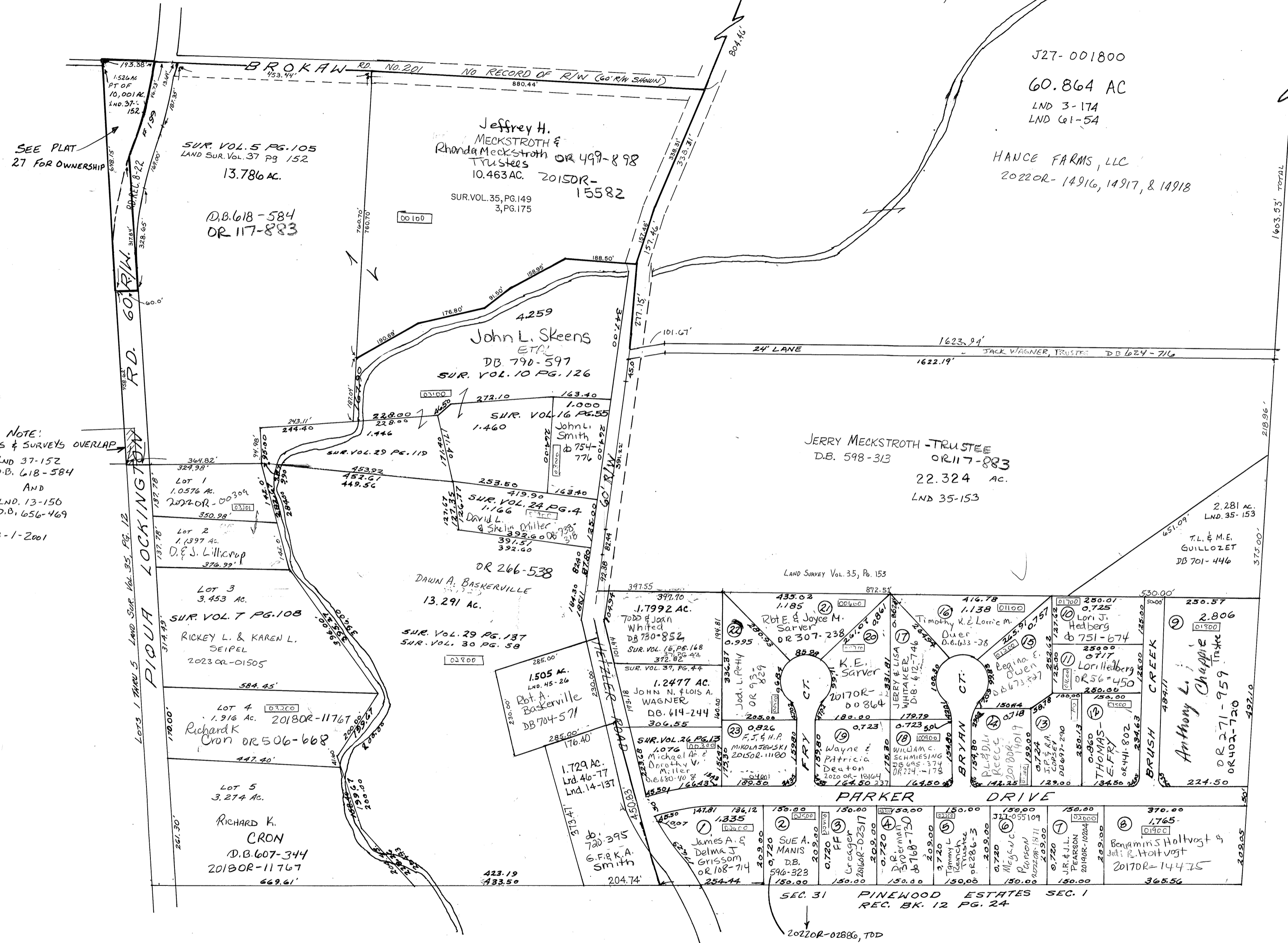


PARCEL NUMBER
J 27 - - - - -

SEE PLAT 27
FOR OVERALL BOUNDARY



SEE PLAT 27 FOR OWNERSHIP

NOTE:
DEEDS & SURVEYS OVERLAP
SEE LND 37-152
D.B. 618-584
AND
LND. 13-156
D.B. 656-469
D.H. 3-1-2001

J27-001800
60.864 AC
LND 3-174
LND 61-54
HANCE FARMS, LLC
2022OR-14916, 14917, & 14918

JERRY MECKSTROTH - TRUSTEE
D.B. 598-313 OR 117-883
22.324 AC.
LND 35-153

2.281 AC.
LND. 35-153
T.L. & M.E. GUILLOZET
DB 701-446

2.806
LND. 35-153
Lori J. Hedberg
DB 751-674
Lori Hedberg
OR 56-450
250.00
0.717
Lorilla Owen
DB 673-737
250.00
150.00
250.00
224.50

2.806
LND. 35-153
Anthony L. Chappie
OR 271-959
OR 402-720
224.50

PARKER DRIVE
SEC. 31 PINWOOD ESTATES SEC. 1
REC. BK. 12 PG. 24
2022OR-02886, TDD