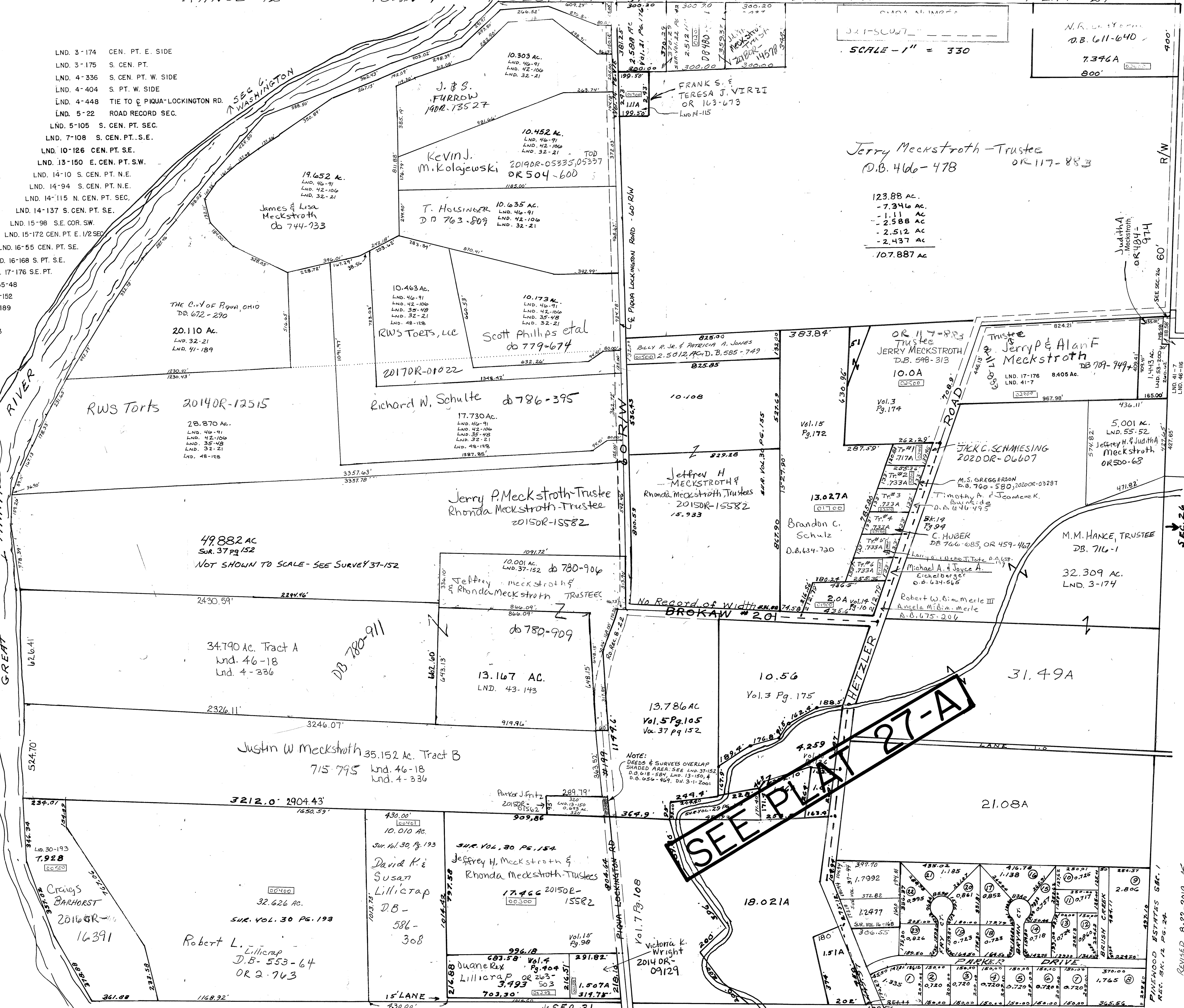


- LND. 3-174 CEN. PT. E. SIDE
- LND. 3-175 S. CEN. PT.
- LND. 4-336 S. CEN. PT. W. SIDE
- LND. 4-404 S. PT. W. SIDE
- LND. 4-448 TIE TO Q Piqua-LOCKINGTON RD.
- LND. 5-22 ROAD RECORD SEC.
- LND. 5-105 S. CEN. PT. SEC.
- LND. 7-108 S. CEN. PT. S.E.
- LND. 10-126 CEN. PT. S.E.
- LND. 13-150 E. CEN. PT. S.W.
- LND. 14-10 S. CEN. PT. N.E.
- LND. 14-94 S. CEN. PT. N.E.
- LND. 14-115 N. CEN. PT. SEC.
- LND. 14-137 S. CEN. PT. S.E.
- LND. 15-98 S.E. COR. SW.
- LND. 15-172 CEN. PT. E. 1/2 SEC.
- LND. 16-55 CEN. PT. S.E.
- LND. 16-168 S. PT. S.E.
- LND. 17-176 S.E. PT.
- D. 35-48
- 37-152
- 41-189
- 7
- 193
- 154

SCALE - 1" = 330

N.R. 611-640
7.346A
800'



Jerry Meckstroth - Trustee
D.B. 466-478 OR 117-883

123.88 AC.
- 7.346 AC.
- 1.11 AC.
- 2.588 AC.
- 2.512 AC.
- 2.437 AC.
107.887 AC

Judith A. Meckstroth
OR 484-974

SEE PLAT 27-A

NOTE:
DEEDS & SURVEYS OVERLAP
SHADED AREA. SEE LND. 37-152,
D.B. 618-584, LND. 13-150, &
D.B. 656-469, DV. 3-1-2001