

1 SHELBY CO.

NOTE: DEEDS MARKED \* ARE DEEDS TO THE TRUSTEES OF SPRING CREEK TWP FOR 20' MEASURED FROM THE E. GEISERMAN ROAD. ALTHOUGH THEY ARE QUIT CLAIM & TRUSTEES DEEDS, WE ARE GOING TO TREAT THEM AS EASEMENTS AS NOT TO NEGATE THE SURVEYS DONE IN THE AREA. ALSO AUDITOR "OK'ED" - NOT TRANSFERRED DEEDS, ALSO INDICATING EASEMENTS. NO TRANSFERS WERE MADE IN THE AUDITOR'S TRANSFER BOOK.

D. VENTURA  
DEP. ENG.  
9-10-2009

Washington Township  
Sec. 33

Kelly A.  
Earhart, Trustee  
DB 735-481

10.001 AC.  
LND 44-156  
Rbt. A.  
Covault  
DB 701-416

15.501 AC.  
LND 51-5  
19-156  
24-121  
15.501 AC.  
LND 51-5  
LND 44-156

1.712 AC.  
LND 59-100  
1.712 AC.  
LND 59-100  
6.14-58  
6.14-58

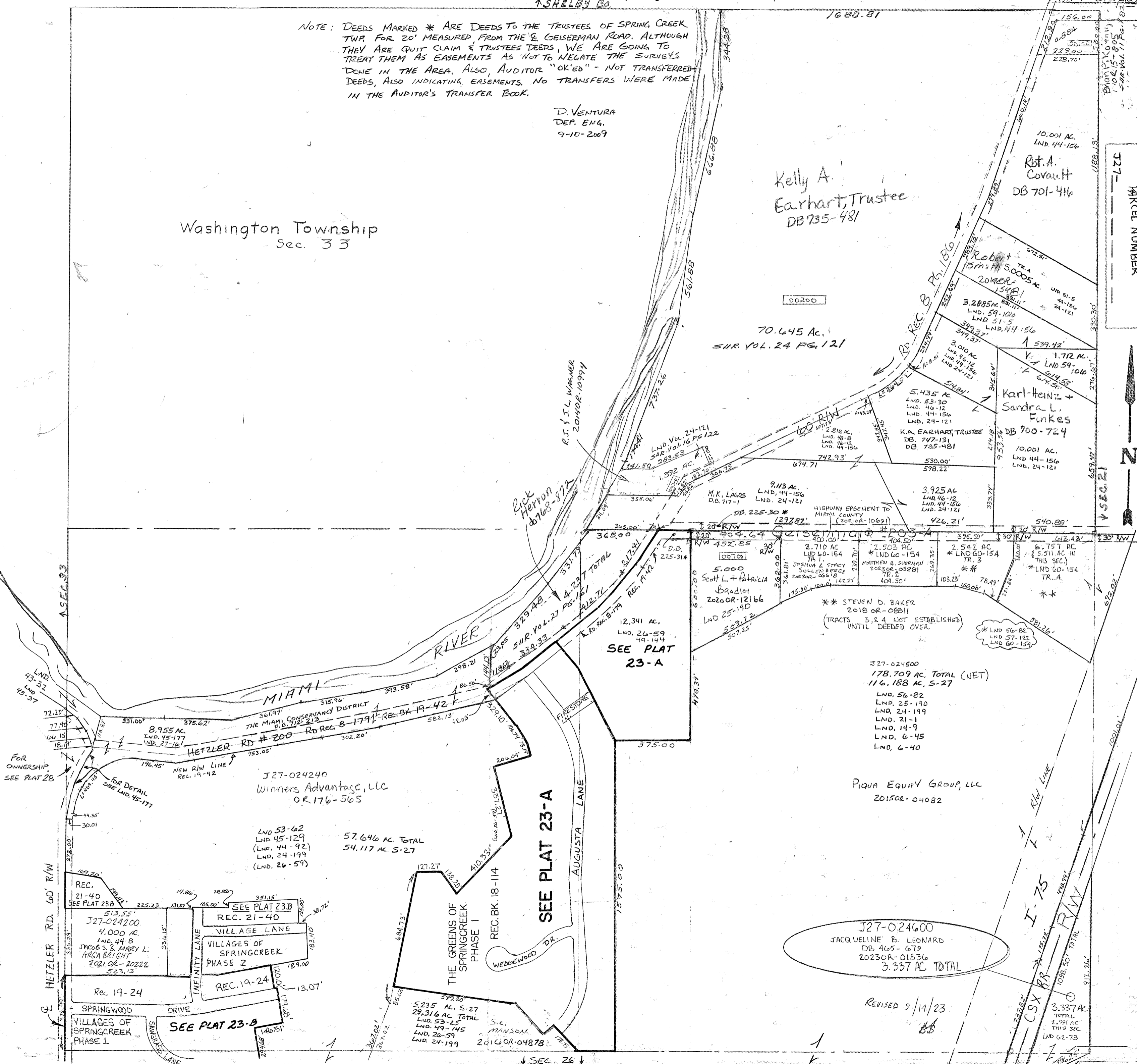
5.435 AC.  
LND 53-30  
LND 46-12  
LND 44-156  
LND 24-121  
K.A. EARHART, TRUSTEE  
DB 747-131  
DB 735-481

10.001 AC.  
LND 44-156  
LND 24-121  
Karl-Heniz +  
Sandra L.  
Funkes  
DB 700-724

3.925 AC.  
LND 46-12  
LND 44-156  
LND 24-121  
426.21'

Surveys -  
Vol. 11 Pg. 182 - NE CORNE  
Vol. 14 Pg. 9 - Cen Pt SE  
Vol. 16 Pg. 122 - S.W. Pt N.E.  
Vol. 62 Pg. 73 - SE Pt SE

Surveys -  
Vol. 2 Pg. 144 - SE Pt SE  
Vol. 6 Pg. 40 - S Cen Pt SE  
Vol. 9 Pg. 45 - S Cen Pt SE  
Vol. 9 Pg. 68 - W Cen Pt SW



SEE PLAT 23-A

SEE PLAT 23-B

J27-024600  
JACQUELINE B. LEONARD  
DB 465-679  
2023OR-01836  
3.337 AC TOTAL

REVISED 9/14/23

3.337 AC  
TOTAL  
2.991 AC  
THIS SEC.  
LND 62-73

PARCEL NUMBER



I-75  
RW LINE  
CSX RR  
RW LINE