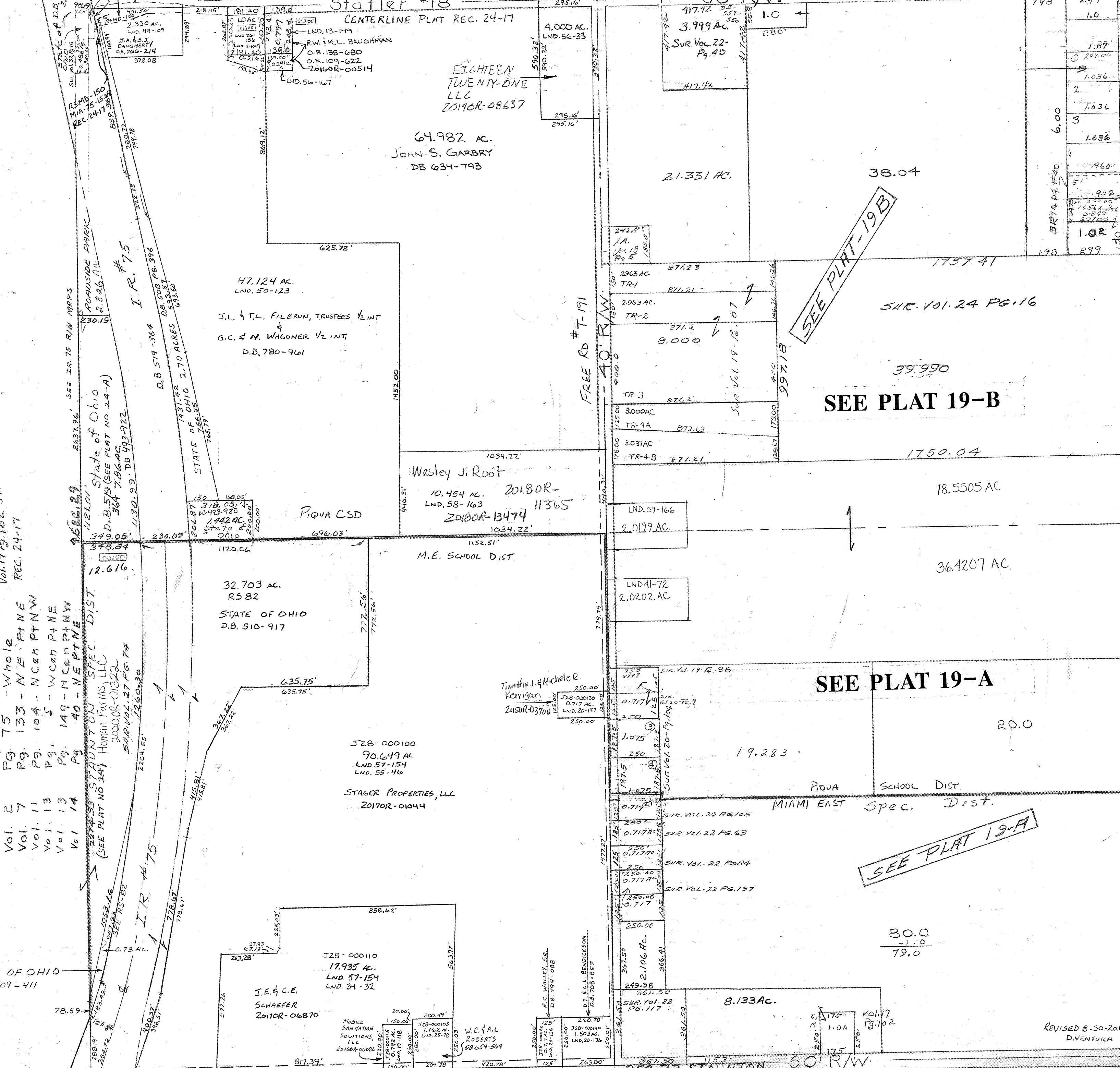


Section 23, Springcreek Township

Stater #18

Range II, Town I



Vol. 17 Pg. 102 S. P. 5 E.  
REC. 24-17

- Surveys - Whole
- Vol. 2 Pg. 75 - Whole
  - Vol. 7 Pg. 133 - NE Pt NE
  - Vol. 11 Pg. 104 - N Cen Pt NW
  - Vol. 13 Pg. 5 - W Cen Pt NE
  - Vol. 13 Pg. 149 - N Cen Pt NW
  - Vol. 14 Pg. 40 - NE Pt NE

2274-23 STAUNTON SPEC. DIST.  
(SEE PLAT NO 24)  
Homan Farms, LLC  
2020OR-01322  
SUR. VOL. 27 PG. 74

STATE OF OHIO  
DB. 509-411

J.E. & C.E.  
SCHAEFER  
2010R-06870

J28-000110  
17.935 AC.  
LND 57-154  
LND. 34-32

STAGER PROPERTIES, LLL  
2010R-01044

J28-000100  
90.649 AC  
LND 57-154  
LND. 55-46

Timothy J. & Michele  
Kerrigan  
2010R-03700

M.E. SCHOOL DIST.

PIQVA CSD

Wesley J. Root  
10.454 AC. 2018OR-11365  
LND. 58-163  
2010R-13474

J.L. & T.L. FILBRUN, TRUSTEES 1/2 INT  
&  
G.C. & N. WAGONER 1/2 INT  
D.B. 780-961

47.124 AC.  
LND. 50-123

64.982 AC.  
JOHN S. GARBRY  
DB 634-793

EIGHTEEN  
TWENTY-ONE  
LLC  
2019OR-08637

4,000 AC.  
LND. 56-33

3.999 AC.  
SUR. VOL. 22  
Pg. 40

21.331 AC.

38.04

SEE PLAT 19-B

SUR. VOL. 24 PG. 16

39.990

1750.04

18.5505 AC

36.4207 AC.

SEE PLAT 19-A

20.0

19.283

PIQVA SCHOOL DIST.  
MIAMI EAST Spec. Dist.

SEE PLAT 19-A

80.0  
-1.0  
79.0

8.133 AC.

Vol. 17  
Pg. 102

SUR. VOL. 7 PG. 133

SMDA NUMBER  
387 SC019

40' R/W

Troy - Sidney #14

40' R/W

60' R/W