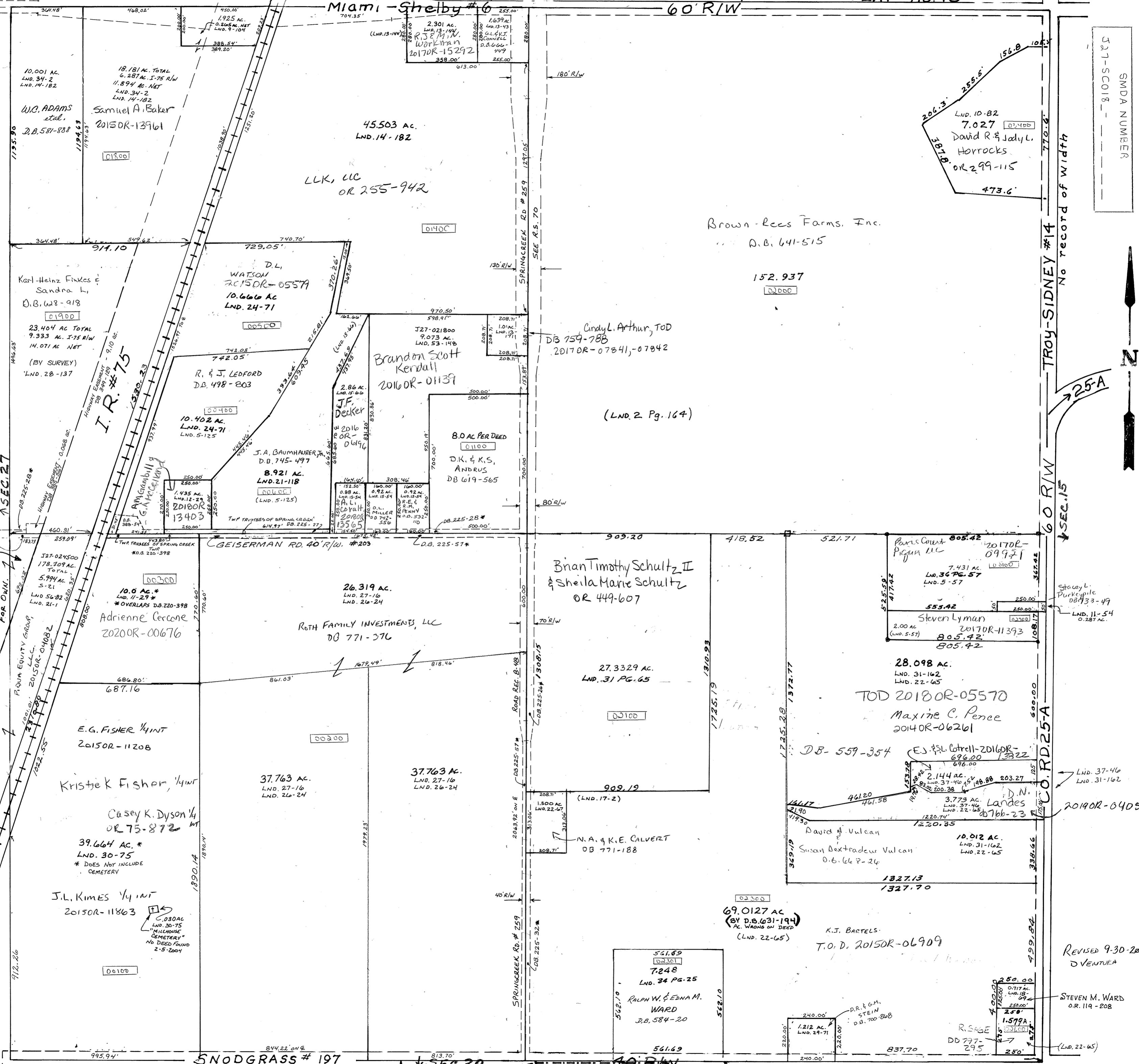


NOTE: DEED REFERENCES MARKED * ARE DEEDS TO THE TRUSTEES OF SPRING CREEK TWP FOR 20 MEASURED FROM THE E. OF GEISERMAN ROAD. ALTHOUGH THEY ARE QUIT CLAIM & TRUSTEES DEEDS, WE ARE GOING TO TREAT THEM AS EASEMENTS AS NOT TO NEGATE THE SURVEYS DONE IN THE AREA. ALSO, AUDITOR OKED - NOT "TRANSFERRED" - DEEDS, ALSO INDICATING EASEMENTS. NO TRANSFERS WERE MADE IN THE AUDITOR'S TRANSFER BOOK. D. VENTURA DEP. ENG. 9-10-2009

- Pg. 11 - N.E. Cor. S.E.
- Pg. 12 - S. Cen. Pt. N.W.
- Pg. 13 - N.E. Cor. N.W.
- Pg. 14 - N.E. Pt. N.W.
- Pg. 15 - E. Cen. Pt. N.W.
- Pg. 16 - N. 1/2 N.W.
- Pg. 17 - S.E. Pt. N.W.
- Pg. 18 - S. Pt. S.E.
- Pg. 19 - S.E. Cor. S.E.
- Pg. 20 - S. Cen. Pt. N.W.
- Pg. 21 - N.E. Cor. N.W.
- Pg. 22 - N.E. Pt. N.W.
- Pg. 23 - E. Cen. Pt. N.W.
- Pg. 24 - N. 1/2 N.W.
- Pg. 25 - S.E. Pt. N.W.
- Pg. 26 - S. Pt. S.E.
- Pg. 27 - S.E. Cor. S.E.



SMDA NUMBER 527-SC018

No record of width

25-A

60 R/W

SEC. 15

TROY-SIDNEY #14

60 R/W

SEC. 25-A

CO. RD. 25-A

REVISOR 9-30-2016 D. VENTURA

STEVEN M. WARD O.R. 119-208

(LND. 22-65)