

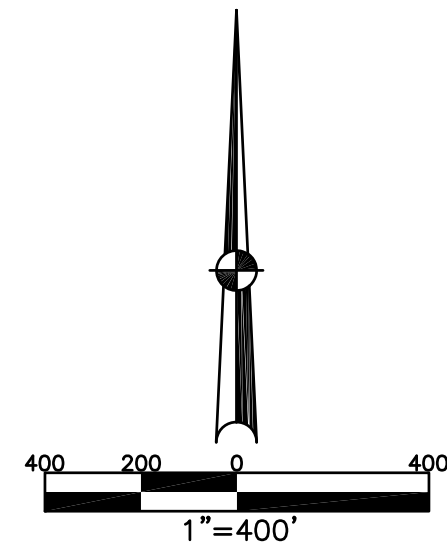
SPRING CREEK TWP.  
MIAMI COUNTY, OHIO

SECTION 17 TOWN 1 RANGE 11

SMDA NUMBER  
J28-SC014-\_\_\_\_\_

SMDA NUMBER  
J27-SC014-\_\_\_\_\_

PLAT 14

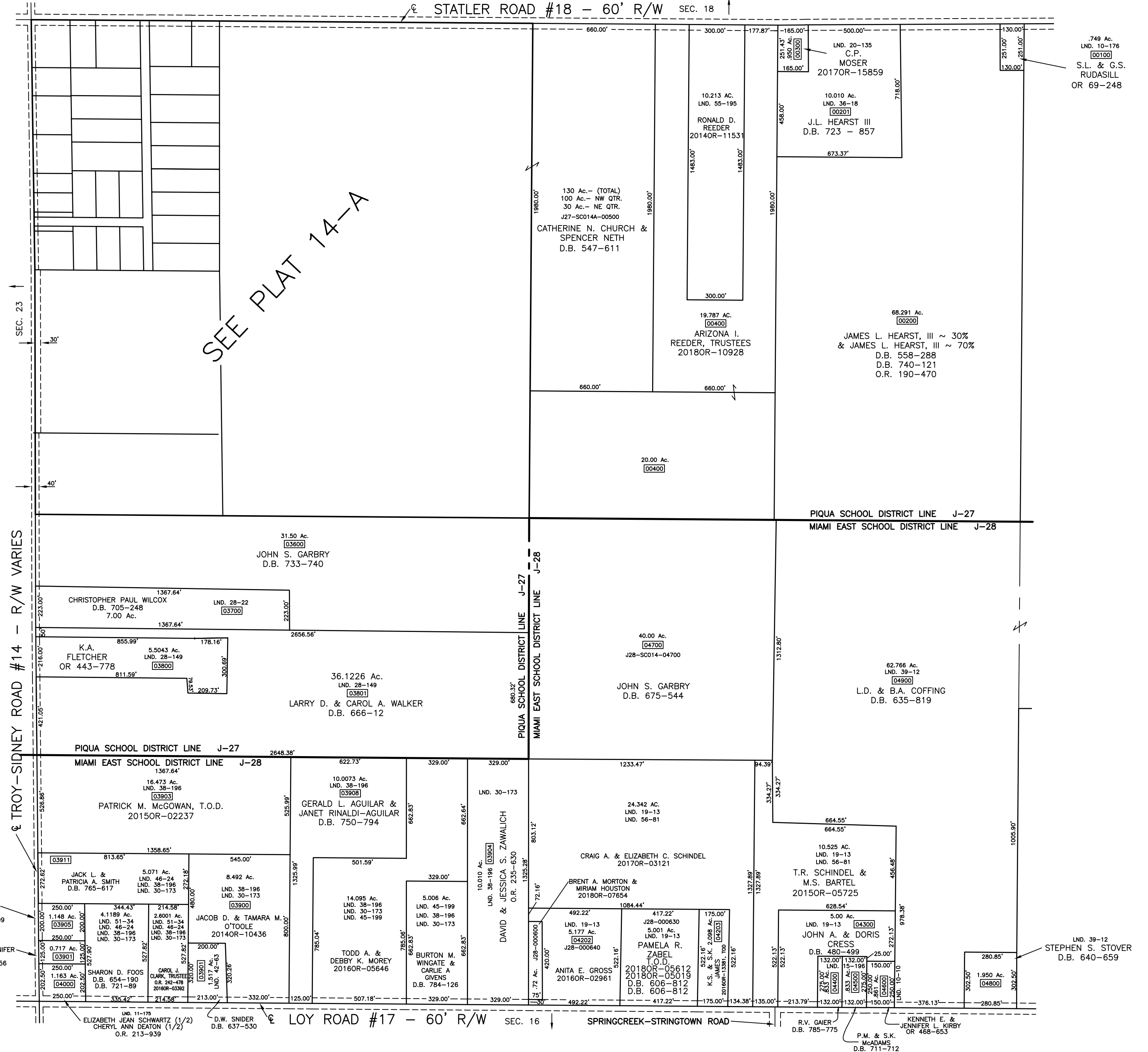


**ABBREVIATION LEGEND**

2014OR-07759 = RECORDER'S DOCUMENT NUMBER  
 OR 406-509 = OFFICAL RECORD 406, PAGE 509  
 D.B. 613-172 = DEED BOOK 613, PAGE 172  
 REC. 15-72 = RECORDER'S PLAT BOOK 15, PAGE 72  
 LND. 33-15 = LAND SURVEY VOLUME 33, PAGE 15  
 LOT 19-12 = LOT SURVEY VOLUME 19, PAGE 12  
 R.R. 8-29 = ROAD RECORD VOLUME 8, PAGE 29  
 R/W = RIGHT OF WAY  
 C = CENTERLINE  
 AC. = ACRES  
 TWP. = TOWNSHIP  
 TR. = TRACT  
 ② = LOT CREATED BY RECORDER'S PLAT

**SURVEY INDEX**

NORTHWEST QUARTER		
LND. 3-101	REC. 21-32	RD. REC. 9-5
LND. 10-146		
LND. 11-43		
LND. 19-70		
LND. 35-161		
REC. 7-30		
REC. 7-62		
REC. 7-104		
SEE PLAT 14-A		
NORTHEAST QUARTER		
LND. 10-176		
LND. 20-135		
LND. 36-18		
LND. 55-195		
SOUTHWEST QUARTER		
LND. 11-175		
LND. 28-22		
LND. 28-149		
LND. 38-196		
LND. 30-173		
LND. 38-175		
LND. 42-63		
LND. 45-199		
LND. 46-24		
LND. 51-34		
SOUTHEAST QUARTER		
LND. 10-10		
LND. 15-196		
LND. 19-13		
LND. 39-12		
LND. 56-81		



PREPARED BY: MIAMI COUNTY ENGINEER'S MAP DEPARTMENT  
 PAUL P. HUELSKAMP, COUNTY ENGINEER  
 DATE: AUGUST 1993  
 REVISED: September 10, 2018 IGRIFIN

.749 Ac.  
 LND. 10-176  
 [00100]  
 S.L. & G.S.  
 RUDASILL  
 OR 69-248

LND. 39-12  
 D.B. 640-659  
 STEPHEN S. STOVER

R.V. GAIER  
 D.B. 785-775  
 P.M. & S.K.  
 McADAMS  
 D.B. 711-712

LND. 19-13  
 D.B. 480-499  
 JOHN A. & DORIS  
 CRESS

10,525 Ac.  
 LND. 19-13  
 LND. 56-81  
 T.R. SCHINDEL &  
 M.S. BARTEL  
 2015OR-05725

62,766 Ac.  
 LND. 39-12  
 [04800]  
 L.D. & B.A. COFFING  
 D.B. 635-819

68,291 Ac.  
 [00200]  
 JAMES L. HEARST, III ~ 30%  
 & JAMES L. HEARST, III ~ 70%  
 D.B. 558-288  
 D.B. 740-121  
 O.R. 190-470

19,787 Ac.  
 [00400]  
 ARIZONA I.  
 REEDER, TRUSTEES  
 2018OR-10928

10,010 Ac.  
 LND. 36-18  
 [00201]  
 J.L. HEARST III  
 D.B. 723 - 857

LND. 20-135  
 C.P.  
 MOSER  
 2017OR-15859

130 Ac. - (TOTAL)  
 100 Ac. - NW QTR.  
 30 Ac. - NE QTR.  
 J27-SC014A-00500  
 CATHERINE N. CHURCH &  
 SPENCER NETH  
 D.B. 547-611

40.00 Ac.  
 [04700]  
 J28-SC014-04700

24,342 Ac.  
 LND. 19-13  
 LND. 56-81  
 CRAIG A. & ELIZABETH C. SCHINDEL  
 2017OR-03121

492.22' 417.22' 175.00'  
 LND. 19-13  
 5,177 Ac.  
 [04202]  
 J28-000640  
 ANITA E. GROSS  
 2016OR-02961

5,006 Ac.  
 LND. 45-199  
 LND. 38-196  
 LND. 30-173  
 BURTON M.  
 WINGATE &  
 CARLIE A  
 OIVENS  
 D.B. 784-126

14,095 Ac.  
 LND. 38-196  
 LND. 30-173  
 LND. 45-199  
 TODD A. &  
 DEBBY K. MOREY  
 2016OR-05646

10,0073 Ac.  
 LND. 38-196  
 [03908]  
 GERALD L. AGUILAR &  
 JANET RINALDI-AGUILAR  
 D.B. 750-794

31.50 Ac.  
 [03600]  
 JOHN S. GARBRY  
 D.B. 733-740

20.00 Ac.  
 [00400]

19,787 Ac.  
 [00400]  
 ARIZONA I.  
 REEDER, TRUSTEES  
 2018OR-10928

130 Ac. - (TOTAL)  
 100 Ac. - NW QTR.  
 30 Ac. - NE QTR.  
 J27-SC014A-00500  
 CATHERINE N. CHURCH &  
 SPENCER NETH  
 D.B. 547-611

10,213 Ac.  
 LND. 55-195  
 RONALD D.  
 REEDER  
 2014OR-11533

251.43  
 850 Ac.  
 [00500]  
 185.00'

185.00'

185.00'

185.00'

185.00'

185.00'