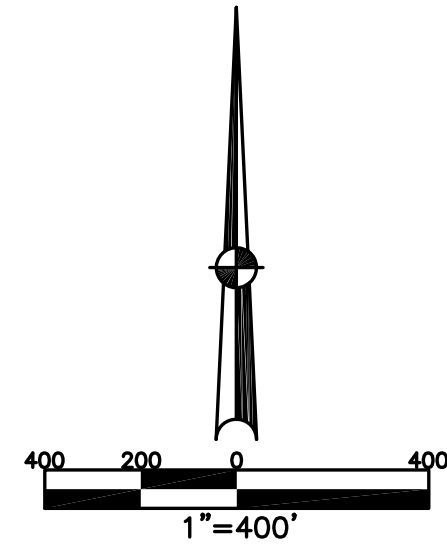


SPRING CREEK TWP.  
MIAMI COUNTY, OHIO

SECTION 3 TOWN 1 RANGE 12  
SHELBY COUNTY EAST MIAMI-SHELBY ROAD EAST - 60' R/W

PARCEL NUMBER  
J27-\_\_\_\_\_

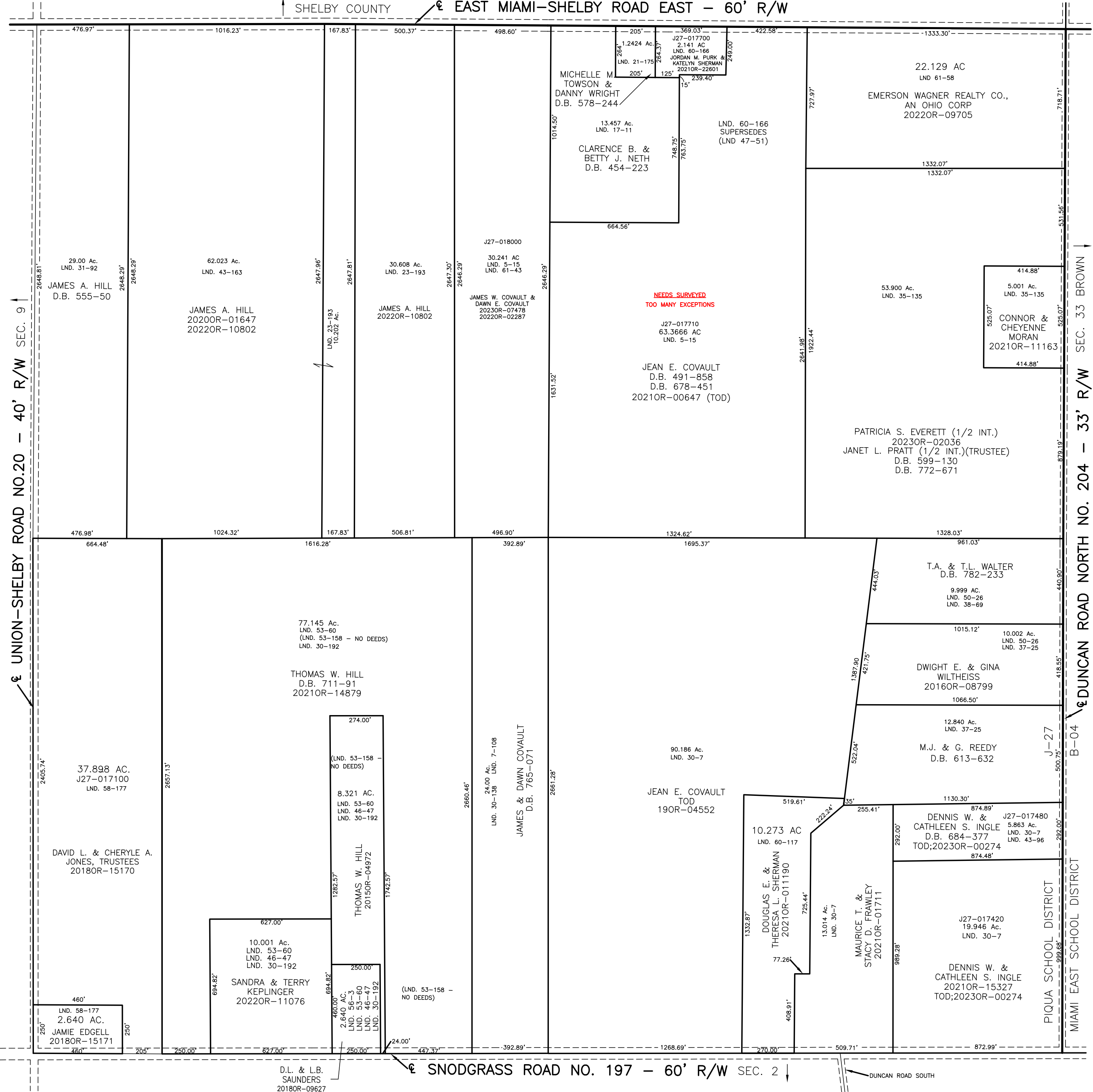
PLAT 3



ABBREVIATION LEGEND	
2014OR-07759	= RECORDER'S DOCUMENT NUMBER
OR 406-509	= OFFICIAL RECORD 406 PAGE 509
D.B. 613-172	= DEED BOOK 613, PAGE 172
REC. 15-72	= RECORDER'S PLAT BOOK 15, PAGE 72
LND. 33-15	= LAND SURVEY VOLUME 33, PAGE 15
LOT 19-12	= LOT SURVEY VOLUME 19, PAGE 12
R.R. 8-29	= ROAD RECORD VOLUME 8, PAGE 29
R/W	= RIGHT OF WAY
⊕	= CENTERLINE
AC.	= ACRES
TWP.	= TOWNSHIP
TR.	= TRACT
Ⓢ	= LOT CREATED BY RECORDER'S PLAT

SURVEY INDEX		
NORTHWEST QUARTER		
LND. 31-92		
LND. 23-193		
LND. 5-15		
LND. 43-163		
LND. 61-43		
NORTHEAST QUARTER		
LND. 5-15		
LND. 17-11		
LND. 21-175		
LND. 35-135		
(LND. 47-51)		
LND. 60-166		
LND. 61-58		
SOUTHWEST QUARTER		
LND. 30-192		
LND. 30-138		
LND. 46-47		
LND. 53-60		
(LND. 53-158 - NO DEEDS)		
LND. 56-3		
SOUTHEAST QUARTER		
LND. 30-7		
LND. 37-25		
LND. 38-69		
LND. 43-96		
LND. 50-26		
LND. 58-177		
(LND. 60-117)		

PREPARED BY: MIAMI COUNTY ENGINEER'S MAP DEPARTMENT  
PAUL P. HUELSKAMP, P.E., P.S., COUNTY ENGINEER  
DATE: MAY 25, 1993  
REVISED: July 14, 2023 DJACQUEMIN



D.L. & L.B.  
SAUNDERS  
2018OR-09627

SNODGRASS ROAD NO. 197 - 60' R/W SEC. 2

DUNCAN ROAD SOUTH

DUNCAN ROAD NORTH NO. 204 - 33' R/W SEC. 33 BROWN

PIQUA SCHOOL DISTRICT  
MIAMI EAST SCHOOL DISTRICT