

PIQUA S.W.  
Corporation

SMDA NUMBER  
N44-SW106\_ - - - - -

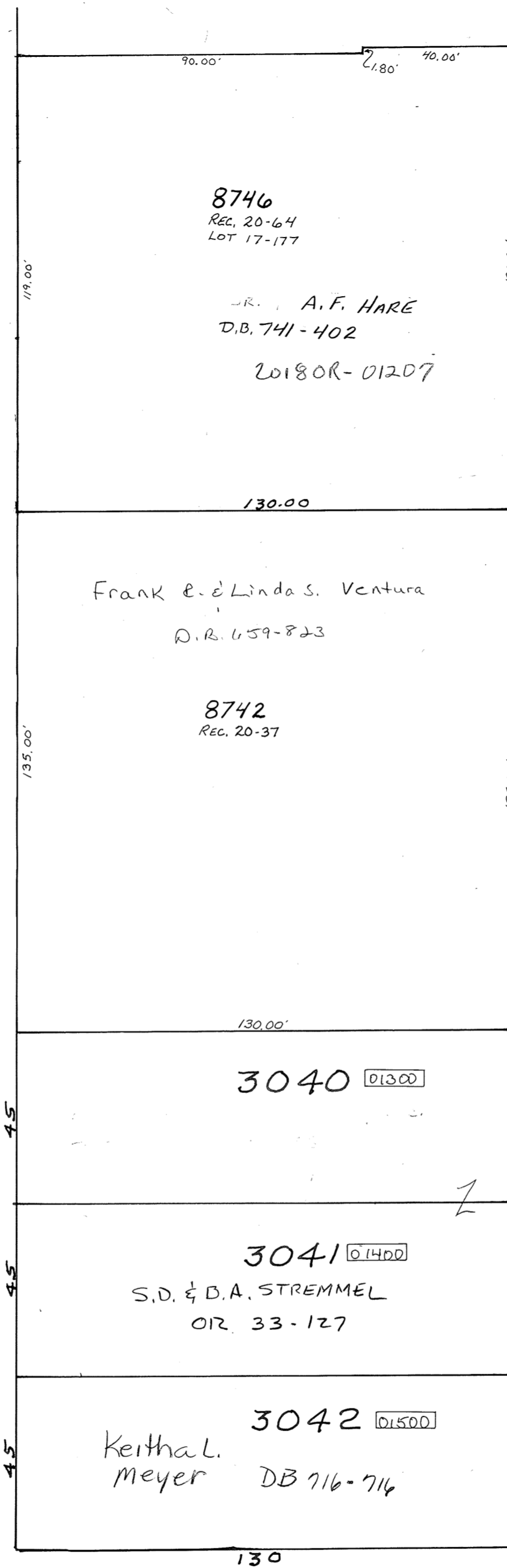
PLAT NO. 106  
Scale 1" = 30 Feet



WILSON AVENUE

60' R/W

WILSON



8746  
REC. 20-64  
LOT 17-177

A.F. HARE  
D.B. 741-402  
20180R-01207

Frank E. & Linda S. Ventura  
D.B. 659-823

8742  
REC. 20-37

3040 01300

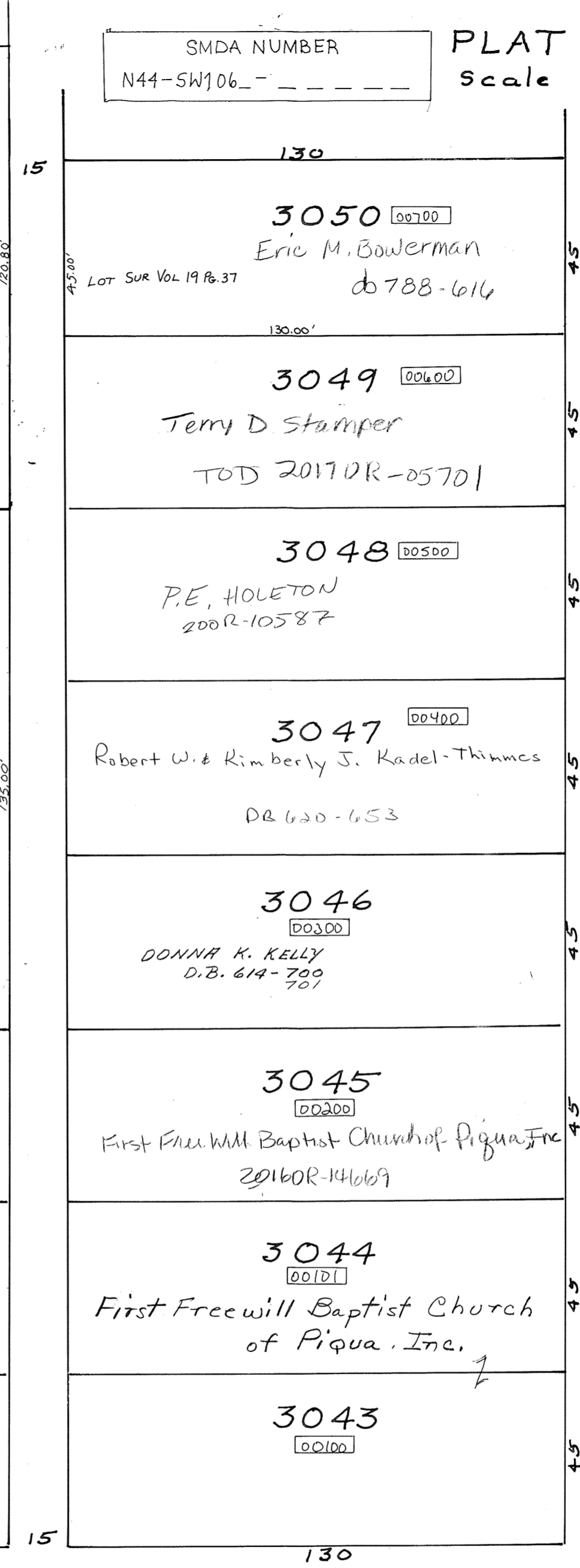
3041 01400

S.D. & D.A. STREMMEL  
O.R. 33-127

3042 01500

Keitha L. Meyer  
DB 716-714

130



3050 00700

Eric M. Bowerman  
db 788-614

3049 00600

Terry D Stamper  
TOD 2017DR-05701

3048 00500

P.E. HOLETON  
200R-10587

3047 00400

Robert W. & Kimberly J. Kadel-Thimmes  
DB 620-653

3046 00300

DONNA K. KELLY  
D.B. 614-700  
701

3045 00200

First Free Will Baptist Church of Piqua, Inc.  
2016OR-141669

3044 00101

First Free Will Baptist Church  
of Piqua, Inc.

3043 00100

130

15

45.00'

130.00'

45.00'

45.00'

45.00'

45.00'

45.00'

45.00'

45.00'

45.00'

45.00'

45.00'

45.00'

45.00'

45.00'

45.00'

15

BLAINE AVENUE

60' R/W

BLAINE

Rec. Bk. 2-Pg. 103

CLARK

80' R/W

AVENUE