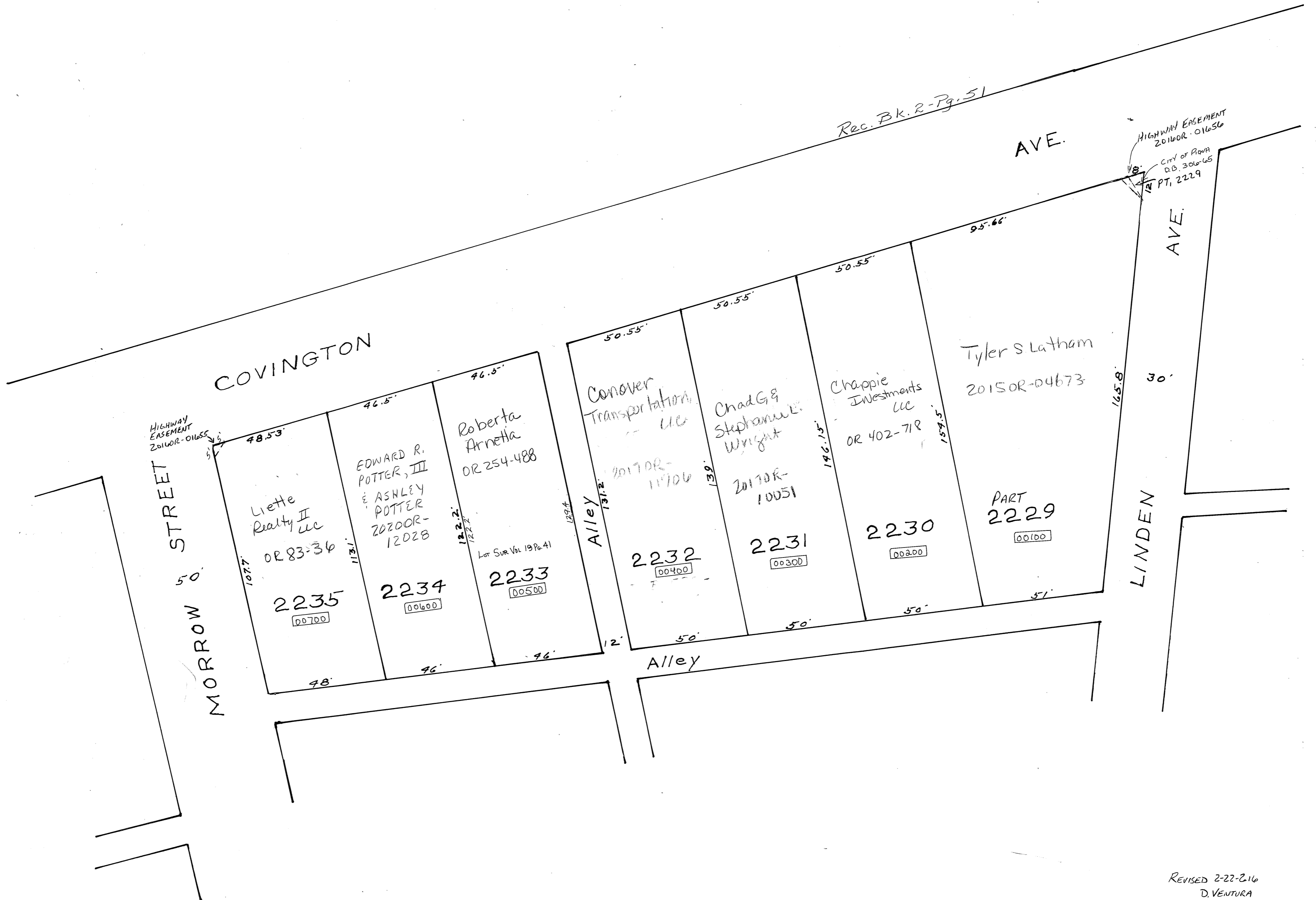


PIQUA Corporation

S.W. SECTION

PLAT NO. 35
SCALE 1-INCH 30 FEET

SMDA NUMBER
N44-SW035-_-_-_-_-_-_-_-_-_-_-



HIGHWAY EASEMENT
2016OR-01655

Rec. Bk. 2-Pg. 51

HIGHWAY EASEMENT
2016OR-01656
CITY OF PIQUA
O.B. 306-65
PT. 2229

MORROW STREET
50'

COVINGTON AVE.

LINDEN AVE.
30'

2235
Liette Realty II LLC
OR 83-36
00700

2234
EDWARD R. POTTER, III
& ASHLEY POTTER
2020OR-12028
00600

2233
Roberta Arnetta
OR 254-488
Lot Sur Vol 19 Pg. 41
00500

2232
Conover Transportation LLC
2017OR-11706
00400

2231
Chad G. & Stephanie L. Wright
2017OR-10051
00300

2230
Chappie Investments LLC
OR 402-718
00200

PART 2229
Tyler S Latham
2015OR-04673
00100

Alley

Alley