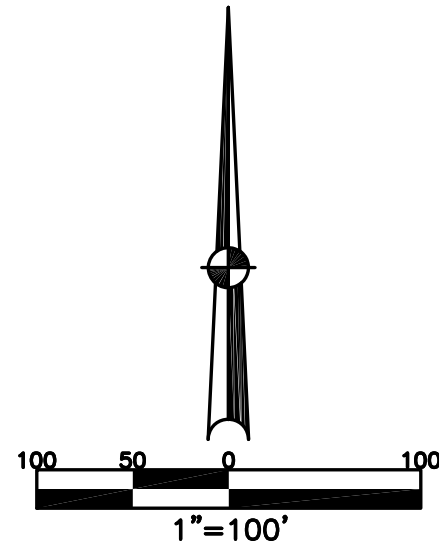


SECTION 14
TOWN 8
RANGE 5



CITY OF PIQUA
MIAMI COUNTY, OHIO

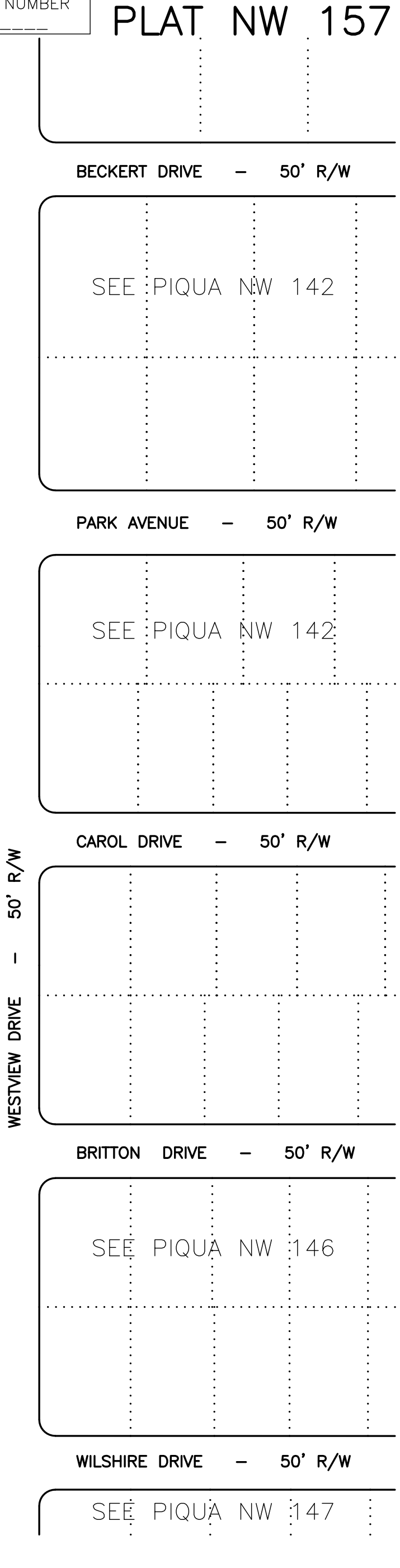
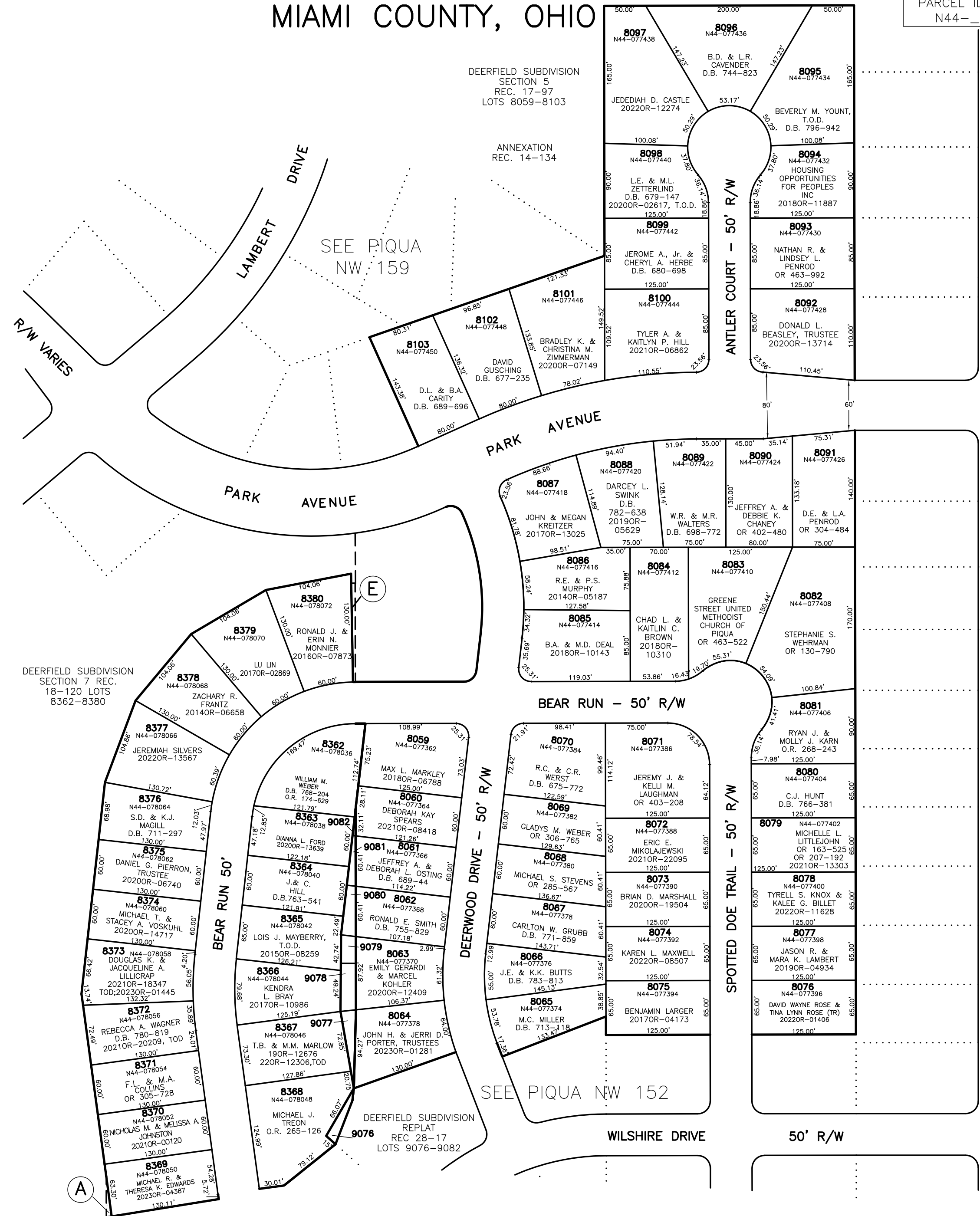
PARCEL ID NUMBER
N44-_____
PLAT NW 157

ABBREVIATION LEGEND	
2014OR-07759	= RECORDER'S DOCUMENT NUMBER
OR 57-436	= OFFICIAL RECORD 57 PAGE 436
D.B. 613-172	= DEED BOOK 613, PAGE 172
REC. 15-72	= RECORDER'S PLAT BOOK 15, PAGE 72
LND. 33-15	= LAND SURVEY VOLUME 33, PAGE 15
LOT 19-12	= LOT SURVEY VOLUME 19, PAGE 12
R.R. 8-29	= ROAD RECORD VOLUME 8, PAGE 29
R/W	= RIGHT OF WAY
C	= CENTERLINE
AC.	= ACRES
TWP.	= TOWNSHIP
TR.	= TRACT
IL	= INLOT

LINE LEGEND	
	Blow-up Boundary
	Property Line
	Lot Split Line
	Section Line
	Centerline
	Right-of-Way Line
	Corporation Line

SURVEY INDEX		
	LOT 21-111	REC. 14-134 REC. 17-97 REC. 18-120

A&E & 9077-9082 OWNERS CAN BE FOUND ON PIQUA N.W. 150



PREPARED BY: MIAMI COUNTY ENGINEER'S MAP DEPARTMENT
PAUL P. HUELSKAMP, COUNTY ENGINEER
DATE: OCTOBER 15, 1996
REVISED: April 28, 2023 DJACQUEMIN