

ABBREVIATION LEGEND	
2014OR-07759	= RECORDER'S DOCUMENT NUMBER OR 406-509 = OFFICIAL RECORD 406 PAGE 509
D.B. 613-172	= DEED BOOK 613, PAGE 172
REC. 15-72	= RECORDER'S PLAT BOOK 15, PAGE 72
LND. 33-15	= LAND SURVEY VOLUME 33, PAGE 15
LOT 19-12	= LOT SURVEY VOLUME 19, PAGE 12
R.R. 8-29	= ROAD RECORD VOLUME 8, PAGE 29
R/W	= RIGHT OF WAY
CL	= CENTERLINE
AC.	= ACRES
TWP.	= TOWNSHIP
TR.	= TRACT
IL	= INLOT

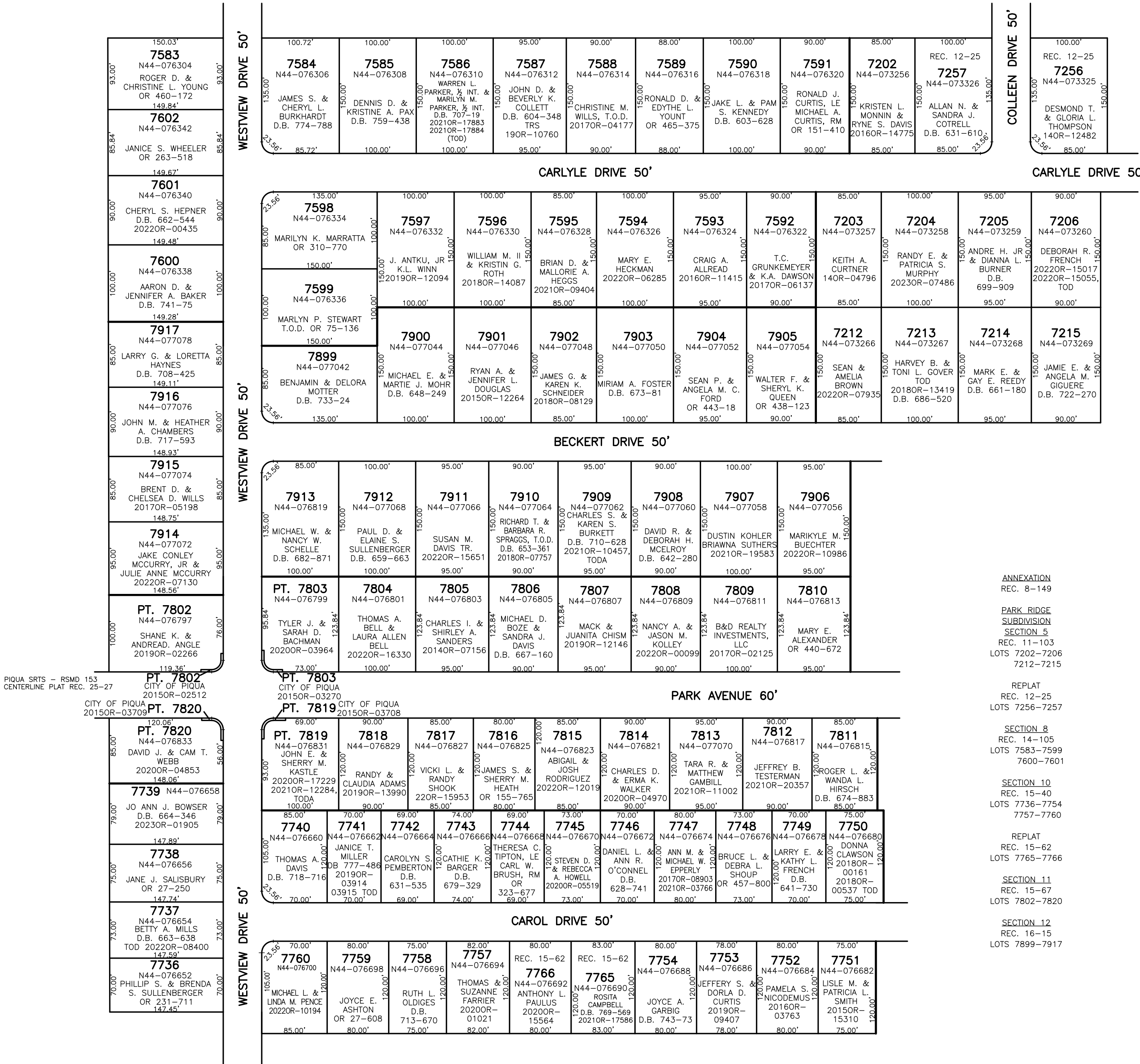
  

LINE LEGEND	
	Blow-up Boundary
	Property Line
	Lot Split Line
	Section Line
	Centerline
	Right-of-Way Line
	Corporation Line

SURVEY INDEX	
REC. 8-149	RSMD 153
REC. 11-103	
REC. 12-25	
REC. 14-105	
REC. 15-40	
REC. 15-62	
REC. 15-67	
REC. 16-15	
REC. 25-27	

PREPARED BY: MIAMI COUNTY ENGINEER'S MAP DEPARTMENT  
PAUL P. HUELSKAMP, P.E., P.S., COUNTY ENGINEER  
DATE: MARCH 3, 2014 MB  
REVISED: July 14, 2023 DJACQUEMIN



ANNEXATION  
REC. 8-149

PARK RIDGE  
SUBDIVISION  
SECTION 5  
REC. 11-103  
LOTS 7202-7206  
7212-7215

REPLAT  
REC. 12-25  
LOTS 7256-7257

SECTION 8  
REC. 14-105  
LOTS 7583-7599  
7600-7601

SECTION 10  
REC. 15-40  
LOTS 7736-7754  
7757-7760

REPLAT  
REC. 15-62  
LOTS 7765-7766

SECTION 11  
REC. 15-67  
LOTS 7802-7820

SECTION 12  
REC. 16-15  
LOTS 7899-7917