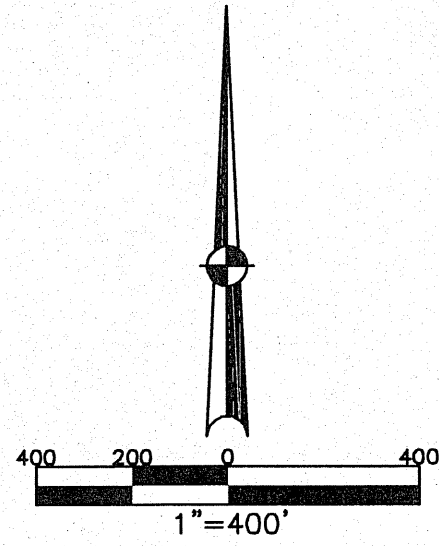


WASHINGTON TWP.
MIAMI COUNTY, OHIO

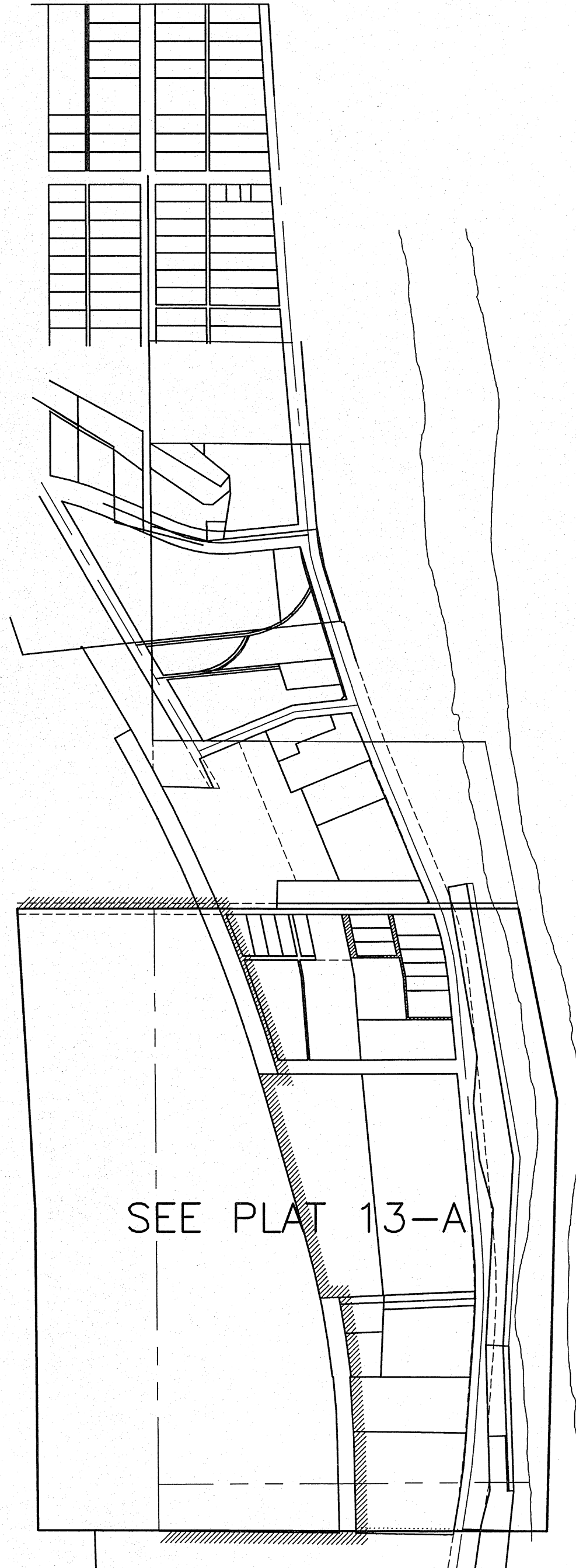
SECTION 20 TOWN 6 RANGE 6

PLAT 13



ABBREVIATION LEGEND	
OR 261-419	= OFFICIAL RECORD 261 PAGE 419
D.B. 613-172	= DEED BOOK 613, PAGE 172
REC. 15-72	= RECORDER'S PLAT BOOK 15, PAGE 72
LND. 33-15	= LAND SURVEY VOLUME 33, PAGE 15
LOT 19-12	= LOT SURVEY VOLUME 19, PAGE 12
R.R. 8-29	= ROAD RECORD VOLUME 8, PAGE 29
R/W	= RIGHT OF WAY
CL	= CENTERLINE
AC.	= ACRES
TWP.	= TOWNSHIP
TR.	= TRACT
Ⓞ	= LOT CREATED BY RECORDER'S PLAT

SURVEY INDEX		
LND. 4-367	LOT 9-35	REC. 9 - 71
LND. 4-321		REC. 8-100
LND. 7-71		REC. 11-133
LND. 8-183		REC. 17-56
LND. 9-19		REC. 23-39
LND. 10-117		
LND. 14-18		
LND. 16-167		
LND. 17-133		
LND. 19-162		
LND. 22-176		
LND. 25-27		
LND. 44-40		
LND. 52-164		
LND. 53-174		
		R.C. 53
		R.C. 88



PREPARED BY: MIAMI COUNTY ENGINEER'S MAP DEPARTMENT
PAUL P. HUELSKAMP, P.E., P.S., COUNTY ENGINEER
DATE: AUGUST 23, 2012 DV
REV.: AUGUST 23, 2012 DV