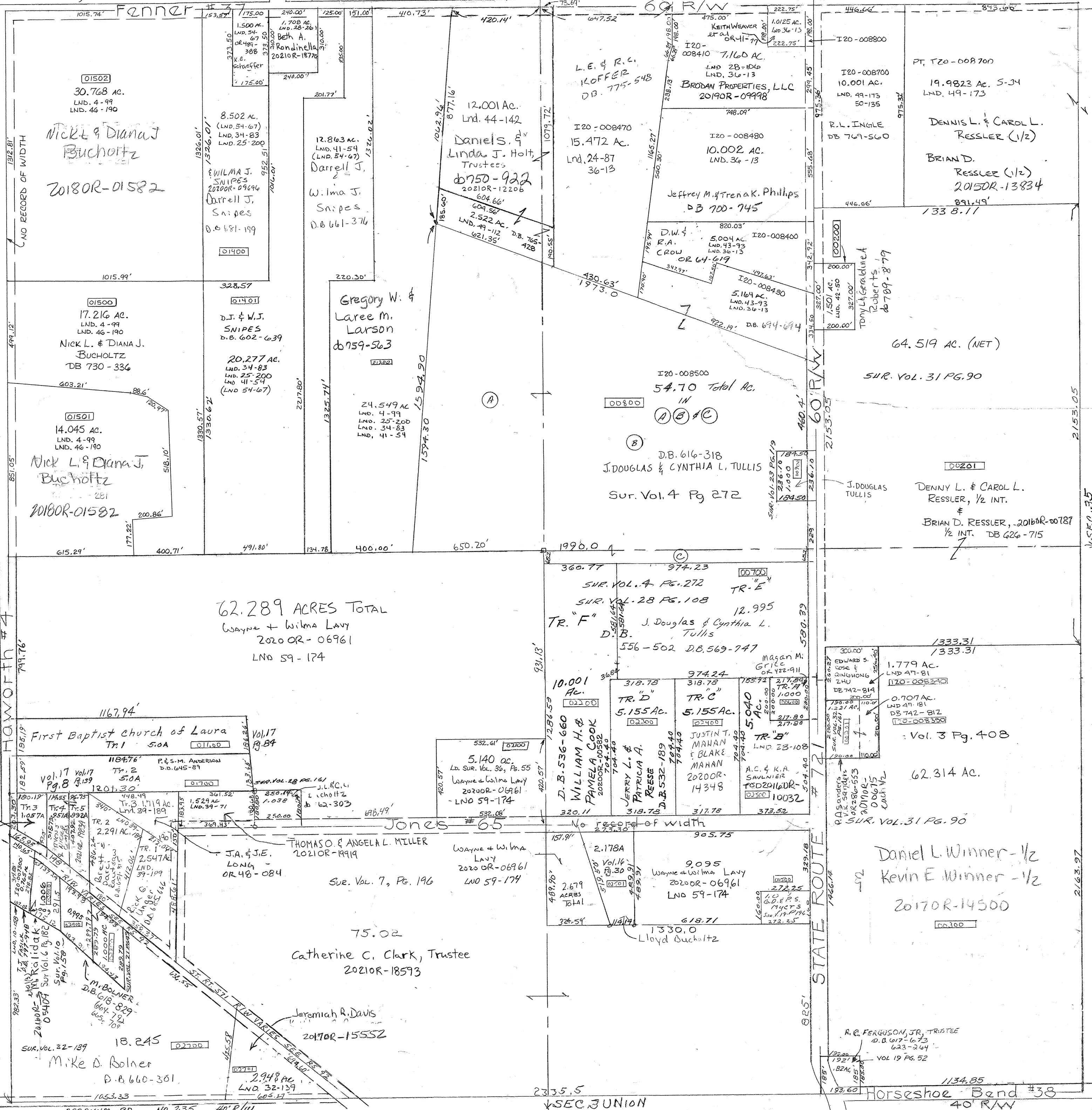


LND. 49-112
 LND. 38-121
 LND. 50-135
 LND. 47-181
 LND. 38-121
 LND. 39-189
 LND. 42-50
 LND. 44-142
 LND. 46-190
 Vol. 17 Pg. 139 S.W. Pt. S.W.
 Vol. 17 Pg. 139 S.W. Pt. S.W.
 Vol. 6 Pg. 102 W. Cen Pt. S.W.
 Vol. 7 Pg. 196 - SE Pt. S.W.
 Vol. 10 Pg. 158 - W. Cen Pt. S.W.
 Vol. 16 Pg. 30 - W. Cen. Pt. S.E.
 Vol. 17 Pg. 8 - SW Pt. S.W.
 Vol. 17 Pg. 84 - W. Pt. S.W.
 NE. Pt. SE. Qtr. Lnd. 42-142
 NE. Pt. NW. Qtr. & NW. Pt. NE. Qtr. Lnd. 44-142
 LND. 46-190
 DARKE COUNTY
 HOWARTH #4
 Survey #1
 Vol. 1 Pg. 171
 Vol. 2 Pg. 408
 Vol. 3 Pg. 412
 Vol. 4 Pg. 99
 Vol. 4 Pg. 272
 Whole NE Pt. SE
 W. Cen Pt. S.W.
 W. Pt. N.W.
 Cen Pt. N.W.
 E. Cen Pt. S.W.



PARCEL NUMBER
 I 30-1

