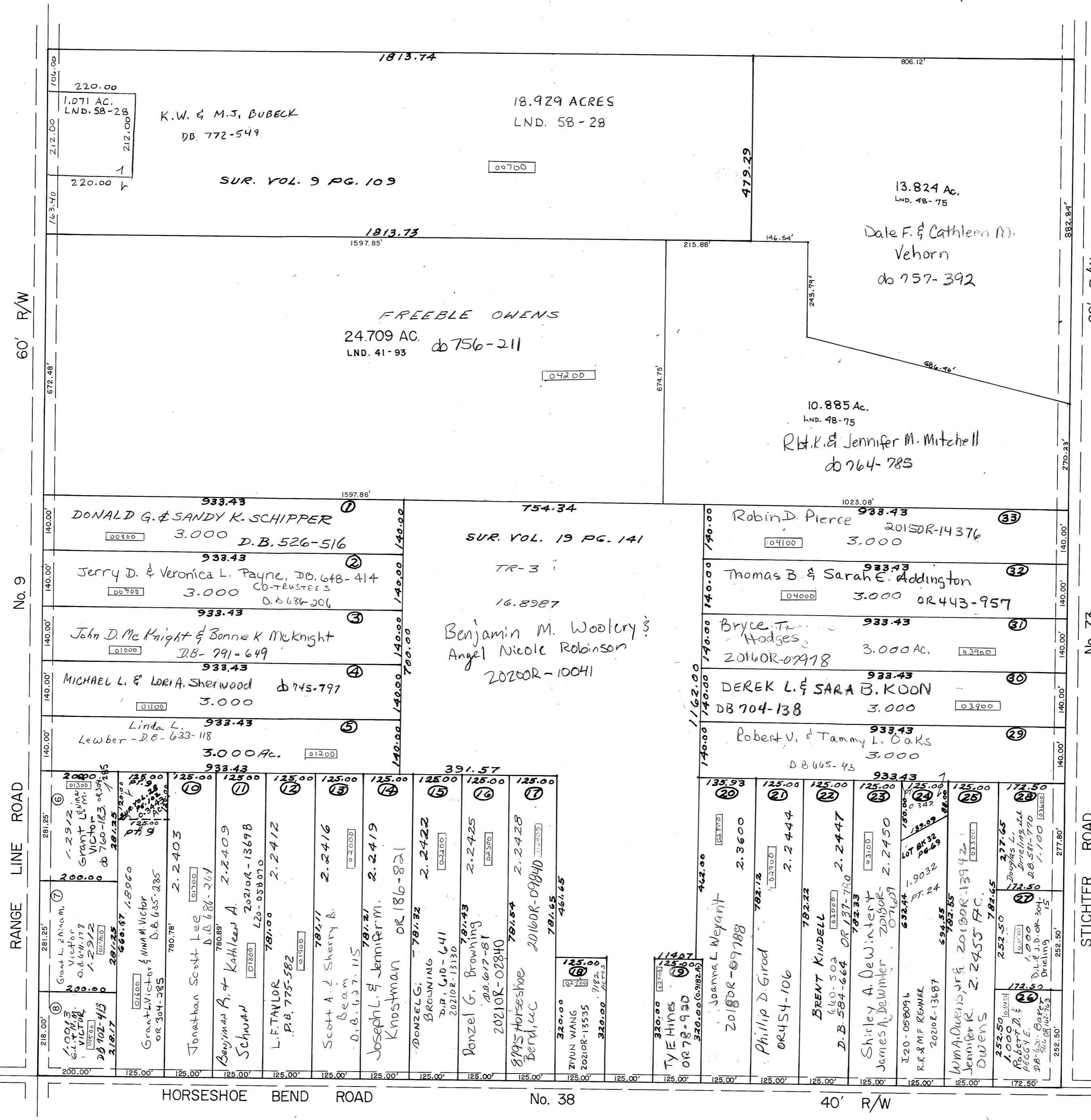


CHAR-MAR SUB., SECTION 1  
LOTS 1 THRU 18  
REC. BOOK 10, PAGE 122



60' R/W (12-7-1887)  
(SEE COMMISSIONERS' JOURNAL 8, PAGE 437, FOR RIGHT-OF-WAY)  
WIDTH REVISED ACCORDING TO RESEARCH BY MIAMI COUNTY MAP  
DEPARTMENT ON 2-27-2003.

PARCEL NUMBER

No. 73  
STICHTER ROAD  
CHAR-MAR SUB., SECTION 2  
LOTS 19 THRU 33  
REC. BOOK 10, PG. 123