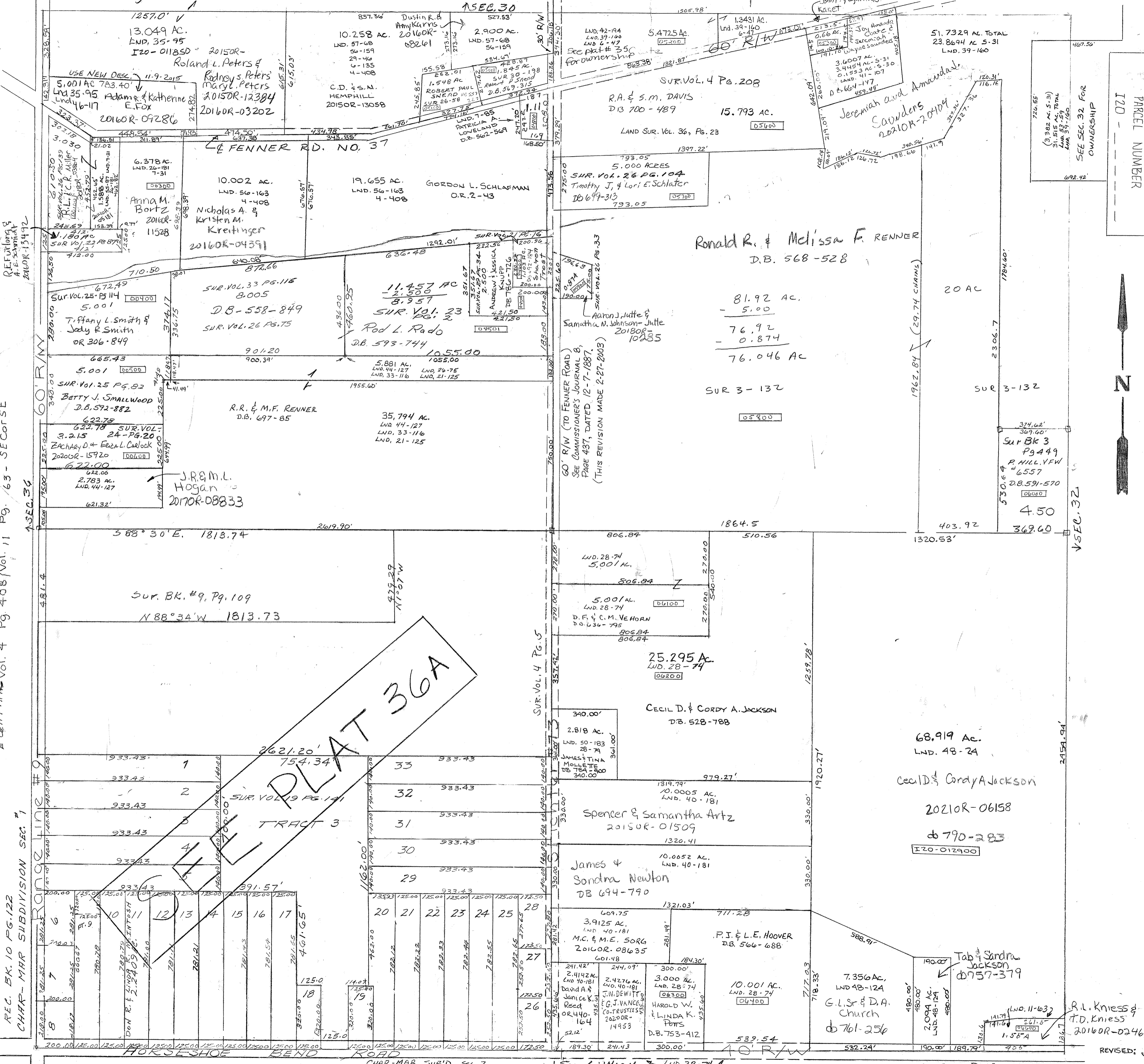


LAND 48-124 S.P. SE QTR. LAND 55-87 NW P. NW QTR. LAND 42-194-NW P. NE QTR. LAND 10-117 NW QTR. LAND 48-24 E.P. E QTR.

SURVEYS Vol. 6 Pg. 135 Vol. 7 Pg. 31 Vol. 7 Pg. 85 Vol. 9 Pg. 109 Vol. 10 Pg. 26 Vol. 11 Pg. 63 Vol. 6 Pg. 47 Vol. 6 Pg. 135 Vol. 7 Pg. 31 Vol. 7 Pg. 85 Vol. 9 Pg. 109 Vol. 10 Pg. 26 Vol. 11 Pg. 63



REC. BK. 10 PG. 122 CHAR-MAR SUBDIVISION SEC. 1

CHAR-MAR SUB'D SEC. 2 REC. 10-123 Sec. 16 UNION

SUR BK. 11 Pg 63

REVISED: 12-11-30-21