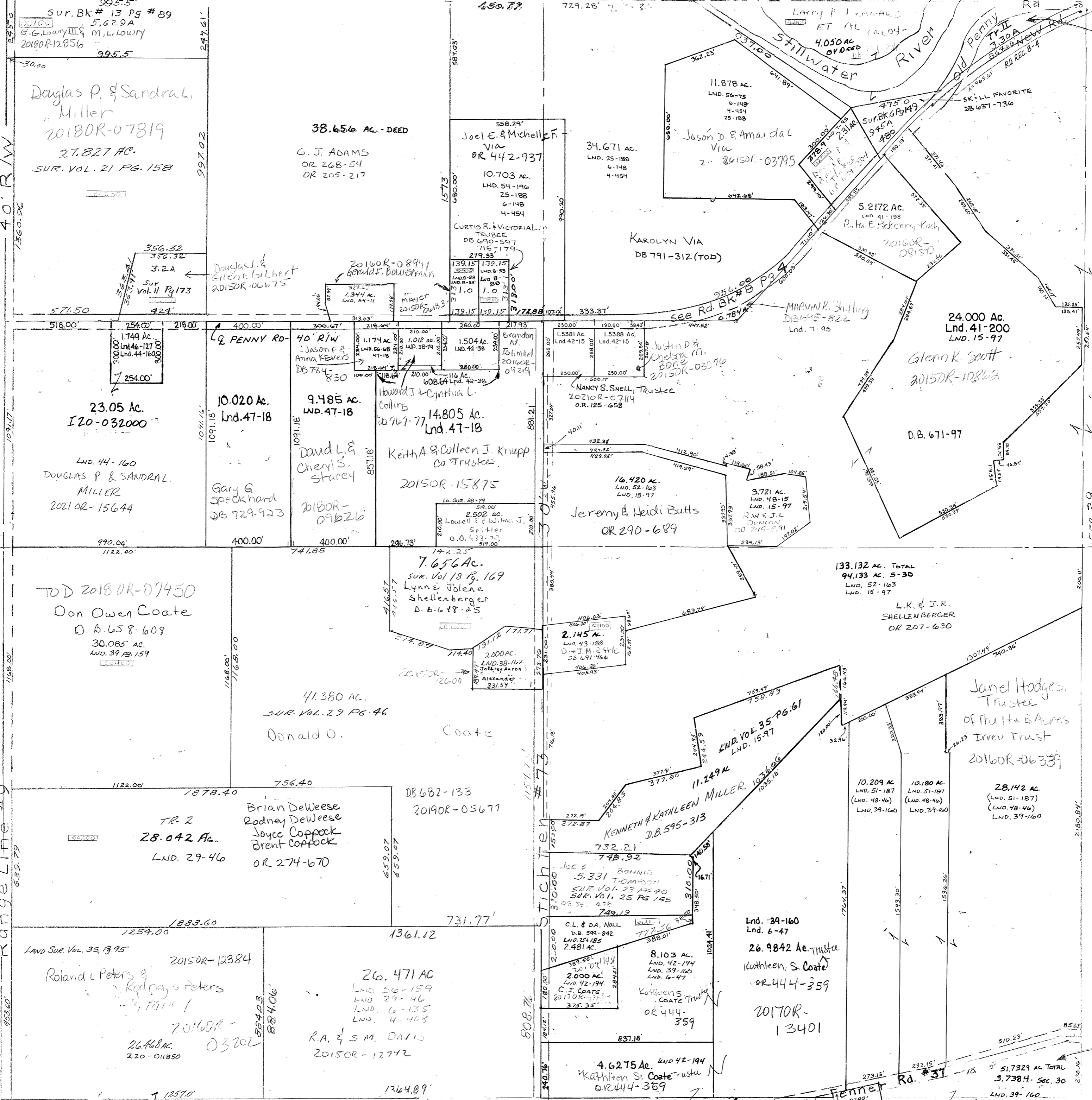


- Lnd. 38-162
- Lnd. 46-127
- Lnd. 47-18
- Lnd. 48-15
- Lnd. 48-46
- Lnd. 54-196
- Lnd. 56-68
- Lnd. 56-75
- Vol. 8 Pg. 53-E Cent. Pt. NW
- Vol. 8 Pg. 58-E Cent. Pt. NW
- Vol. 8 Pg. 64 - Penny Rd.
- Vol. 10 " 26 - Cent. Pt. SE
- Vol. 11 " 173 - W. Cent. Pt. NW
- Vol. 13 " 89 - N.W. Cor. NW
- Vol. 15 " 97 - S. Pt. NE & NW
- Vol. 18 " 169 - NE Cor. SW
- Vol. 47 - SW. Pt. SE
- Vol. 47 - SE. Pt. SW
- Vol. 47 - Cent. Pt. NW
- Vol. 47 - Cent. Pt. NE
- Vol. 47 - Cent. Pt. E
- Vol. 6 Pg. 134
- Vol. 6 Pg. 41
- Vol. 6 Pg. 40
- Vol. 6 Pg. 40
- Vol. 6 Pg. 43
- Vol. 7 Pg. 45
- Vol. 7 Pg. 45
- Vol. 7 Pg. 45
- Vol. 7 Pg. 397
- S. Pt. 1/2 Sec. Line - Vol. 3 Pg. 134
- N.W. Pt. SW - Vol. 3 Pg. 40
- W. Pt. SE - Vol. 1 Pg. 40
- SE Pt. SW - Vol. 1 Pg. 40
- Cent. Pt. NW - Vol. 1 Pg. 40
- Vol. 4 Pg. 45
- Vol. 4 Pg. 45
- Lnd. 41-198
- Lnd. 41-200
- Lnd. 42-15
- Lnd. 42-38
- Lnd. 42-194
- Lnd. 44-160

PARCEL NUMBER  
120



Michael D. McGriff  
2020 OR-13513

11-9-2015  
Dr  
OR 503-336  
Jack Eugene Coate  
2021 OR-18931