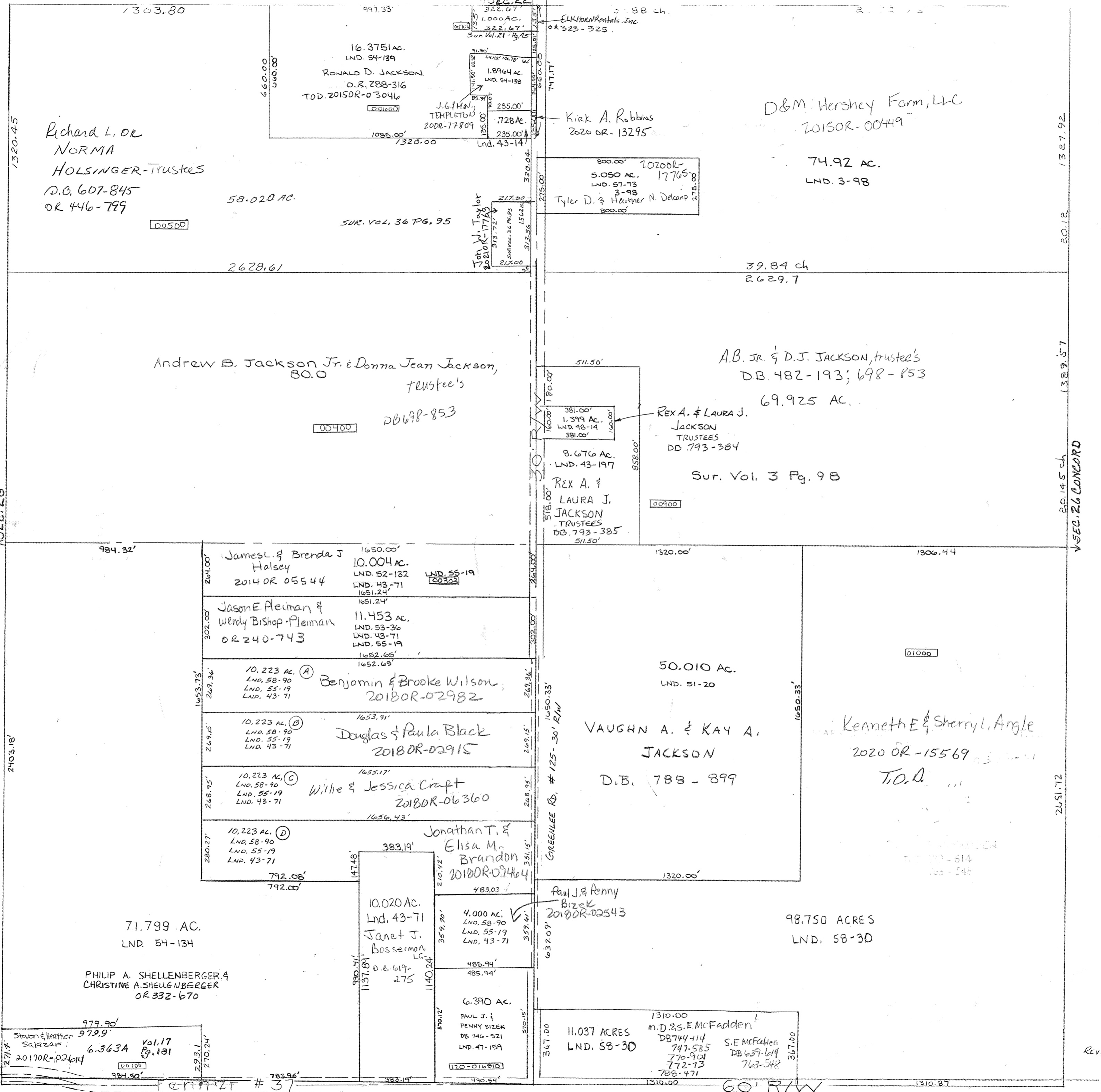


SMDA NUMBER
120-NT032



Surveys -
Vol. 3 Pg 98 - N.E.Q.T.
Vol. 17 Pg. 181 - S.W. Cor. NW Qtr.
Lnd. 43-14 NE Cor. NW Qtr.
Lnd. 43-71 E Pt. SW Qtr.
Lnd. 47-159 SE COR. SW QTR.



Richard L. OR
NORMA
HOLSINGER-TRUSTEES
D.O. 607-845
OR 446-789

16.375 AC.
LND. 54-139
RONALD D. JACKSON
O.R. 288-316
TOD. 2015OR-03046

00500

SUR. VOL. 36 PG. 95

Andrew B. Jackson Jr. & Donna Jean Jackson,
80.0
trustee's

00400

DB 698-853

James L. & Brenda J
Halsey
2014OR 05544

LND. 55-19
00303

Jason E. Pleiman &
Wendy Bishop-Pleiman
OR 240-743

10.223 AC. (A)
LND. 58-90
LND. 55-19
LND. 43-71
Benjamin & Brooke Wilson
2018OR-02982

10.223 AC. (B)
LND. 58-90
LND. 55-19
LND. 43-71
Douglas & Paula Black
2018OR-02915

10.223 AC. (C)
LND. 58-90
LND. 55-19
LND. 43-71
Willie & Jessica Craft
2018OR-06360

10.223 AC. (D)
LND. 58-90
LND. 55-19
LND. 43-71
Jonathan T. &
Elisa M. Brandon
2018OR-07464

71.799 AC.
LND. 54-134

PHILIP A. SHELLENBERGER &
CHRISTINE A. SHELLENBERGER
OR 332-670

Stevan & Heather
Salazar
2017OR-02614
6.363A
Vol. 17
Pg. 181

00108

10.020 AC.
Lnd. 43-71
Janet J.
Bosserman
D.E. 619-275

4.000 AC.
LND. 58-90
LND. 55-19
LND. 43-71

6.390 AC.
PAUL J. &
PENNY BIZEK
DB 746-521
LND. 47-159

11.037 ACRES
LND. 58-30

120-016810

Paul J. & Penny
Bizek
2018OR-22543

485.94'
485.94'

1310.00
M.D.S.E. McFadden
DB 744-414
747-585
770-901
772-73
788-471

S.E. McFadden
DB 639-614
763-548

1310.00

VAUGHN A. & KAY A.
JACKSON
D.B. 788 - 899

Kenneth E & Sherryl L. Angle
2020 OR-15569
T.O.D.

50.010 AC.
LND. 51-20

01000

REX A. & LAURA J.
JACKSON
TRUSTEES
DB. 793-384

00900

REX A. &
LAURA J.
JACKSON
TRUSTEES
DB. 793-385

A.B. JR. & D.J. JACKSON, trustee's
D.B. 482-193; 698-853
69.925 AC.

8.676 AC.
LND. 43-197

1.399 AC.
LND. 48-14
381.00'

50.010 AC.
LND. 51-20

VAUGHN A. & KAY A.
JACKSON
D.B. 788 - 899

Kenneth E & Sherryl L. Angle
2020 OR-15569
T.O.D.

4.000 AC.
LND. 58-90
LND. 55-19
LND. 43-71

6.390 AC.
PAUL J. &
PENNY BIZEK
DB 746-521
LND. 47-159

11.037 ACRES
LND. 58-30

S.E. McFadden
DB 639-614
763-548

1310.00

D & M Hershey Farm, LLC
2015OR-00449

74.92 AC.
LND. 3-98

SEC. 34

60' R/W