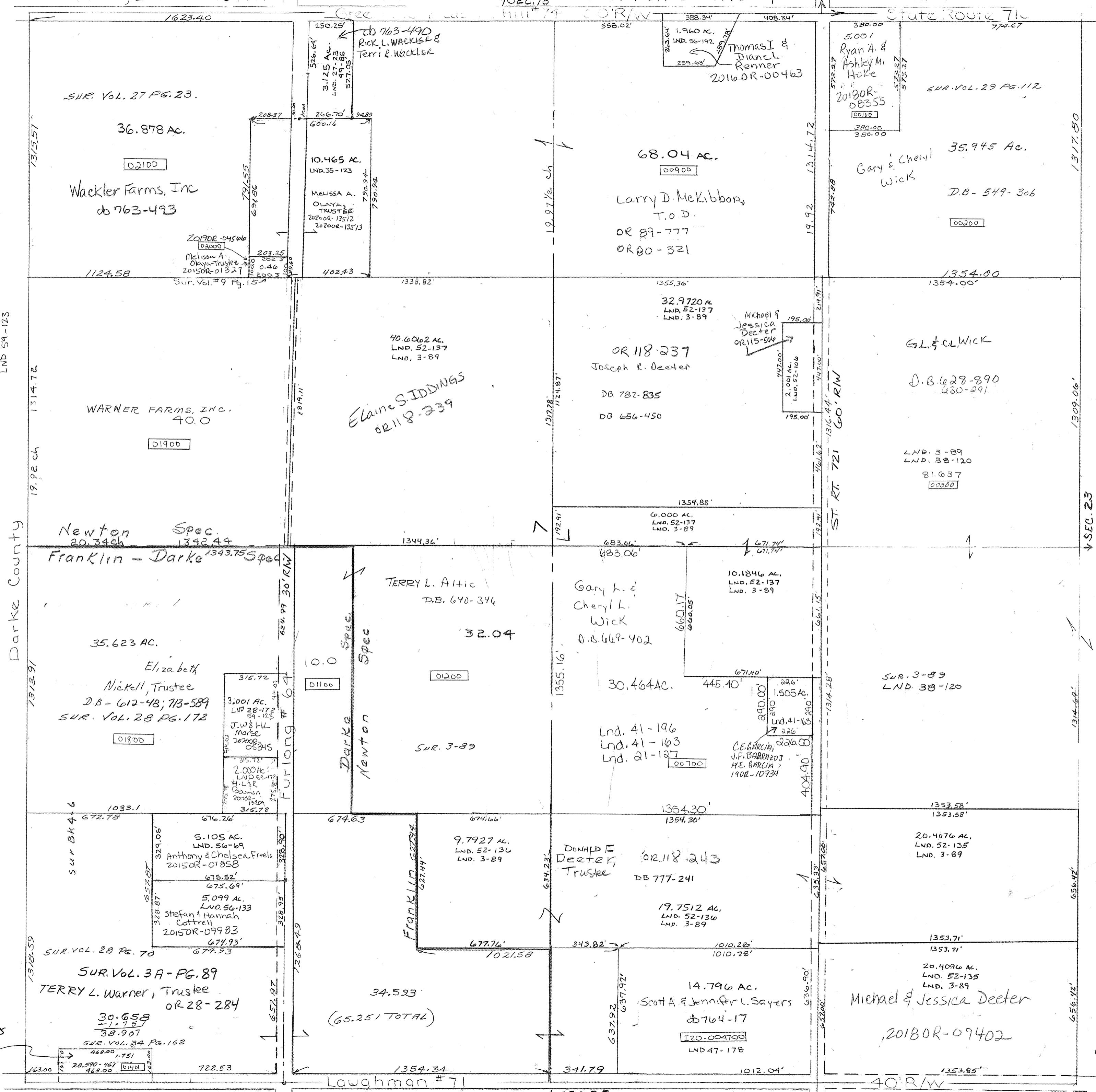


Lnd. 41-163 - NW Cor. SE QTR.  
 Lnd. 41-196 - NW Cor. SE QTR.  
 Lnd. 49-85 - Cen. Pt. NW QTR.  
 Lnd. 56-69 - SW Pt. SW QTR.  
 Lnd. 56-189 - NW Pt. NE QTR.  
 Lnd. 59-123

SURVYS +  
 Vol. 3 Pg. 89 Whole  
 Vol. 4 Pg. 6 - W PPT W 1/2  
 Vol. 9 Pg. 15 - Cen Pt NW  
 Vol. 38 Pg. 120 PARTS N.E. & S.E. QUARTERS  
 Vol. 47 Pg. 178 S Pt SE QUARTER



SMDA NUMBER



Robert O. +  
 Angela M. Koons  
 2022OR-11507